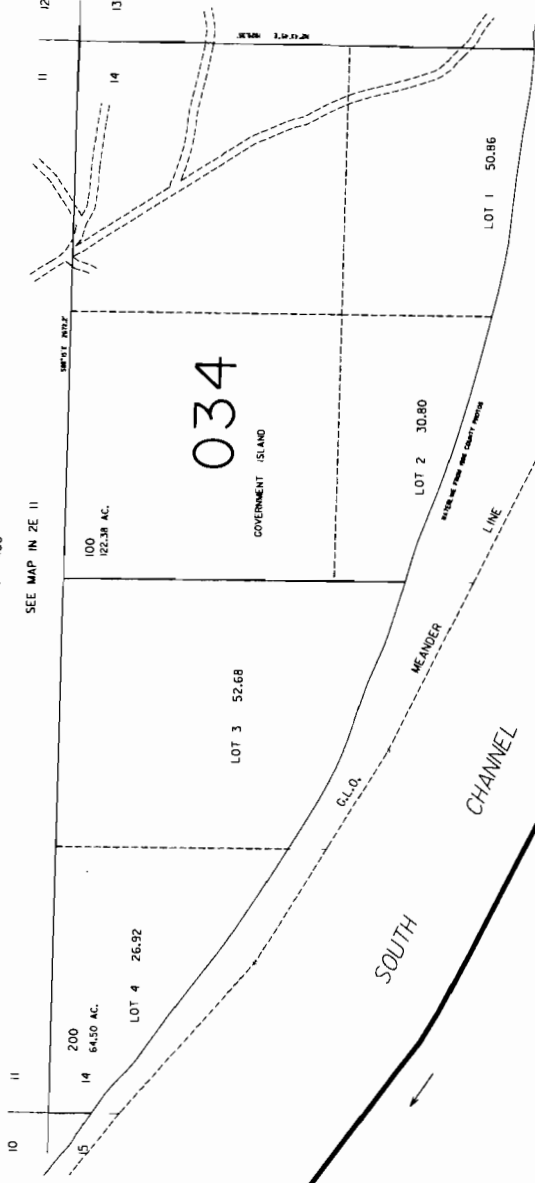


THIS MAP WAS PREPARED FOR ASSESSMENT PURPOSE ONLY

SECTION 14 T.1N. R.2E. W.M.  
MULTNOMAH COUNTY

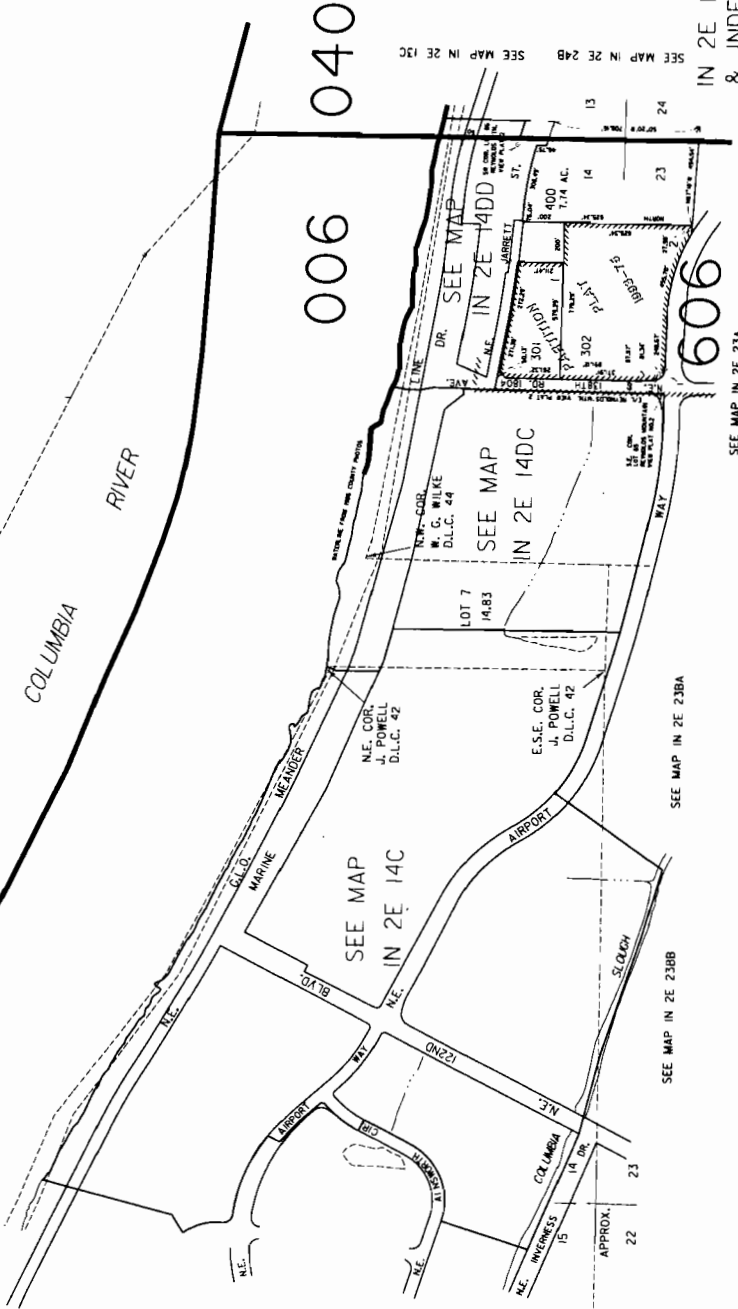
1" = 400'

IN 2E 14  
& INDEX  
PORTLAND



SEE MAP IN 2E 15

SEE MAP IN 2E 13



SEE MAP IN 2E 150

SEE MAP IN 2E 24B

SEE MAP IN 2E 238B

SEE MAP IN 2E 23A

IN 2E 14  
& INDEX  
PORTLAND

RECEIVED

MAR 03 2010

WATER RESOURCES DEPT  
SALEM, OREGON

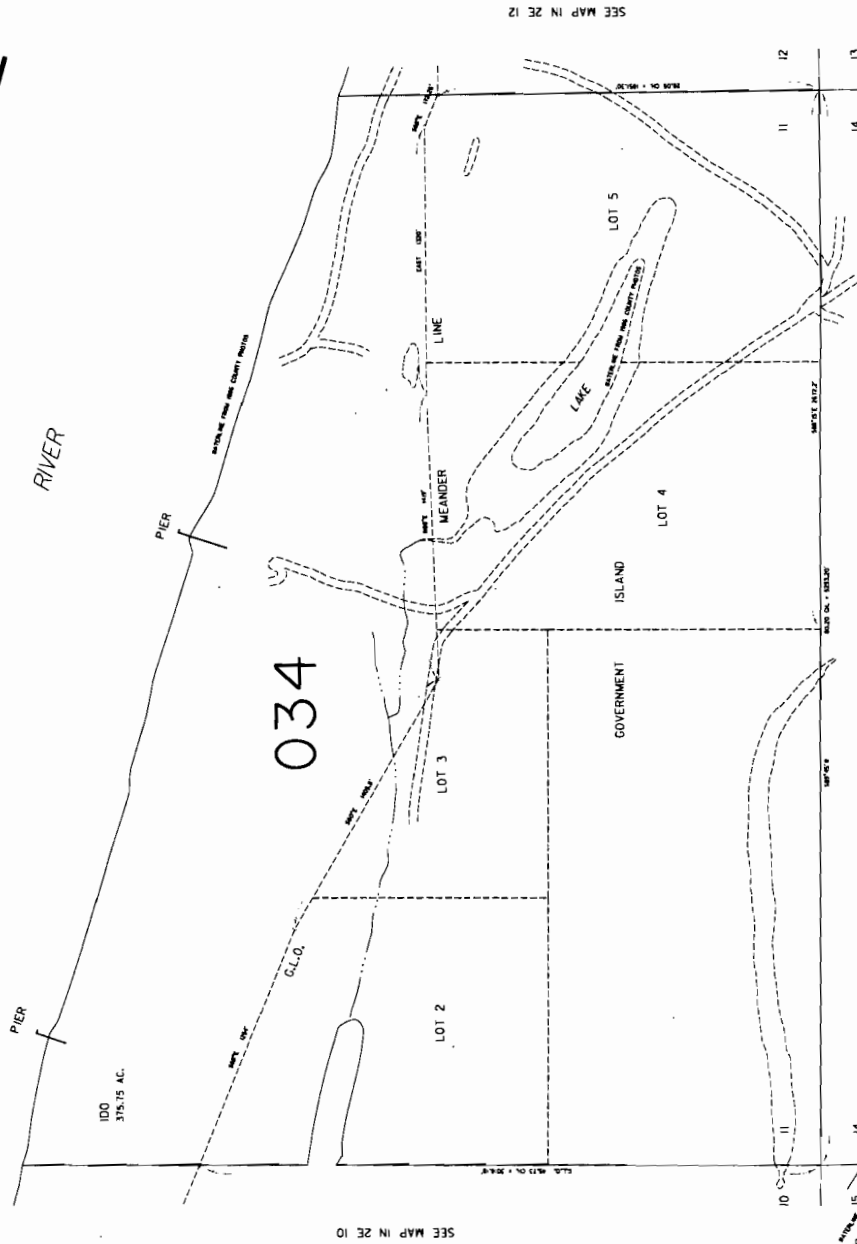
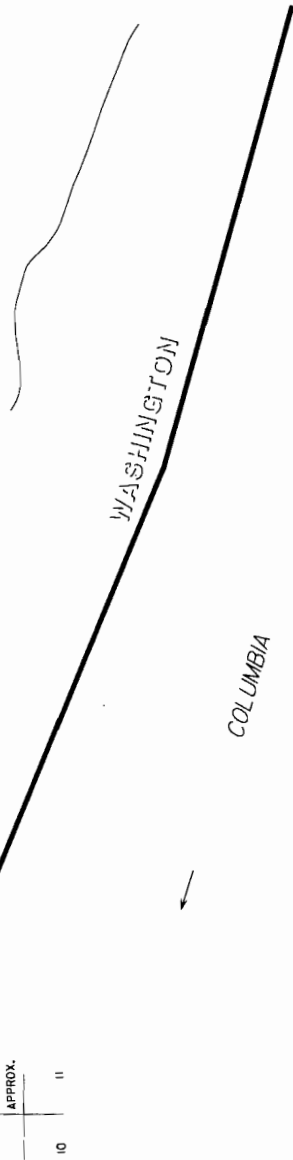


IN 2E 11  
PORTLAND

SECTION 11 T.1N. R.2E. W.M.  
MULTNOMAH COUNTY

1" = 400'

THIS MAP WAS PREPARED FOR  
ASSESSMENT PURPOSE ONLY



IN 2E 11  
PORTLAND

**RECEIVED**

MAR 03 2010

WATER RESOURCES DEPT  
SALEM, OREGON