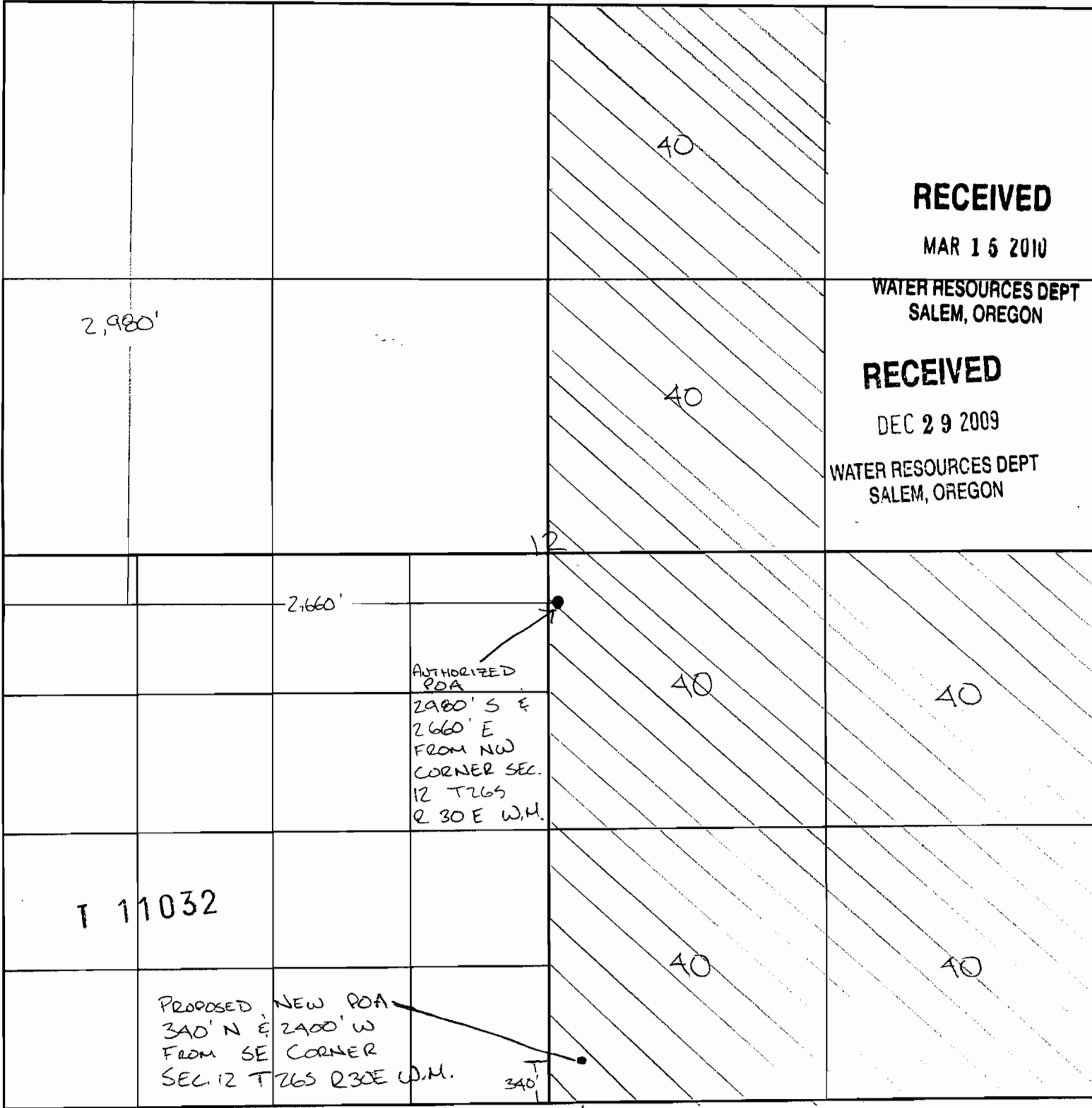


SECTION PLAT

Section 12 Township 26 S Range 30 E
County of HARNEY State of OR

NORTH



RECEIVED

MAR 15 2010

WATER RESOURCES DEPT
SALEM, OREGON

RECEIVED

DEC 29 2009

WATER RESOURCES DEPT
SALEM, OREGON

T 11032

PROPOSED NEW POA
340' N & 2400' W
FROM SE CORNER
SEC. 12 T26S R30E W.M.

(N 43° 19.491'
W 119° 04.075')

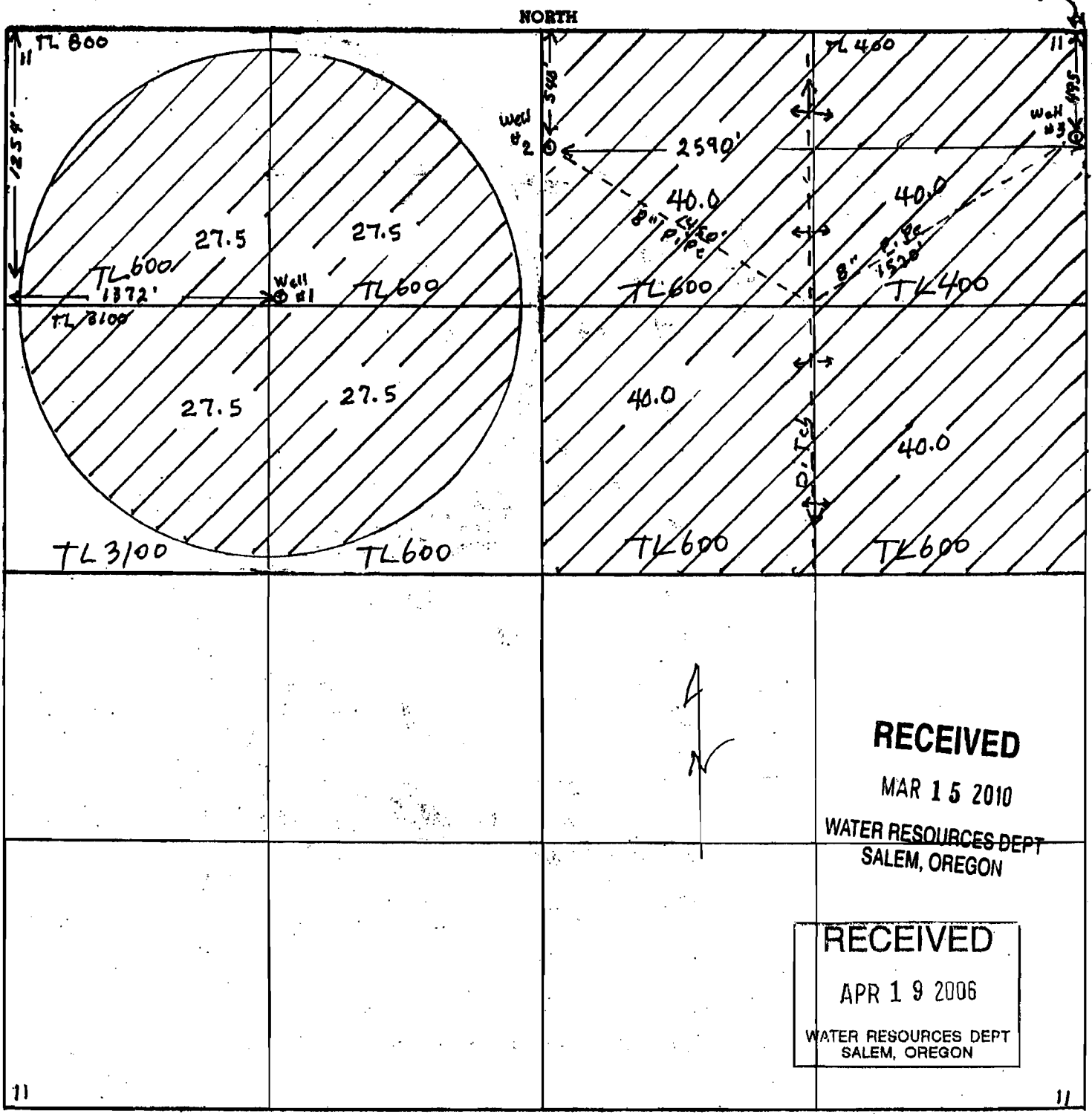
4" = 1/2 mile

2400'

WORK COPY

Section 11 Township 26-S Range 30-E

County of Harney State of O.R.



Remarks scale - 8" = 1 mile - 660' -

RECEIVED
 MAY 12 2006
 WATER RESOURCES DEPT
 SALEM, OREGON

RECEIVED
 DEC 18 2006
 WATER RESOURCES DEPT
 SALEM, OREGON

App 9-11668

Page 1 of 3

11052

SECTION FLA1

WORK COPY

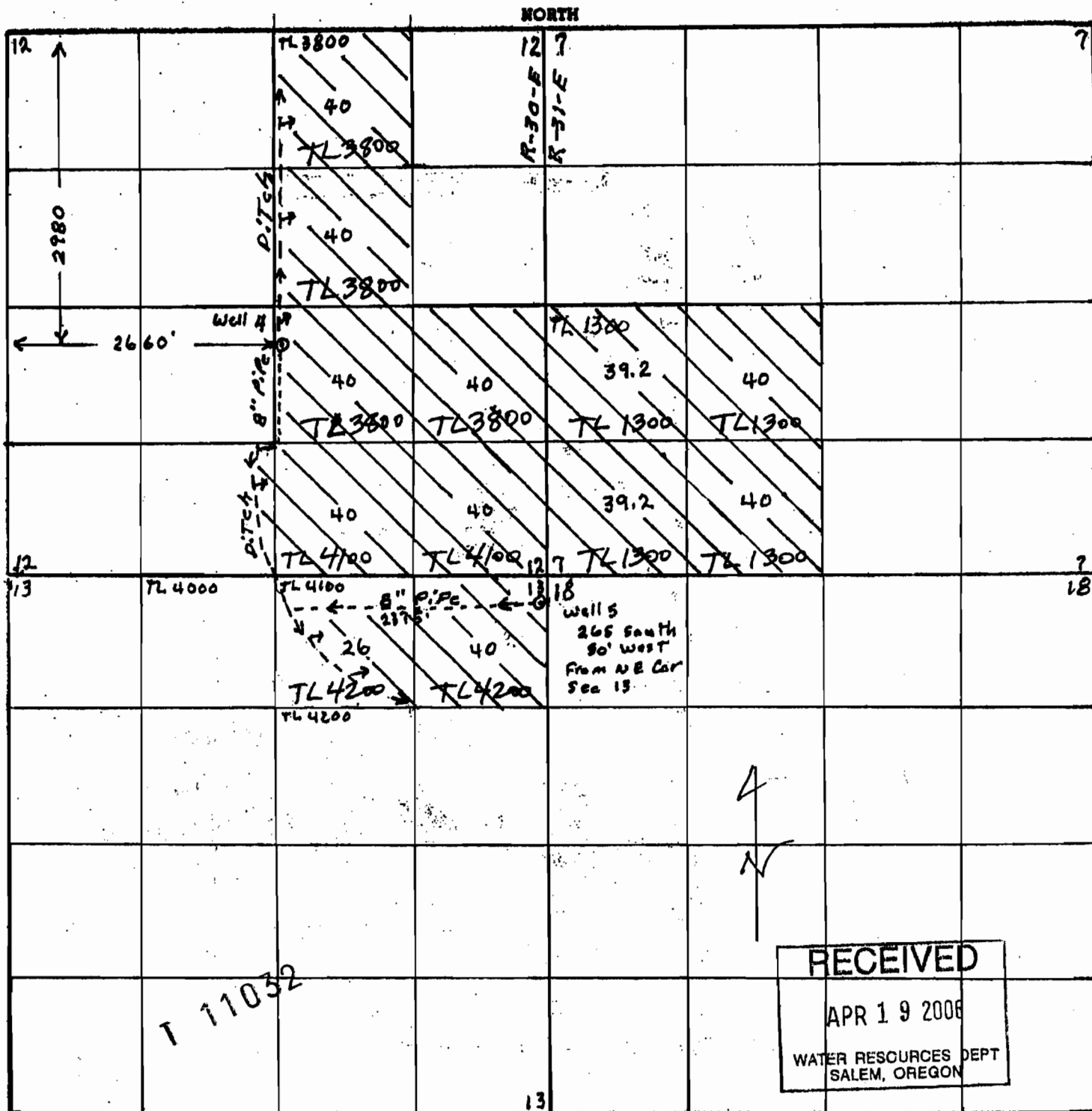
Section 12-13-7

Township 26-5

Range 30 & 31 E

County of Harney

State of OR



RECEIVED
 APR 19 2006
 WATER RESOURCES DEPT
 SALEM, OREGON

Remarks scale 1/4" = 1 mile - 660' -

RECEIVED
 MAY 12 2006
 WATER RESOURCES DEPT
 SALEM, OREGON

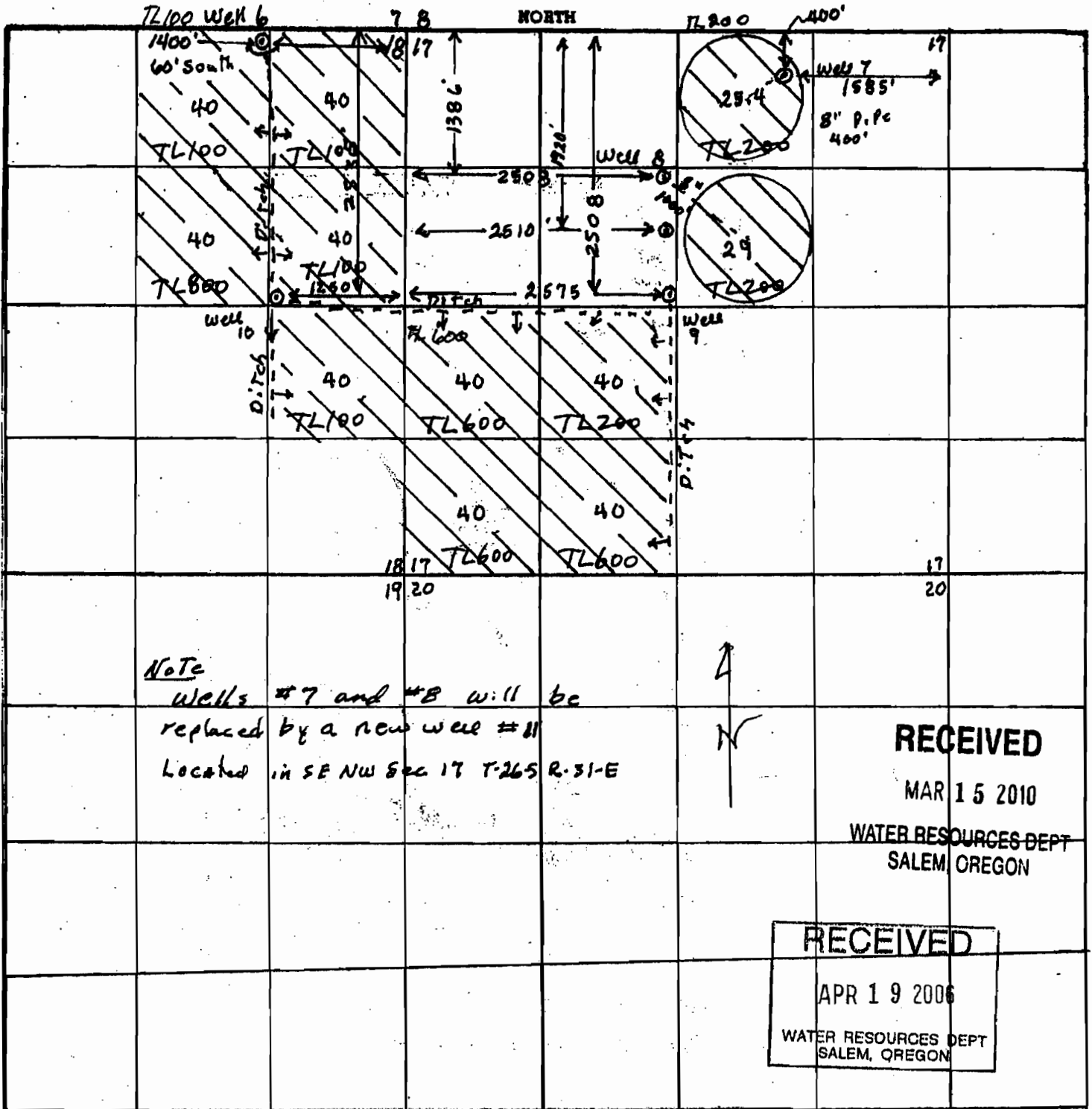
App G-16668

Page 2 of 3

WORK COPY

Section 17 & 18 Township 26-5 Range 31-E

County of Harney State of OR



Note
 Wells #7 and #8 will be
 replaced by a new well #11
 Located in SE NW Sec 17 T-26S R-31-E

RECEIVED

MAR 15 2010

WATER RESOURCES DEPT
SALEM, OREGON

RECEIVED

APR 19 2006

WATER RESOURCES DEPT
SALEM, OREGON

RECEIVED

DEC 18 2006

WATER RESOURCES DEPT
SALEM, OREGON

RECEIVED

MAY 12 2006

WATER RESOURCES DEPT
SALEM, OREGON

Remarks scale 4" = 1 mile (660')

T 11032

App G-16668

Page 3 of 3