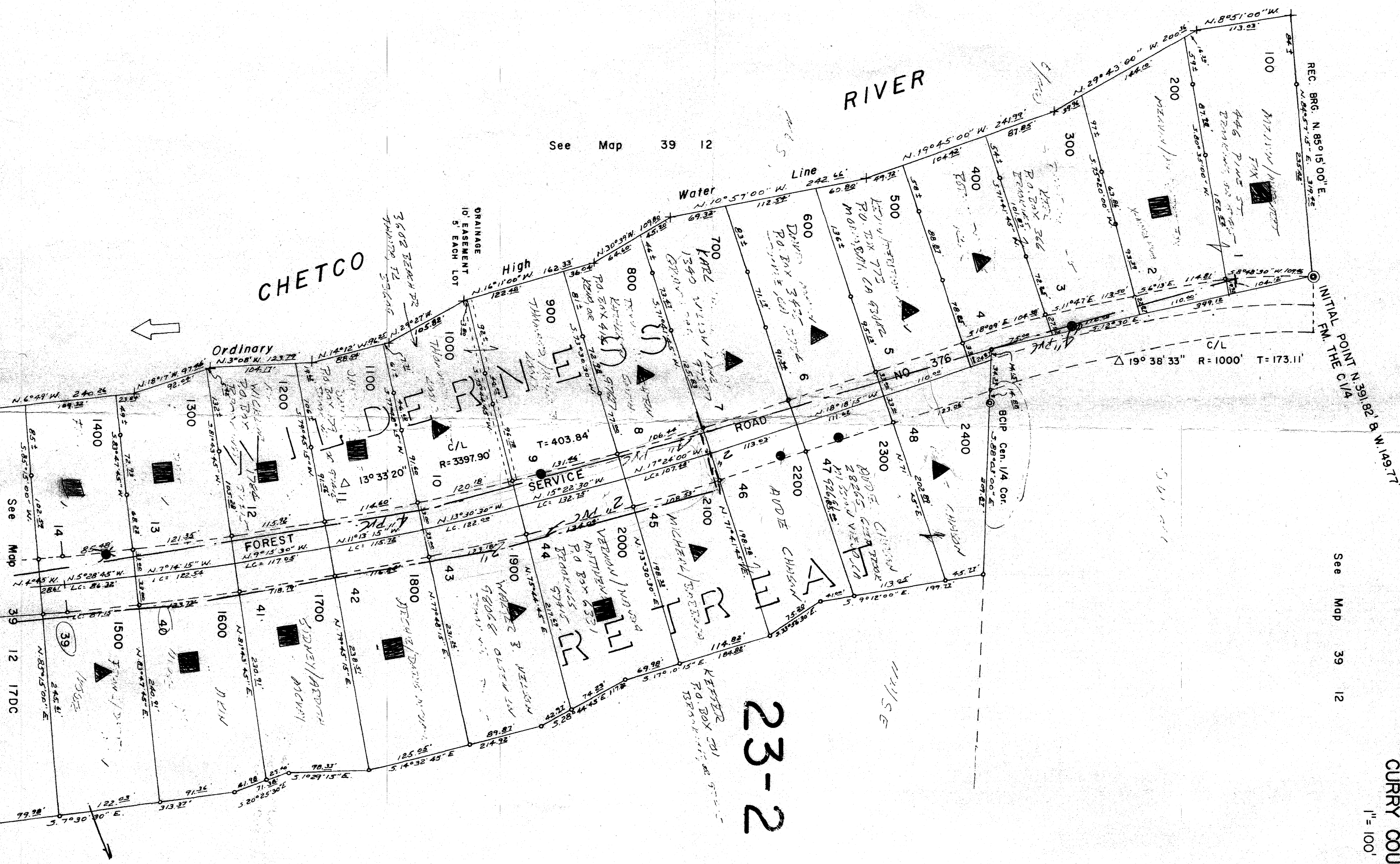


RIVER

See Map 39 12

CHETCO

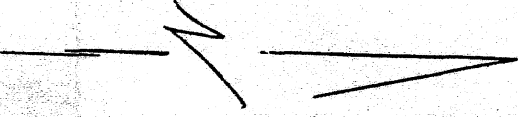


23-2

See Map 39 12

NW 1/4 SE 1/4 Sec. 17 T39S. R. 12W. WM.
CURRY COUNTY
1" = 100'

See Map 39 12



FINAL PROOF SURVEY UNDER

Application No. 47421
Permit No. 35534

IN NAME OF
ARCHIE MCVAY
FRANK AKIN

October 10, 1938 by B. S. JAMES
January 22, 1992 by B. S. JAMES
July 27, 1995 by B. S. JAMES
Nov 10, 2008 by B. S. JAMES
House by LHM

RV CONCRETE (HOUSE BIERB OUTLET DRIVE (2x12))
OUTLET UNDERGROUND

WILDERNESS RETREAT
PO BOX 1295
REDOLINE, OR 97445

39 12 17 DB

1995

39 12 17 DB

MAP 2 of 2