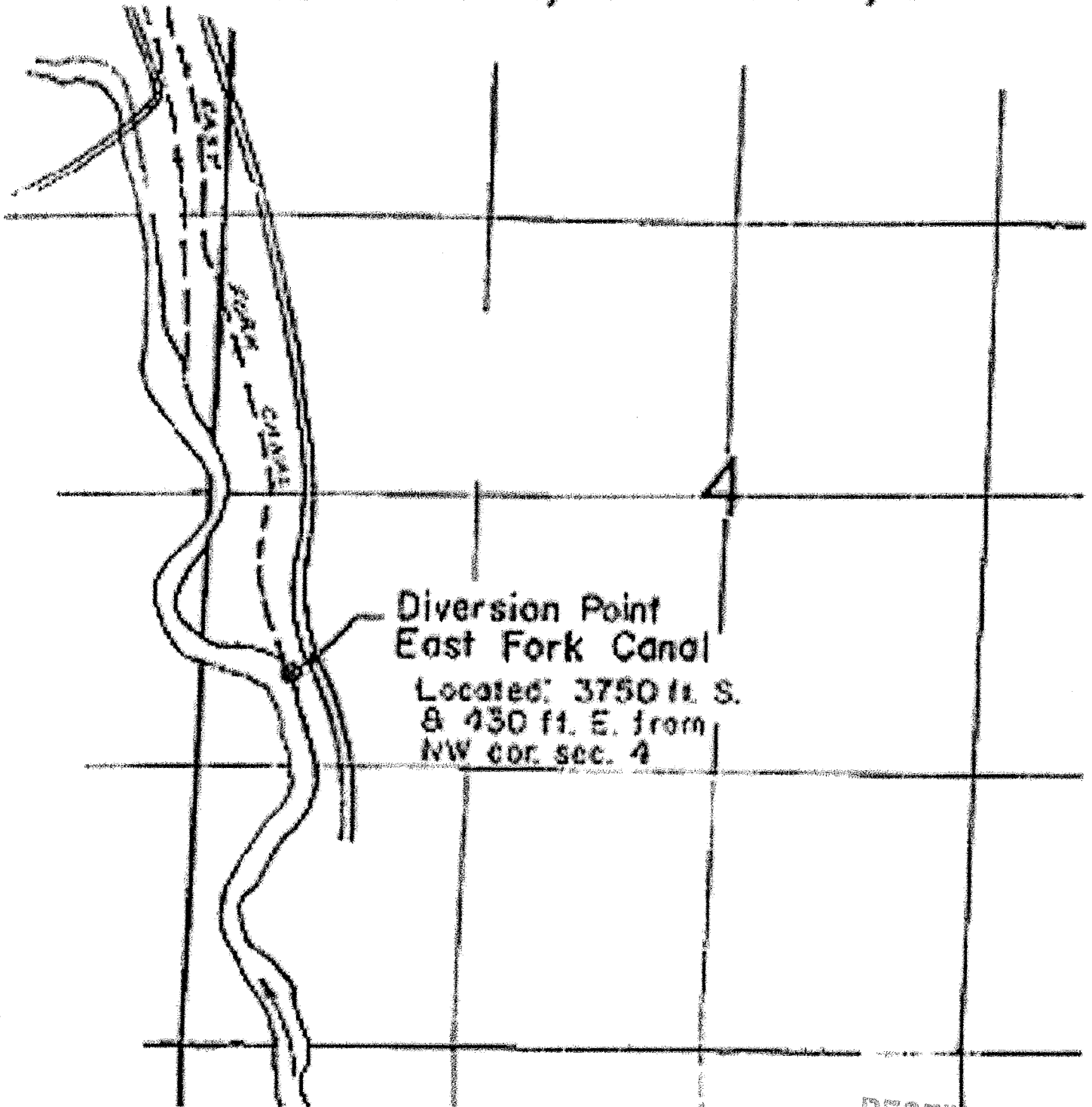


T. 1 South, R. 10 East, W.M.



Diversion Point
East Fork Canal

Located: 3750 ft. S.
& 430 ft. E. from
NW cor. sec. 4

RECEIVED

MAR 18 2010

WATER RESOURCES DEPT
SALEM, OREGON

East Fork Irrigation District POD

T 11036

102

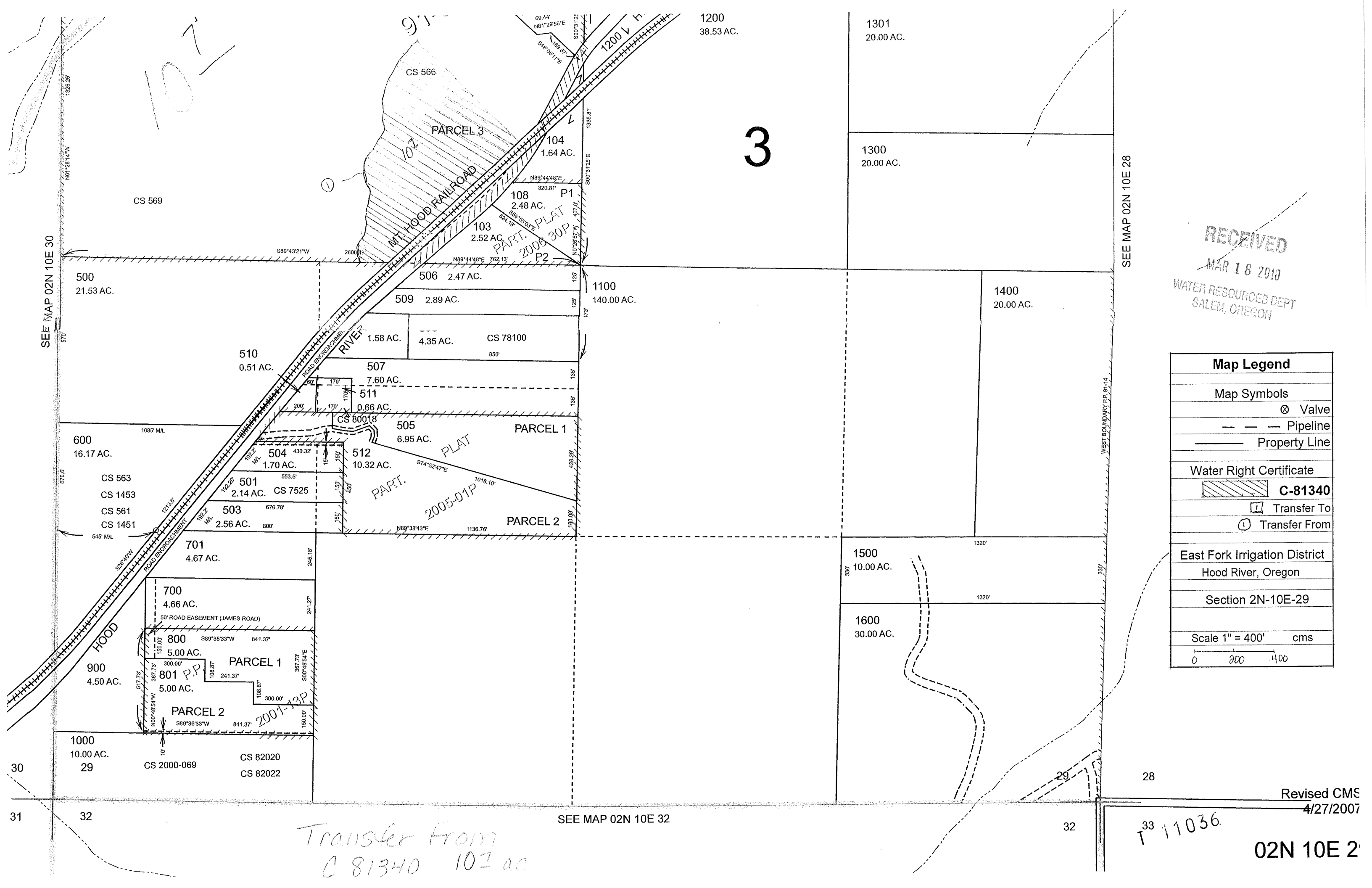
3

RECEIVED
MAR 18 2010
WATER RESOURCES DEPT
SALEM, OREGON

Map Legend	
Map Symbols	
	Valve
	Pipeline
	Property Line
Water Right Certificate	
	C-81340
	Transfer To
	Transfer From
East Fork Irrigation District Hood River, Oregon	
Section 2N-10E-29	
Scale 1" = 400' cms	
0 200 400	

Transfer From
C 81340 102 ac

Revised CMS
4/27/2007
02N 10E 2



SEE MAP 02N 10E 30

SEE MAP 02N 10E 28

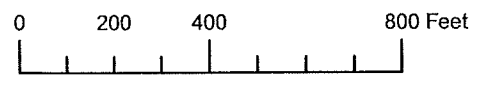
SEE MAP 02N 10E 32

33 11036

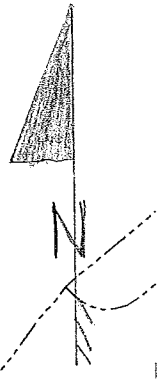
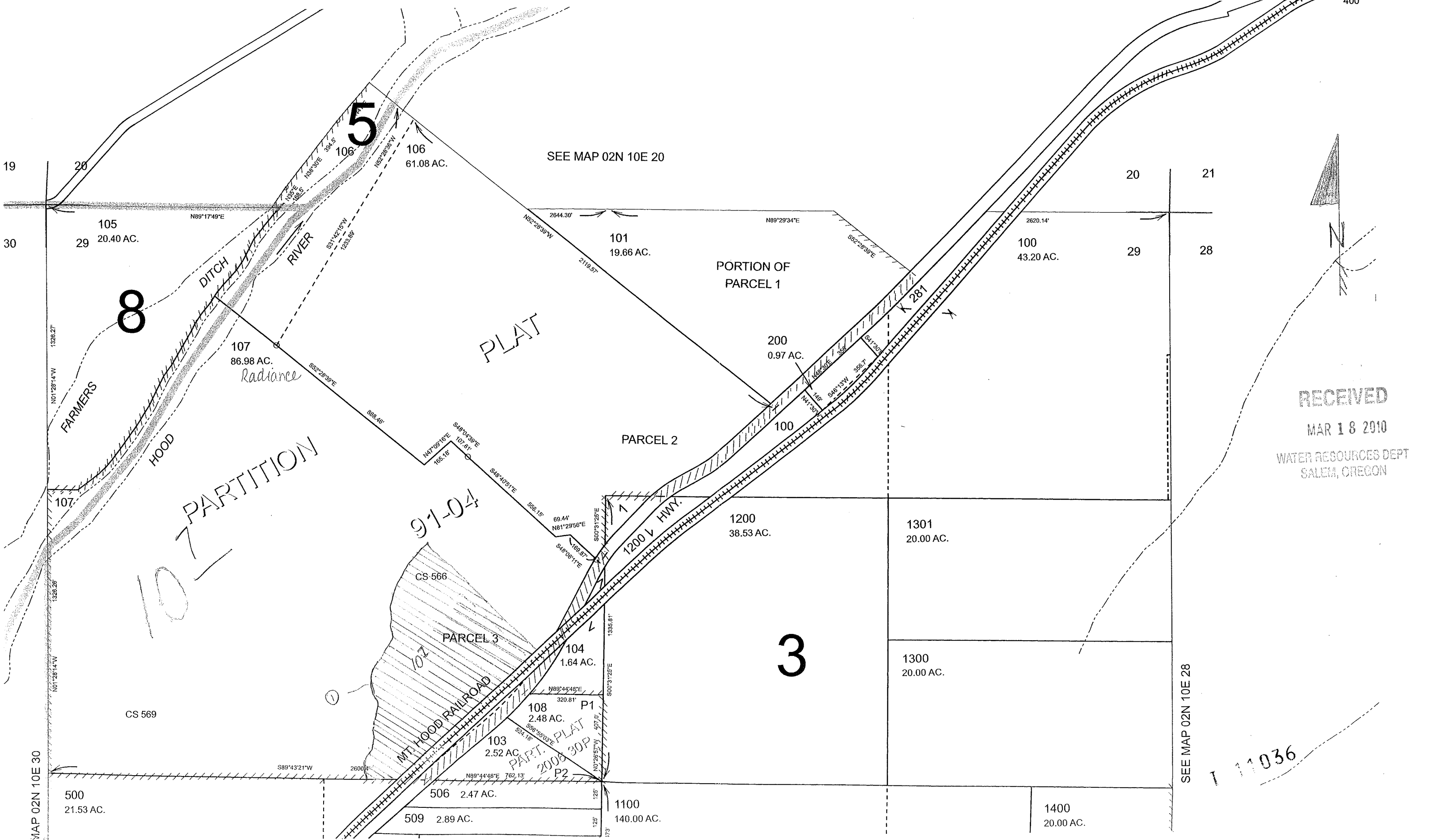
SECTION 29 T02N R10E WM
HOOD RIVER COUNTY

CANCELLED NOS.
102
300
400

RED FOR
SE ONLY



1" = 400'



RECEIVED
MAR 18 2010
WATER RESOURCES DEPT
SALEM, OREGON

SEE MAP 02N 10E 28

11036

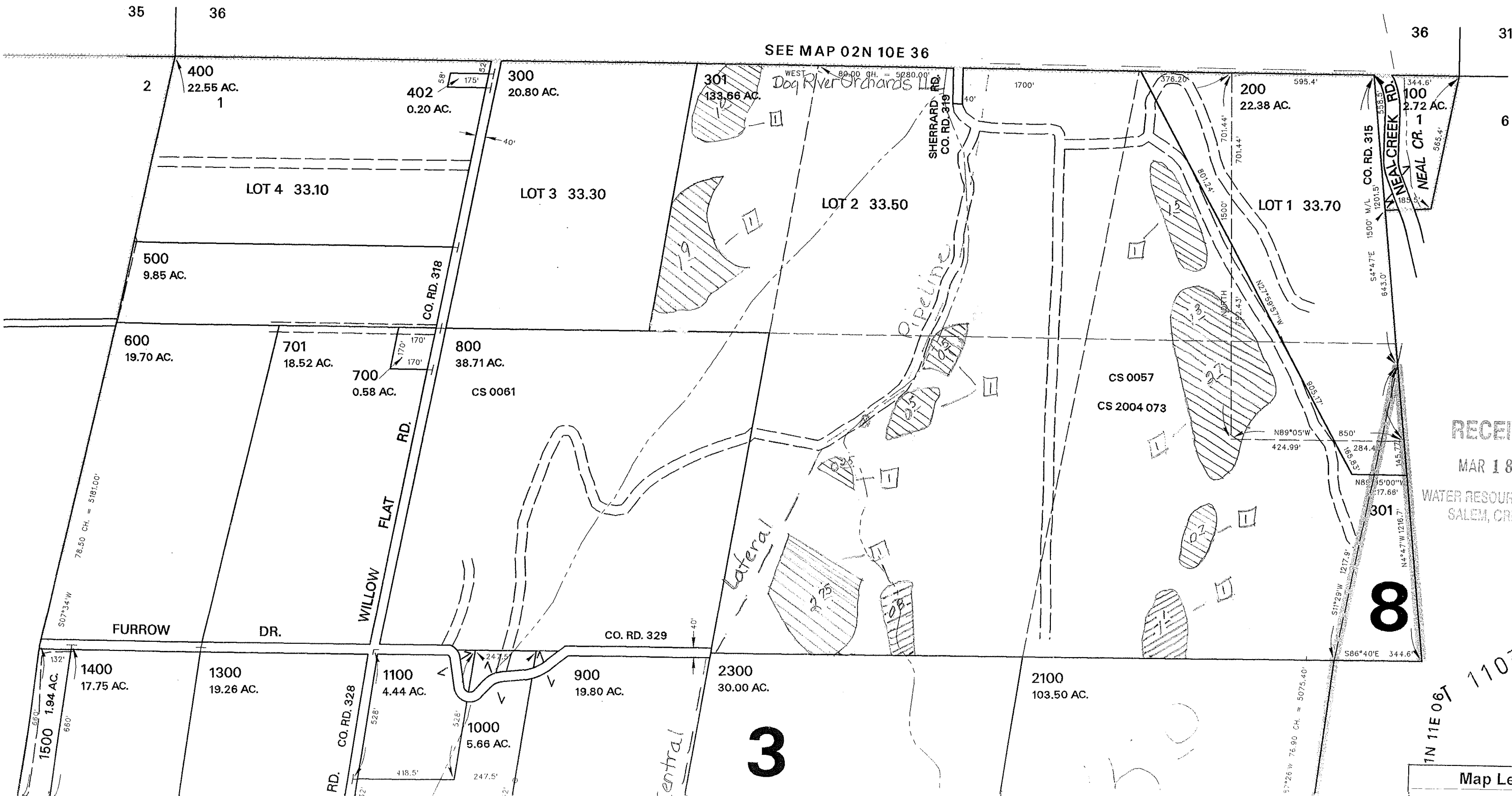
THIS MAP WAS PREPARED FOR
ASSESSMENT PURPOSE ONLY

SECTION 01 T.01N. R.10E. W.M. HOOD RIVER COUNTY

1" = 400'

01N 10E 0'

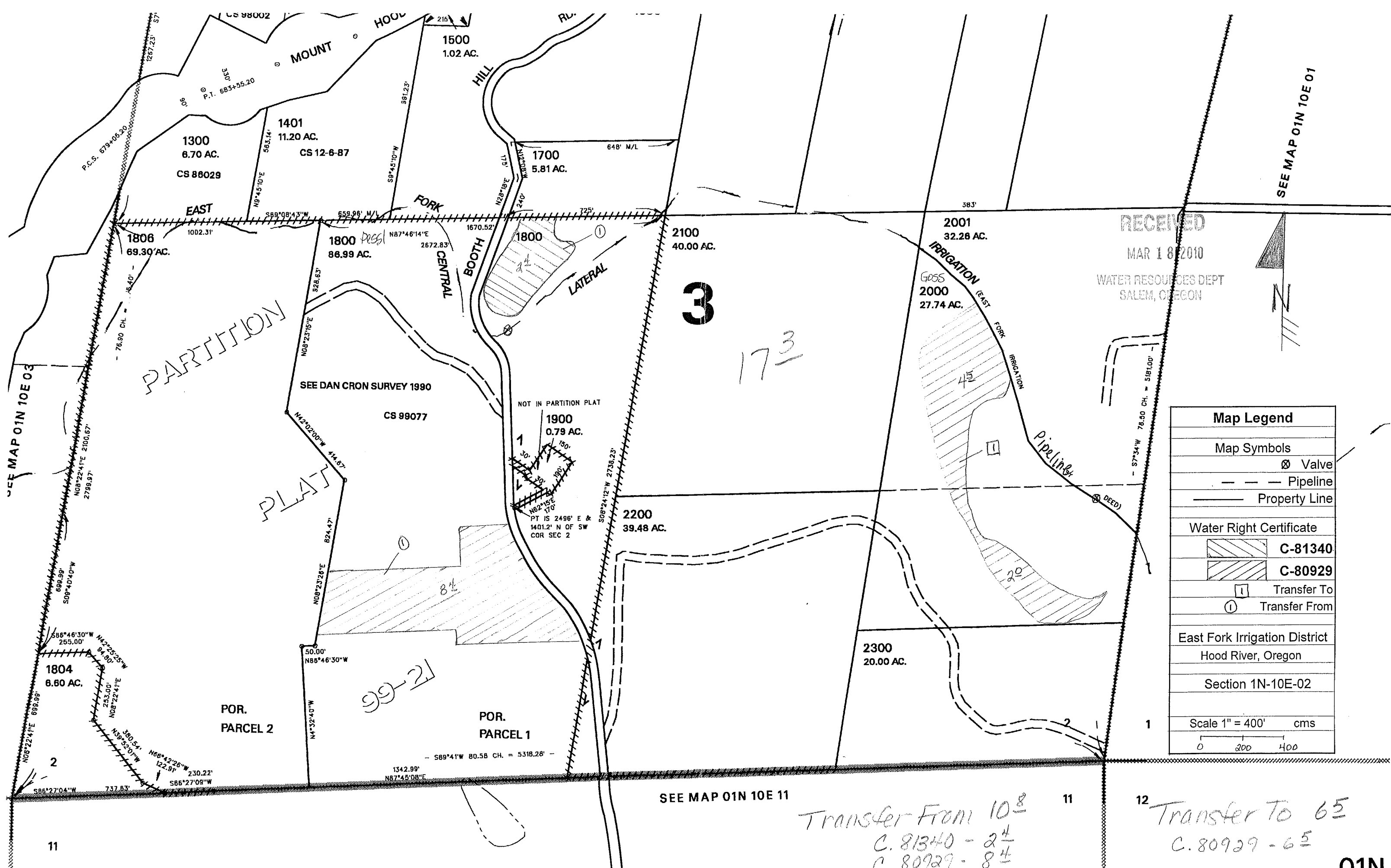
CANCELLED I
101
401
1200
2200
2501



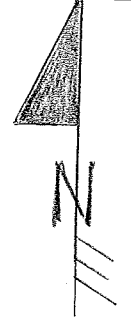
RECEIVED
MAR 18 2010
WATER RESOURCES DEPT
SALEM, OREGON

11N 11E 06T 11036

Map Legend



RECEIVED
 MAR 18 2010
 WATER RESOURCES DEPT
 SALEM, OREGON



Map Legend	
Map Symbols	
	Valve
	Pipeline
	Property Line
Water Right Certificate	
	C-81340
	C-80929
	Transfer To
	Transfer From
East Fork Irrigation District	
Hood River, Oregon	
Section 1N-10E-02	
Scale 1" = 400' cms	

Transfer From 10⁸
 C. 81340 - 2 1/2
 C. 80929 - 8 1/2

Transfer To 6⁵
 C. 80929 - 6 5

01N

T 11036

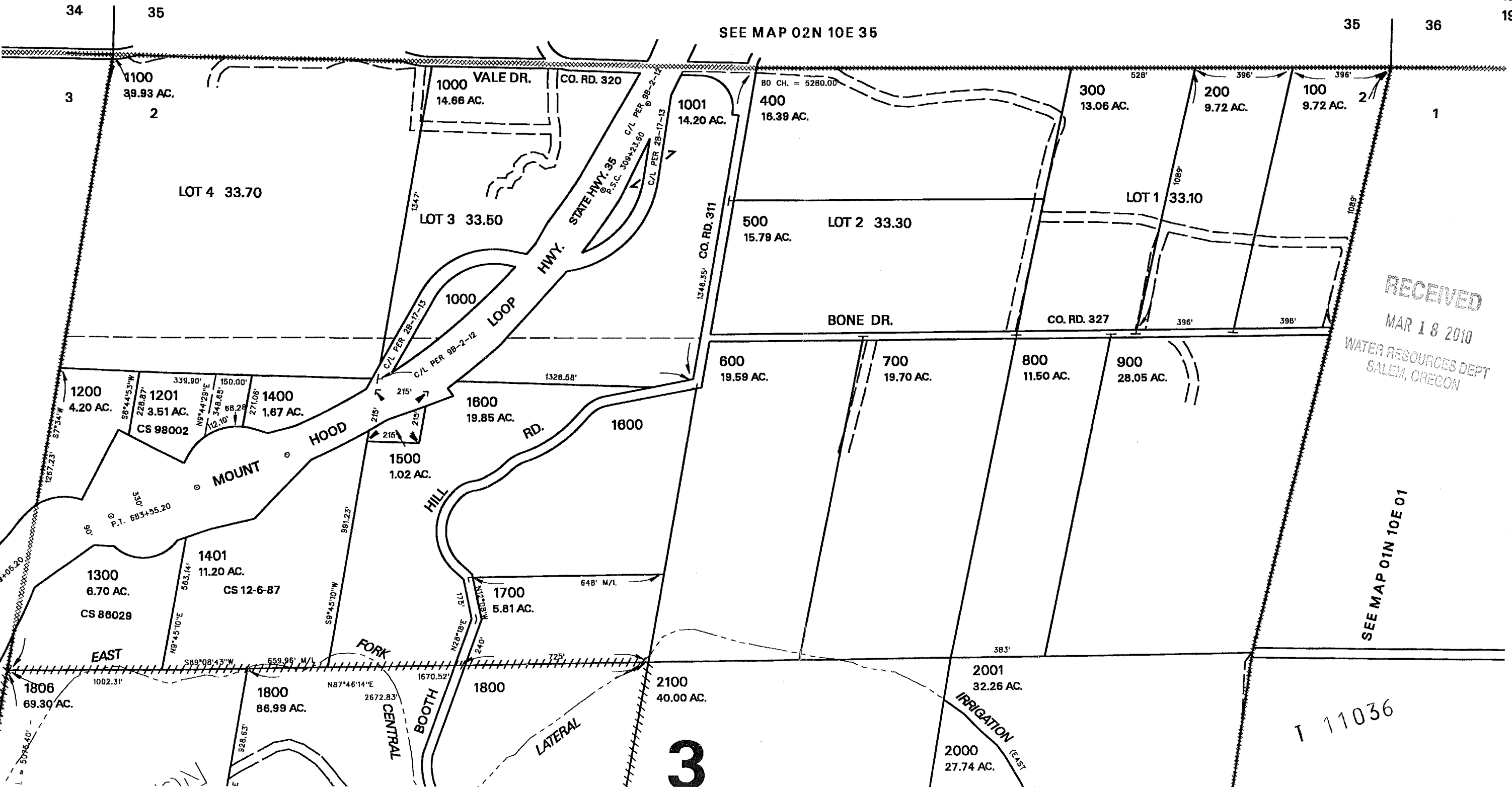
SECTION 02 T.01N. R.10E. W.M. HOOD RIVER COUNTY

1" = 400'

01N 10E 02

CANCELLED NO.
1402
1801
1802
1803
1805
1901

THIS MAP WAS PREPARED FOR
ASSESSMENT PURPOSE ONLY



RECEIVED
MAR 18 2010
WATER RESOURCES DEPT
SALEM, OREGON

SEE MAP 01N 10E 01

T 11036

3