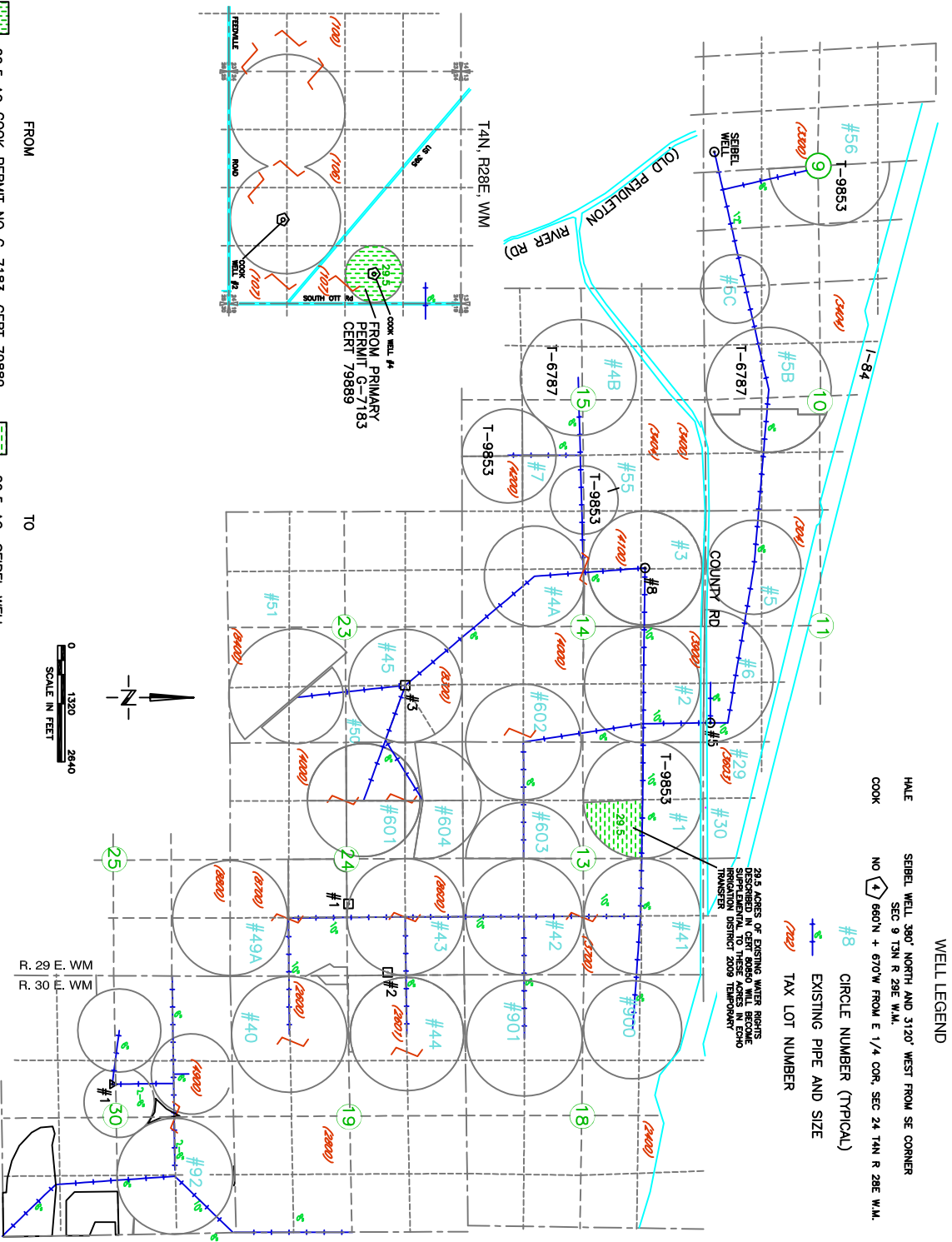


2010 ECHO IRRIGATION DISTRICT - COOK TO HALE PRIVATE INDIVIDUAL TEMPORARY TRANSFER T3N, R29E, WM



WELL LEGEND

HALE SEIBEL WELL 360' NORTH AND 3120' WEST FROM SE CORNER SEC 9 T3N R 29E WM.

COOK NO 4 860'N + 670'W FROM E 1/4 COR, SEC 24 T4N R 28E WM.

#8 CIRCLE NUMBER (TYPICAL)

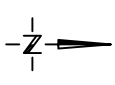
EXISTING PIPE AND SIZE

TAX LOT NUMBER

29.5 ACRES OF EXISTING WATER RIGHTS ARE BEING SUPPLEMENTED FOR THESE ACRES BY ECHO IRRIGATION DISTRICT 2009 TEMPORARY TRANSFER

FROM 29.5 AC COOK PERMIT NO G-7183, CERT 79889

TO 29.5 AC SEIBEL WELL



R. 29 E. WM
T. 3 N. U.T.
R. 30 W. WM

REVISION: 11/20/2010 - 1/2" Scale Sheet - Summary/Key - See Appendix (Sheet 31) for details.
DRAWN BY: [Name] ON: 07/27/10 CHECK BY: [Name]