

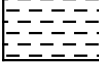
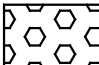
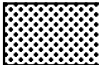
WESTLAND IRRIGATION DISTRICT

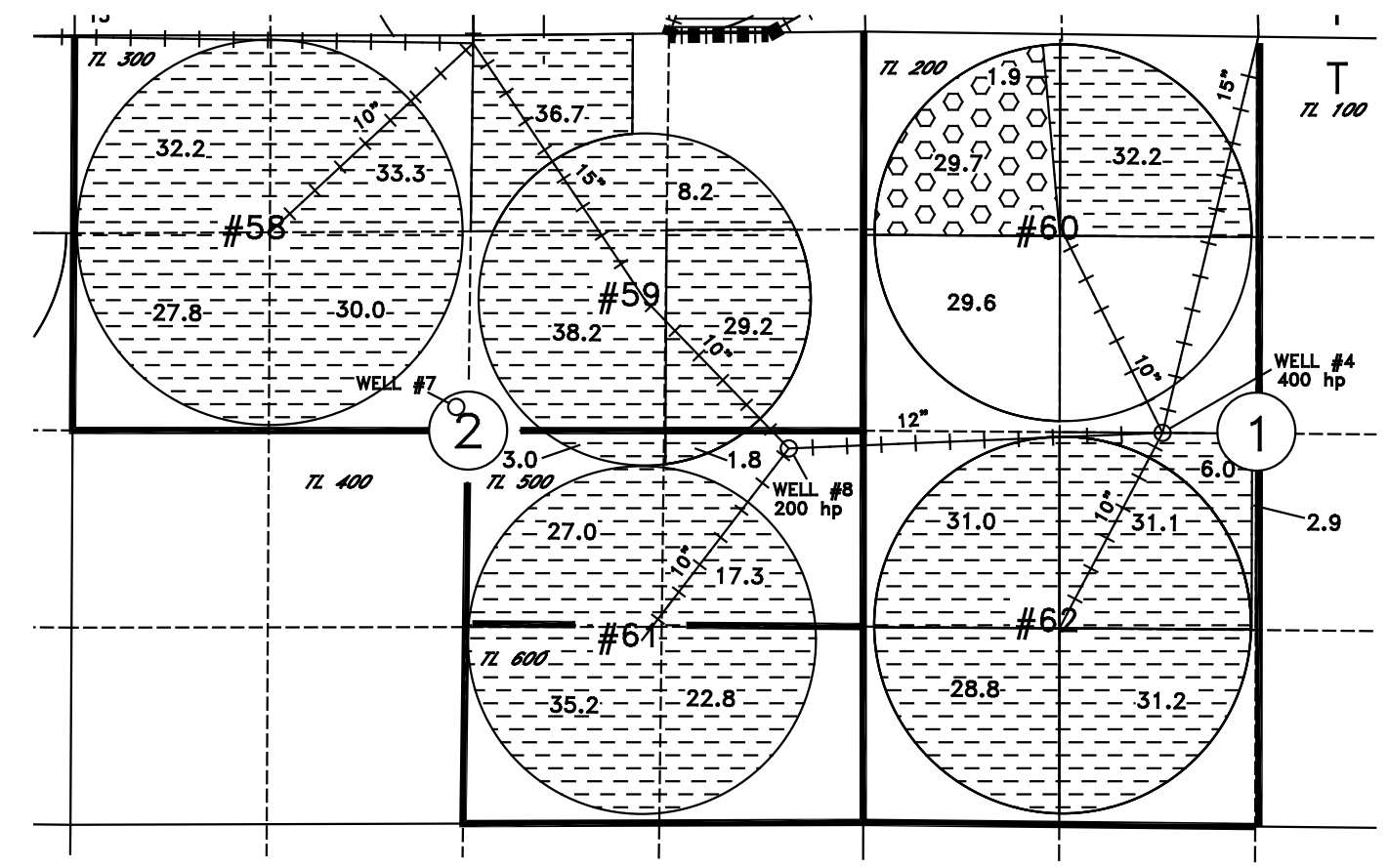
2010 TEMPORARY TRANSFER

PRIOR-PRIOR - page 1 of 2

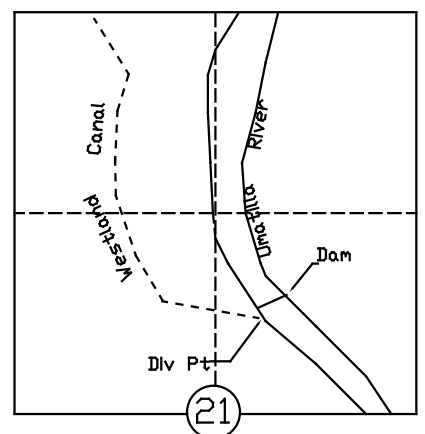
FROM GROUND 2N 28E

T 2N, R 28E

-  From: 504.9 acres primary cert. 76050, supplementals 75127 & 81815. Primary 76050 on from ground diminished to supplemental for 2010 season.
-  29.7 acres of certificates 76050, 75127 & 81815 in NW NW of section 1, not involved with this transfer.
-  2.9 acres of certificate 75127 in NE SW of section 1, not involved with this transfer.



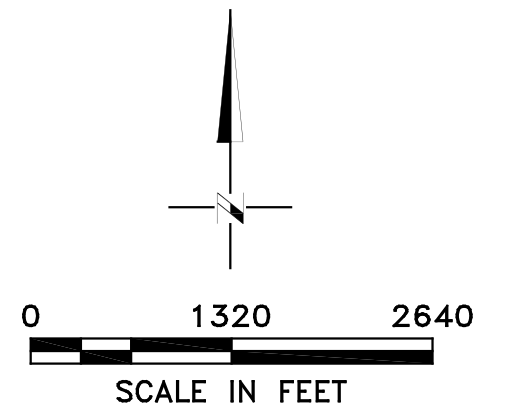
T3N, R 29E., W.M.



AUTHORIZED WELLS FOR CERTIFICATE 75127 ARE LOCATED AS FOLLOWS:
 WELL 4 - 2640 ft. S. & 630 ft. W. from NW 1/4 corner section 1, 2N 28E
 *WELL 7 - 2500 ft. S. & 2580 ft. E. from NW corner section 2, 2N 28E
 WELL 8 - 2800 ft. S. & 500 ft. W. from NE corner section 2, 2N 28E

* As in 2009 temporary transfer T-10844, 2008 temporary transfer T-10597 and 2007 temporary transfer T-10359, the point of appropriation for Well #7 will be temporarily changed to Wells #4 & #8 for the 2010 Irrigation season to allow the amount of water authorized under Certificate 75127 for Well #7 (1.8 cfs) to be used in any combination from Wells #4 and #8 at the proposed place of use.

AUTHORIZED P.O.D., FOR CERTIFICATES 76050, 76717, 76715, 76799, 76723, 81815
 DIV PT LCT N. 76°45'56"E. 2913.19' FROM W. 1/4 COR. SEC 21



NOTE: THE PURPOSE OF THIS MAP IS TO IDENTIFY THE APPROXIMATE LOCATION OF THE WATER RIGHT. IT IS NOT INTENDED TO PROVIDE INFORMATION RELATIVE TO THE LOCATION OF PROPERTY OWNERSHIP BOUNDARY LINES.