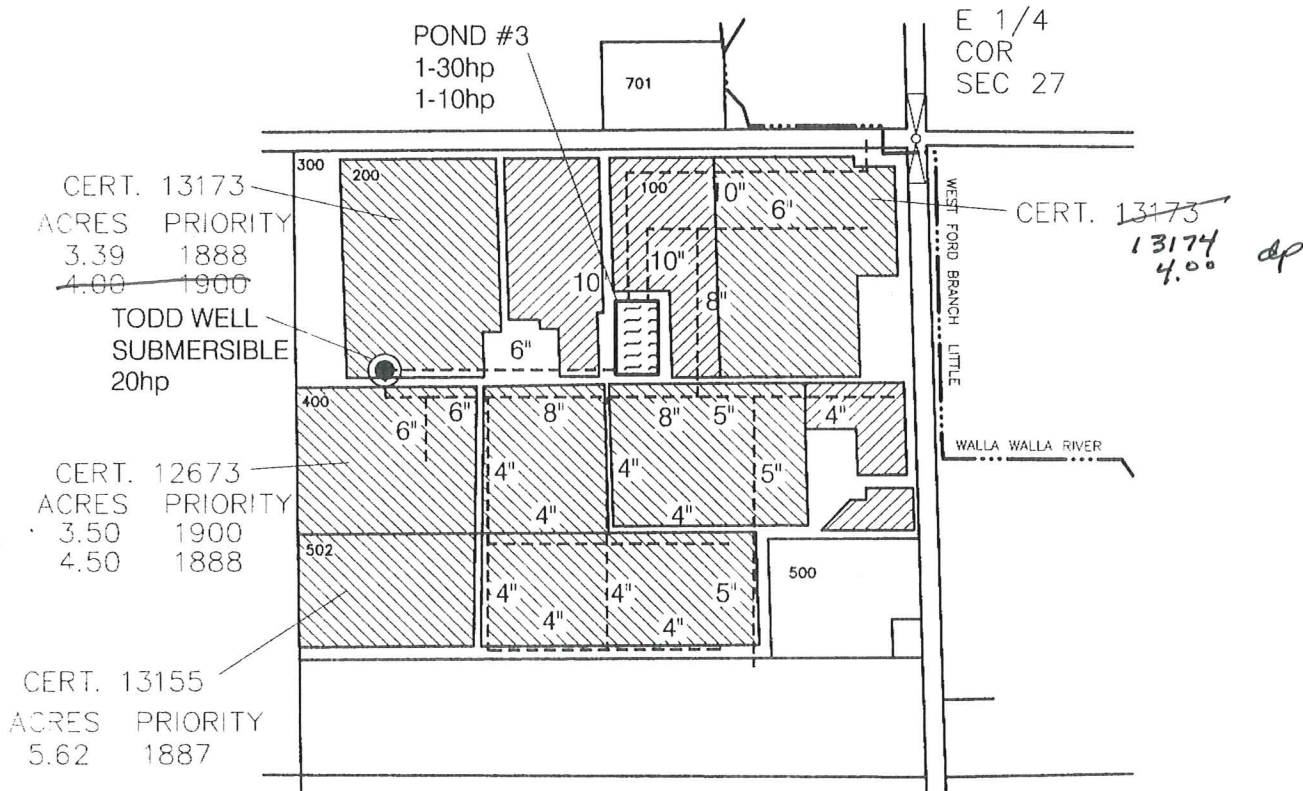


APPLICATION FOR ALLOCATION AND USE OF CONSERVED WATER

for

CW-14

TODD AND ALAN DAVIS NE 1/4, SE 1/4 SEC 27 T 6N, R 35 E. WM



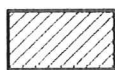
CERT. 13173
ACRES PRIORITY
3.39 1888
~~4.00 1900~~

TODD WELL
SUBMERSIBLE
20hp

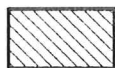
CERT. 12673
ACRES PRIORITY
3.50 1900
4.50 1888

CERT. 13155
ACRES PRIORITY
5.62 1887

CERT. 13173
13174
4.00 dp



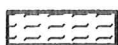
3.9Ac CONSERVED WATER TO BE APPLIED HERE



22.1Ac AREAS CONSERVATION WILL TAKE PLACE

709

TAX LOT NUMBER (TYP)



POND (TYP)

RECEIVED

FEB 05 2001

WATER RESOURCES DEPT.
SALEM, OREGON



0 400 800



SCALE IN FEET

01/08/01
35221ADAVR.DWG
3522 121