

Rodighiero

NOT Irrigated .72 Acres

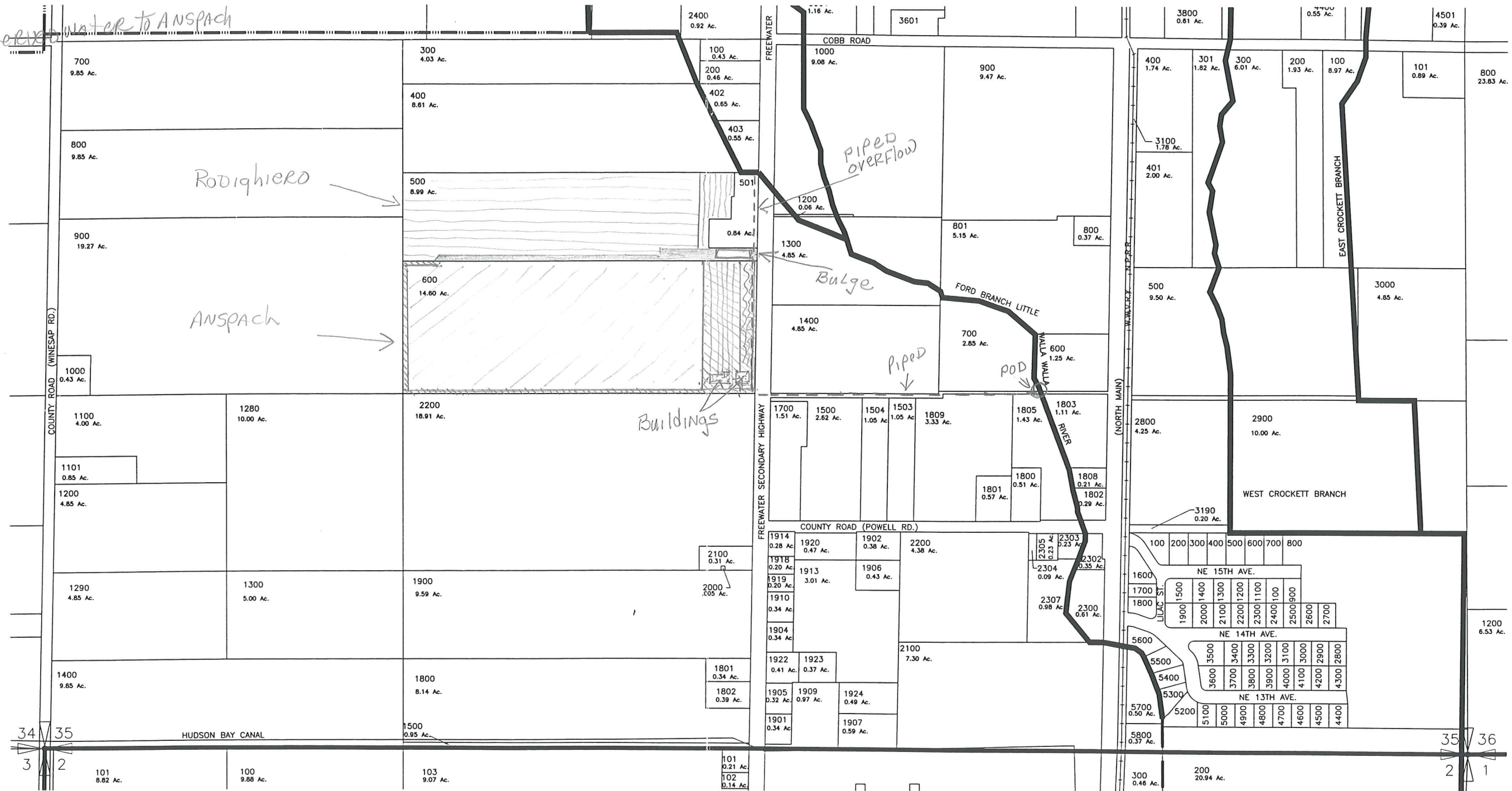
Water Right cert. 12889, 1891, 8 Acres

.27 Acre conserved water

.70 Acre conserved water

SOUTH 1/2 SECTION 35 TOWNSHIP 6 NORTH, RANGE 35 EAST, W.M.

CW-15



ANSPACH

- Water Right cert. 12519, 2.48 Acres Oct thru Jun (BACK TO STATE)

- Water Right cert. 12518, 10 Acres, 1875; 12519 cert, 1 Acre 1891; and 12519 cert, 1 Acre 1901 Year Round

- Conserved water from 12 Acre water rights (17.5 GPM) Year Round

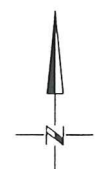
.70 Acre conserved water From Rodighiero cert 12889, 1891

PIPED - - - - -

RECEIVED

APR 02 2001

WATER RESOURCES DEPT
SALEM, OREGON



DWG 35S

WALLA WALLA RIVER IRRIGATION DISTRICT

SCM Consultants, Inc. Architects & Engineers
Kennewick, WA 99336

4376.015

4376-35S.DWG

11/29/00