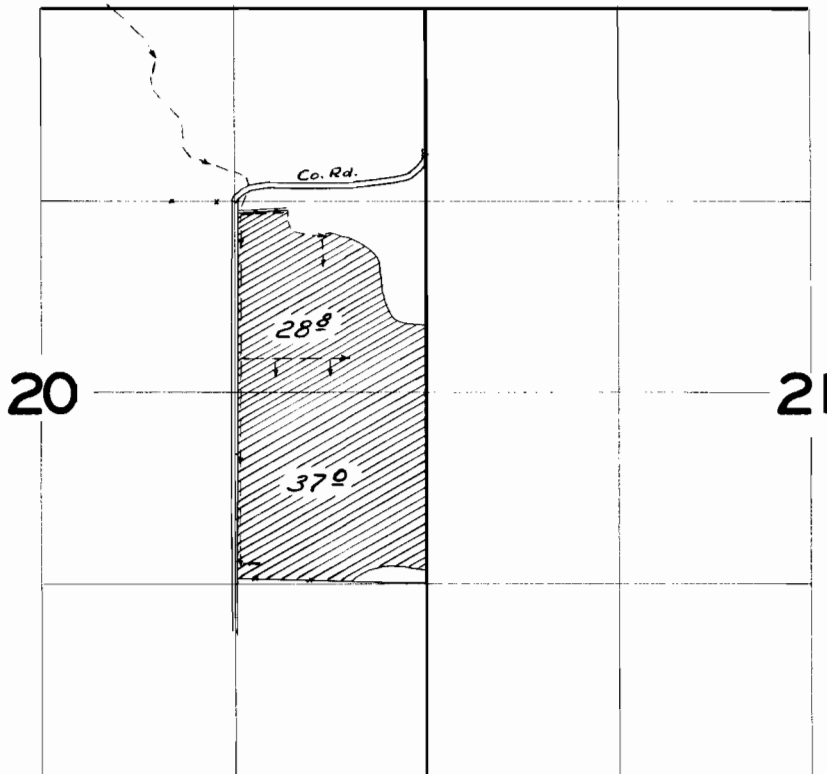


# T.5 S.R.12 E.W.M.

Lateral from Mainline  
1/2" Dist. Canal  
NE 1/4 Sec. 17



## FINAL PROOF SURVEY UNDER

Transfer No. *A-26*

Application No. .... Permit No. ....  
IN NAME OF

*RAYMOND CRABTREE*

Surveyed *Nov. 17* 19*59*, by *M. Bish*