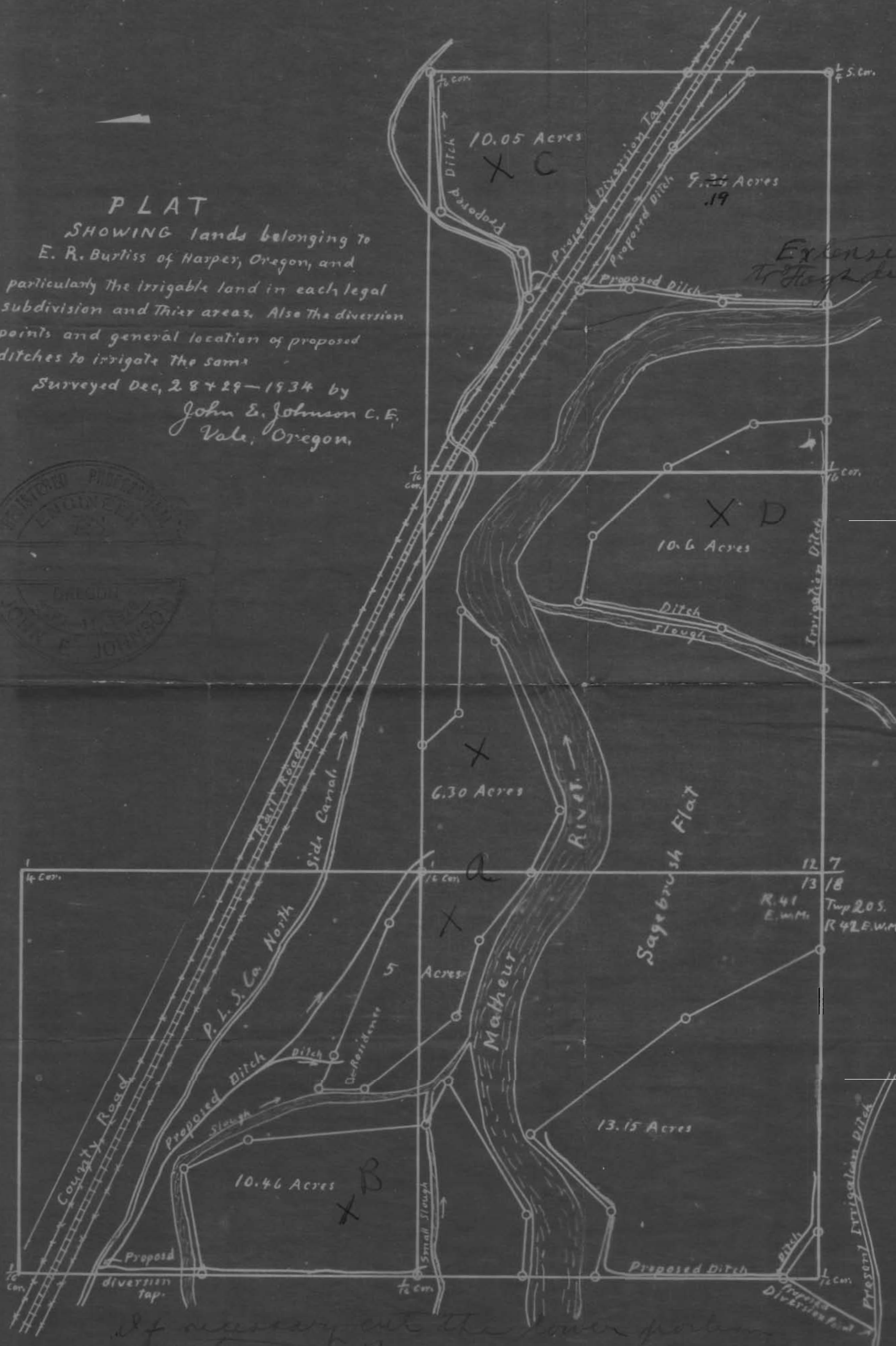


PLAT

SHOWING lands belonging to E. R. Burliss of Harper, Oregon, and particularly the irrigable land in each legal subdivision and their areas. Also the diversion points and general location of proposed ditches to irrigate the same

Surveyed Dec, 28 & 29 - 1934 by John E. Johnson C.E. Vale, Oregon.



If necessary cut the river portion to meet X B