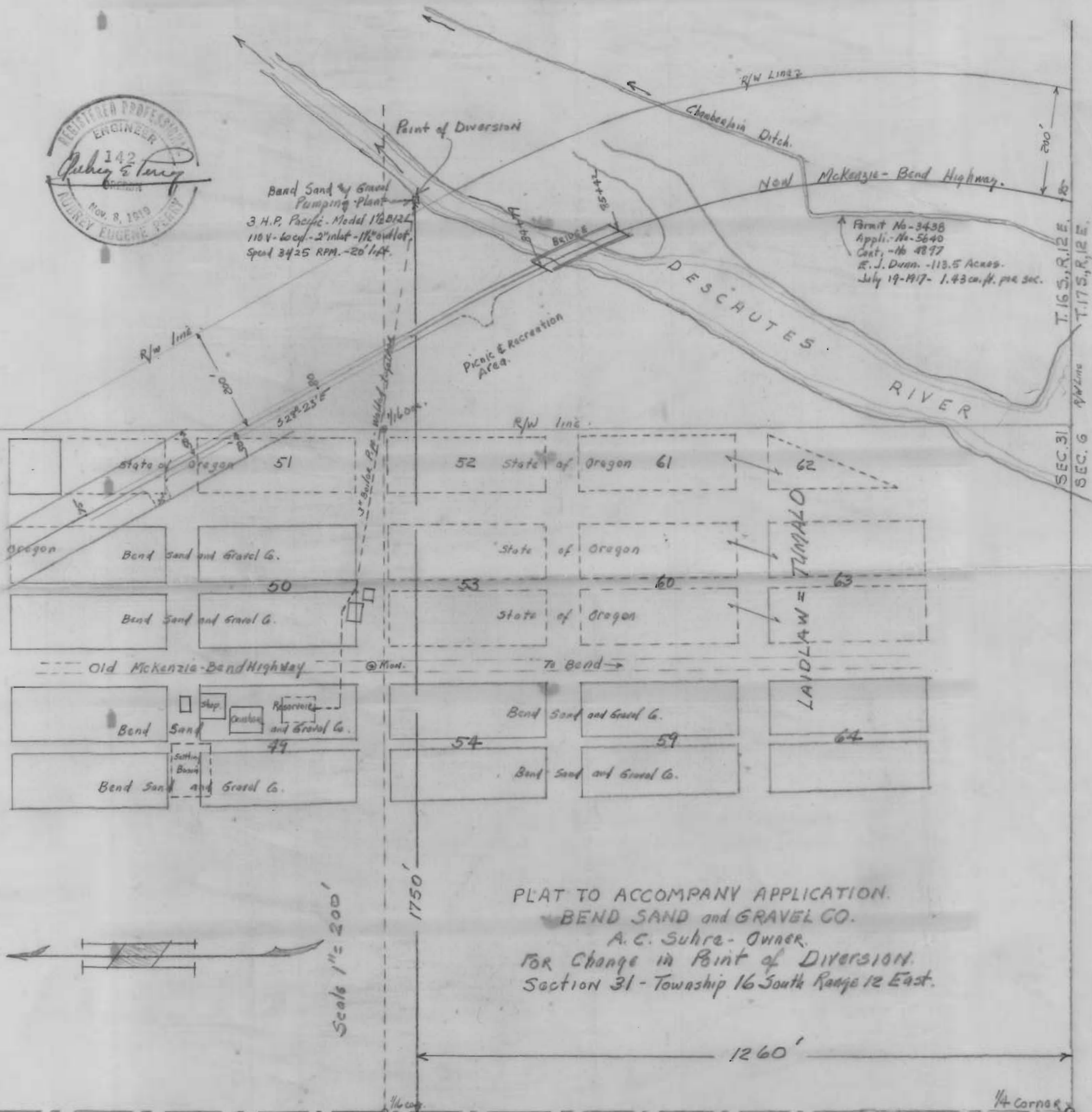




Bend Sand & Gravel
Pumping Plant
3 H.P. Pacific Model 1 1/2 B12L
110V-60cy. - 2" inlet - 1 1/2" outlet
Speed 3425 RPM. - 20' lift.

Permit No-3438
Appl. No-5640
Cont. - 48.77
E. J. Dunn. - 113.5 Acres.
July 19-1917 - 1.43 cu. ft. per sec.



PLAT TO ACCOMPANY APPLICATION.
BEND SAND and GRAVEL CO.
A. C. Suhre - Owner.
FOR Change in Point of Diversion.
Section 31 - Township 16 South Range 12 East.

RECEIVED
APR 6 1953
STATE ENGINEER
SALEM, OREGON

B-79