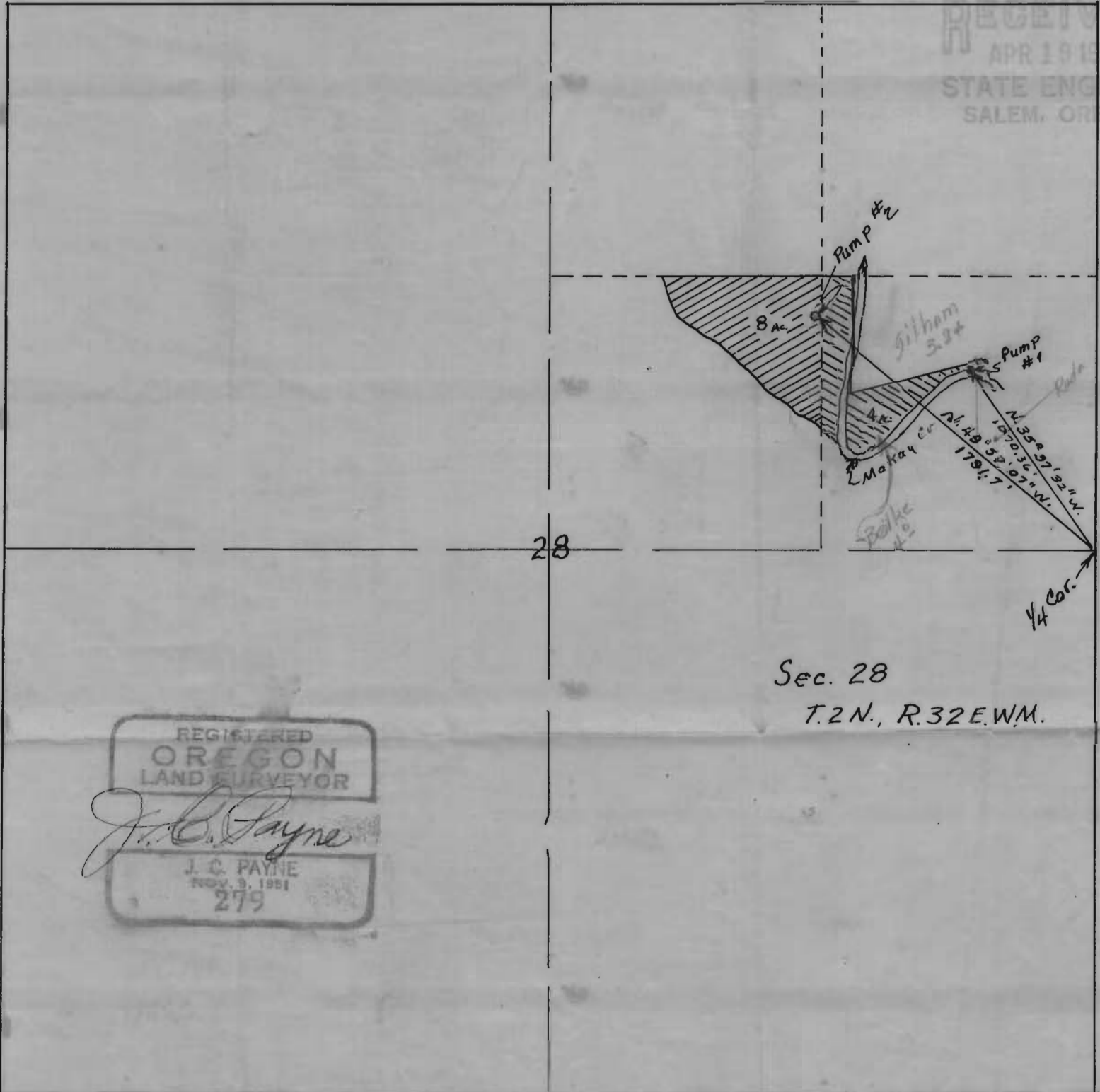


IRRIGATED LAND & PUMP  
LOCATION  
for  
HERMAN BEILKE

RECEIVED  
MAY 13 1954  
STATE ENGINEER  
SALEM, OREGON  
RECEIVED  
APR 5 1954  
STATE ENGINEER  
SALEM, OREGON

RECEIVED  
APR 19 1954  
STATE ENGINEER  
SALEM, OREGON



28

Sec. 28  
T.2N., R.32E.W.M.

REGISTERED  
OREGON  
LAND SURVEYOR  
J. C. Payne  
J. C. PAYNE  
NOV. 3, 1951  
279

B-87