

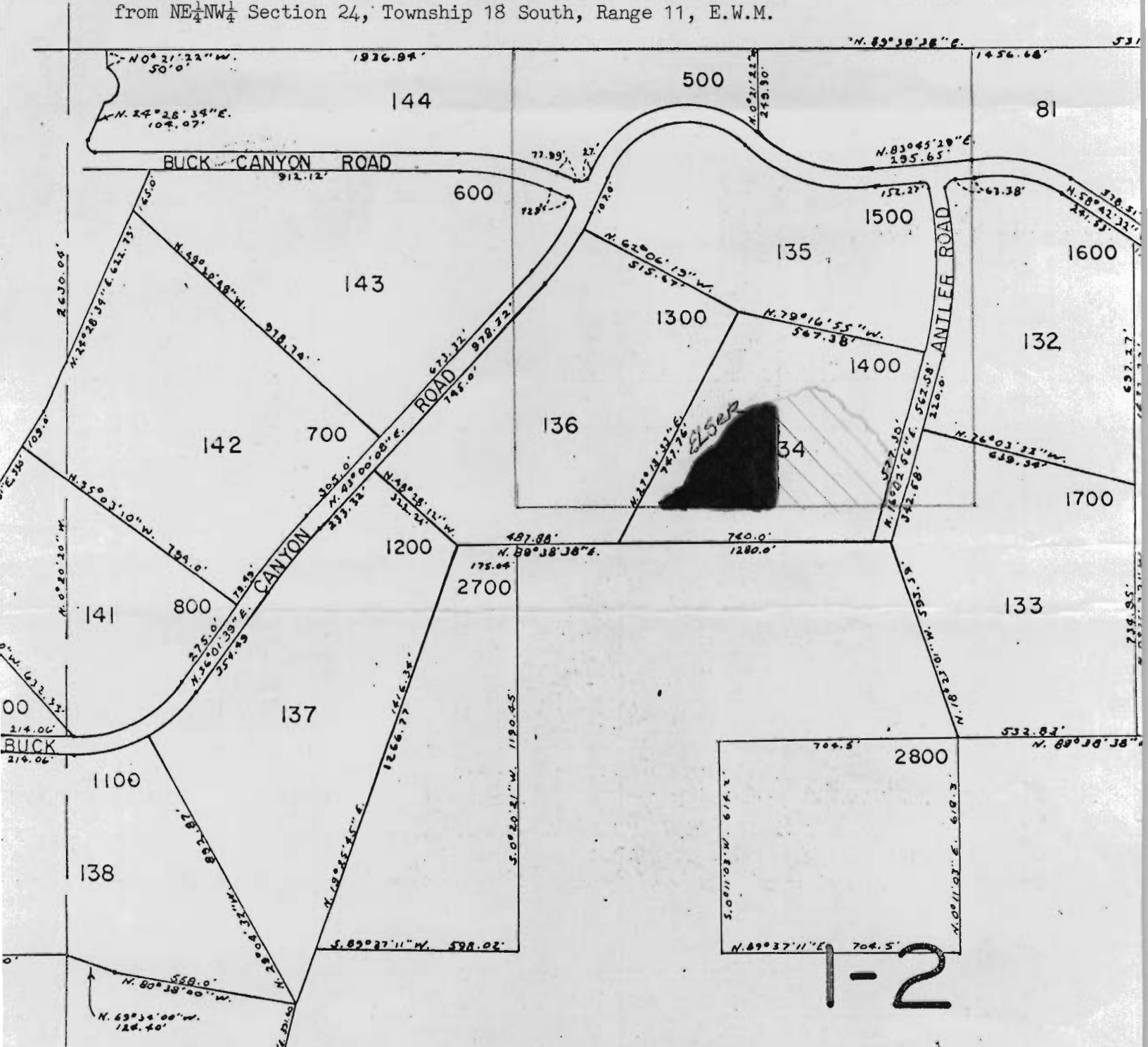
SECTION 24 T.18S. R.11E.W.M.

DESCHUTES COUNTY

1" = 400'

Approximate location of 4.6 Acres of water to be transferred from NE $\frac{1}{4}$ NW $\frac{1}{4}$  Section 24, Township 18 South, Range 11, E.W.M.

See Map 18 11



1.6 acres of water rights to be transferred from that portion colored blue.

*BUCK-ELSER Transfer*

**RECEIVED**  
NOV 19 1968  
STATE ENGINEER  
SALEM OREGON

B-192