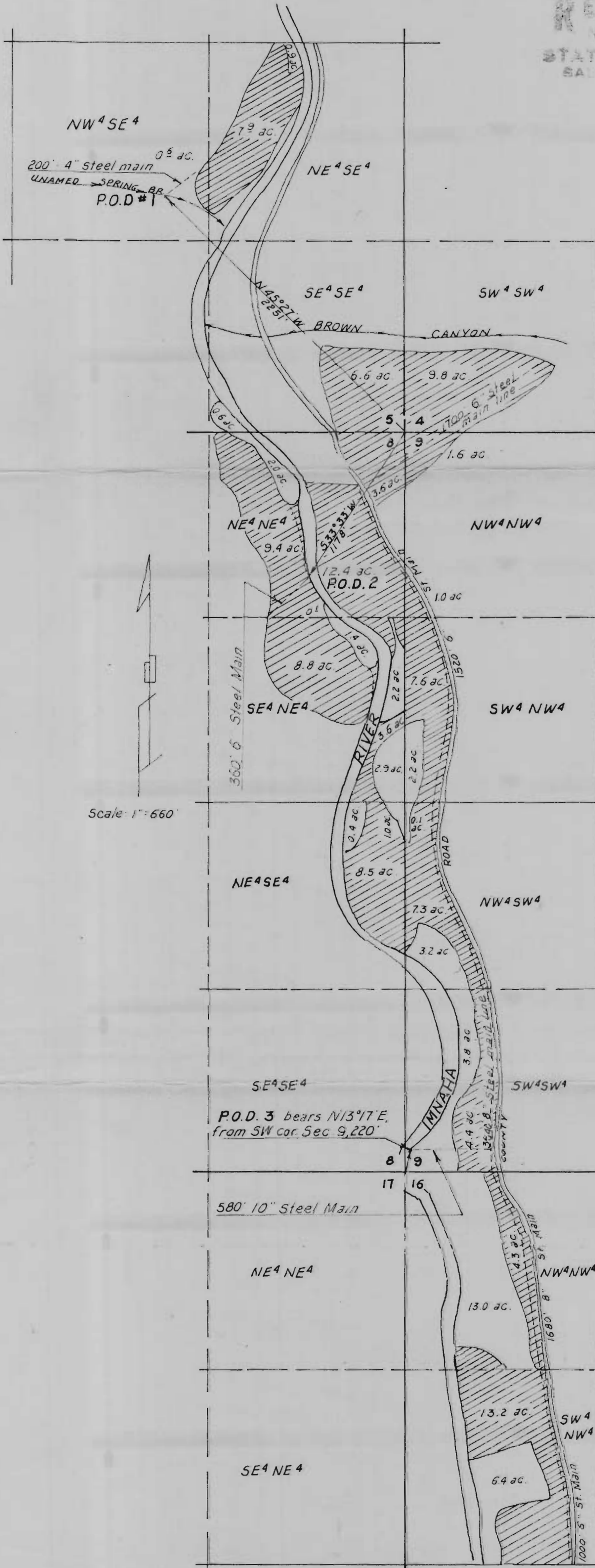


RECEIVED
 NOV 1 1968
 STATE ENGINEER
 SALEM, OREGON



SUMMARY

P.O.D. 1 bears $N45^{\circ}27'W$, 2251 feet from the SE cor. of Sec. 5, T1N, R48 E.W.M.

Sec 5	NW ⁴ SE ⁴	0.6	ac.
	NE ⁴ SE ⁴	7.9	ac.
	TOTAL	8.5	ac.

P.O.D. 3 bears $N13^{\circ}17'E$, 220 feet from the SW cor. of Sec. 9, T1N, R48 E.W.M.

Sec. 4	SW ⁴ SW ⁴	9.8	ac.
Sec. 5	SE ⁴ SE ⁴	6.6	ac.
Sec. 8	NE ⁴ NE ⁴	3.6	ac.
Sec. 9	NW ⁴ NW ⁴	1.6	ac.
	TOTAL	21.6	ac.

P.O.D. 2 bears $S33^{\circ}33'W$, 1178 feet from the NE cor. of Sec. 8, T1N, R48 E.W.M.

Sec 8	NE ⁴ NE ⁴	9.4	ac.
	SE ⁴ NE ⁴	8.8	ac.
	TOTAL	18.2	ac.

P.O.D. 3 bears $N13^{\circ}17'E$, 220 feet from the SW cor. of Sec. 9, T1N, R48 E.W.M.

Sec. 8	NE ⁴ NE ⁴	12.4	ac.
	SE ⁴ NE ⁴	3.6	ac.
	NE ⁴ SE ⁴	8.5	ac.
Sec 9	NW ⁴ NW ⁴	1.0	ac.
	SW ⁴ NW ⁴	7.6	ac.
	NW ⁴ SW ⁴	7.3	ac.
	SW ⁴ SW ⁴	4.4	ac.
Sec 16	NW ⁴ NW ⁴	4.3	ac.
	SW ⁴ NW ⁴	13.2	ac.
	TOTAL	62.3	ac.

SUMMARY of acreage to be transferred from Boothe-Weaver Ditch, the point of diversion of which bears $N22^{\circ}31'E$, 2580 feet from the SW cor. of Sec 16, T1N, R48 E.W.M., to P.O.D. 3

Sec 8	SE ⁴ NE ⁴	5.1	ac.
	NE ⁴ SE ⁴	1.4	ac.
Sec 9	SW ⁴ NW ⁴	2.2	ac.
	NW ⁴ SW ⁴	3.3	ac.
	SW ⁴ SW ⁴	3.8	ac.
Sec 16	NW ⁴ NW ⁴	13.0	ac.
	SW ⁴ NW ⁴	6.4	ac.
	TOTAL	35.2	ac.

Note: Unshaded areas denote acreage from previous filings.

Surveyed for K.G. Bentson
 By: Verne H. Russell-Reg. Land Surveyor
 Ore. 427
 Date: Oct. 9-12, 1968

Verne H. Russell