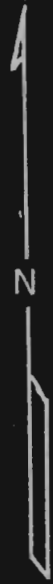
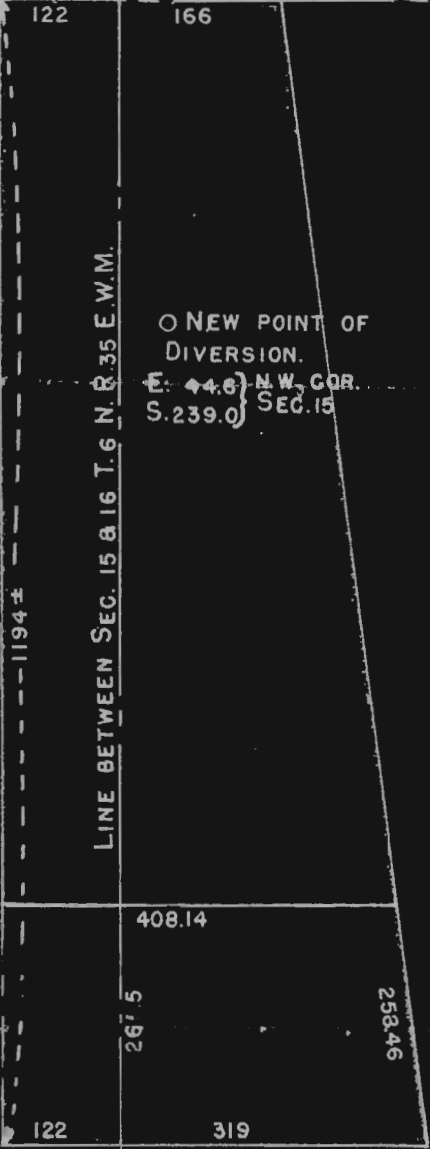


N.W. CORNER
SEC. 15

OREGON-WASHINGTON STATE BOUNDARY



Transfer C-71

APPLICATION
FOR
CHANGE OF DIVERSION.
GEORGE E. CALHOUN.
SCALE 1"=200' SEP 1947.

APPROXIMATE LOCATION. ↓
OLD POINT OF DIVERSION ○
CENTER N. W. 4 SEC. 15
E. 1320 } N.W. COR. SEC. 15
S. 1320 }

Elmo E. Robnett