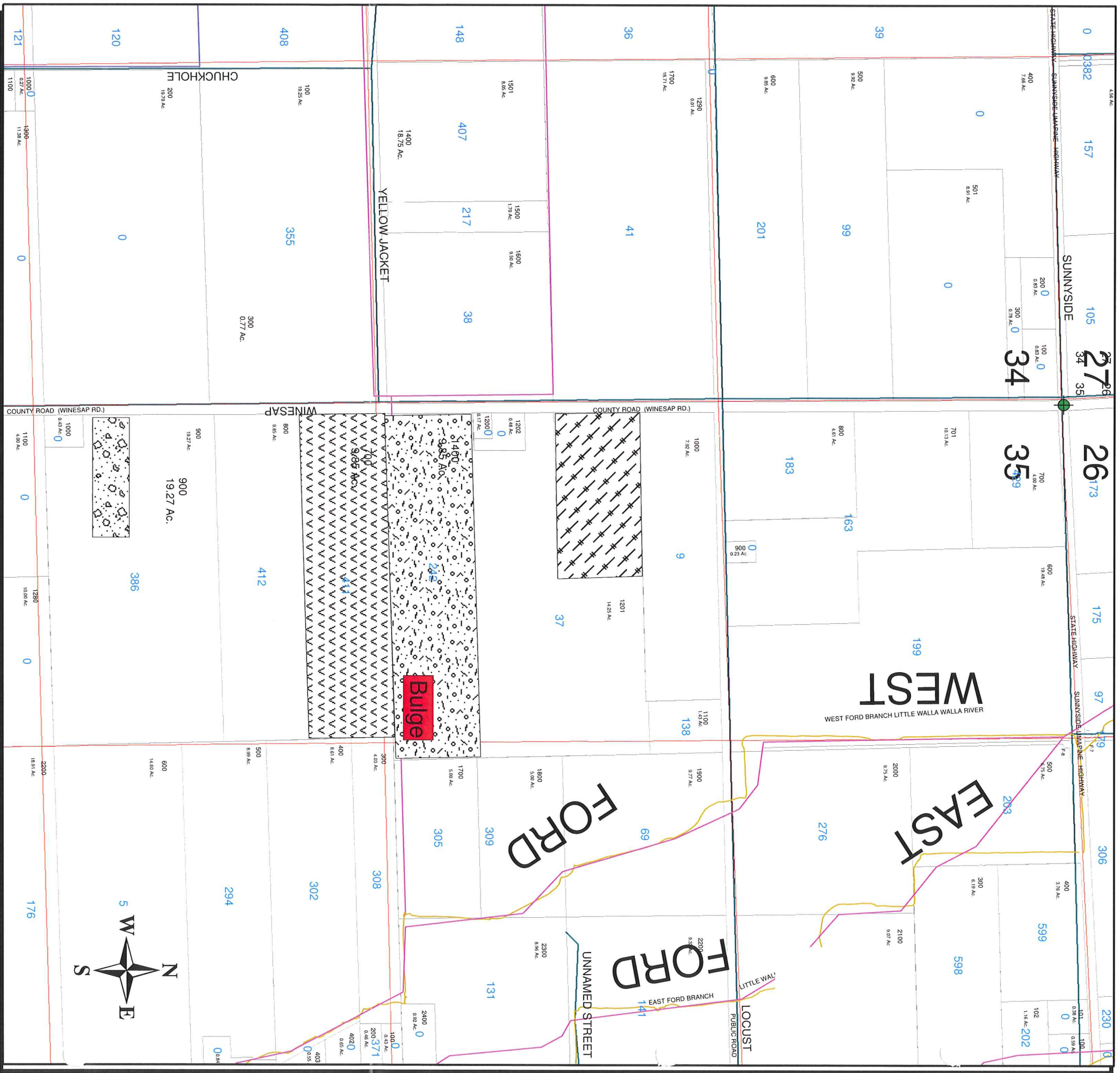








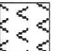

**APPLICATION MAP FOR ALLOCATION OF CONSERVED WATER  
EARL BROWN & SONS BULGE PROJECT #2  
T6N, R35E WM, S35**



**Legend**

-  section\_mrk
-  Lydell\_ditch
-  Powell\_PV
-  1/4 1/4 sec lines
-  Roads

**AREA OF CONSERVATION**

-  3.0 ACRES CERT 13126 1898
-  5.0 ACRES CERT 13088 1886
-  2.41 ACRES CERT 12768 1898

**AREA RECEIVING CONSERVED WATER**

-  1.1 ACRES CERT 13126 1898
-  0.9 ACRES CERT 12768 1898

**RECEIVED**  
JUL 30 2003  
WATER RESOURCES DEPT.  
SALEM, OREGON

