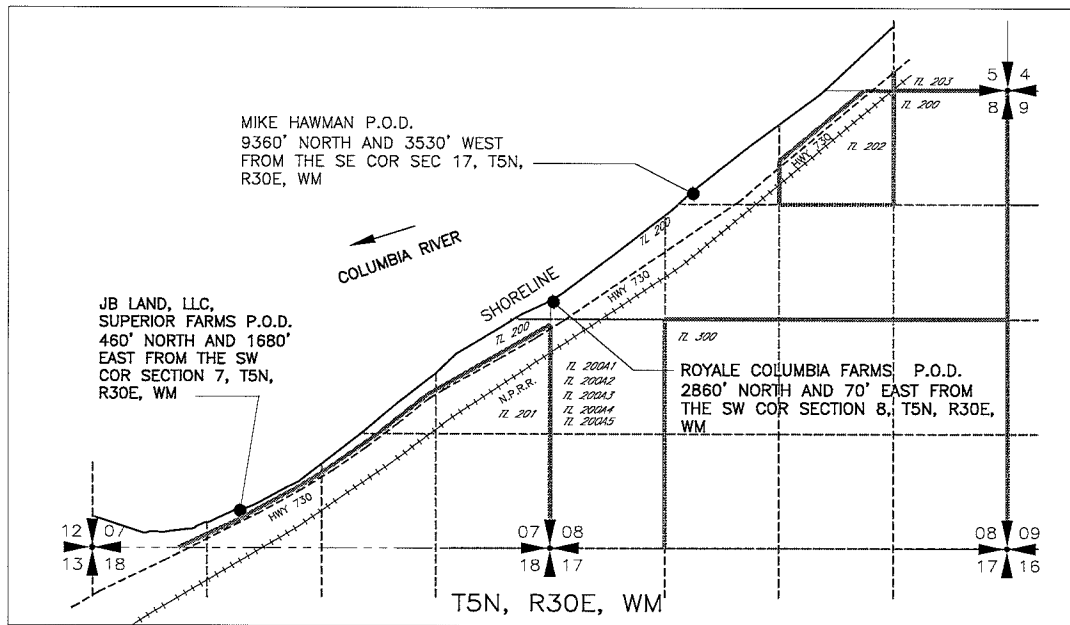
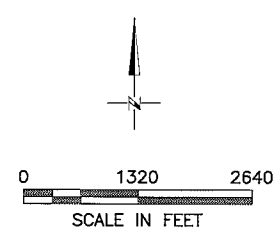
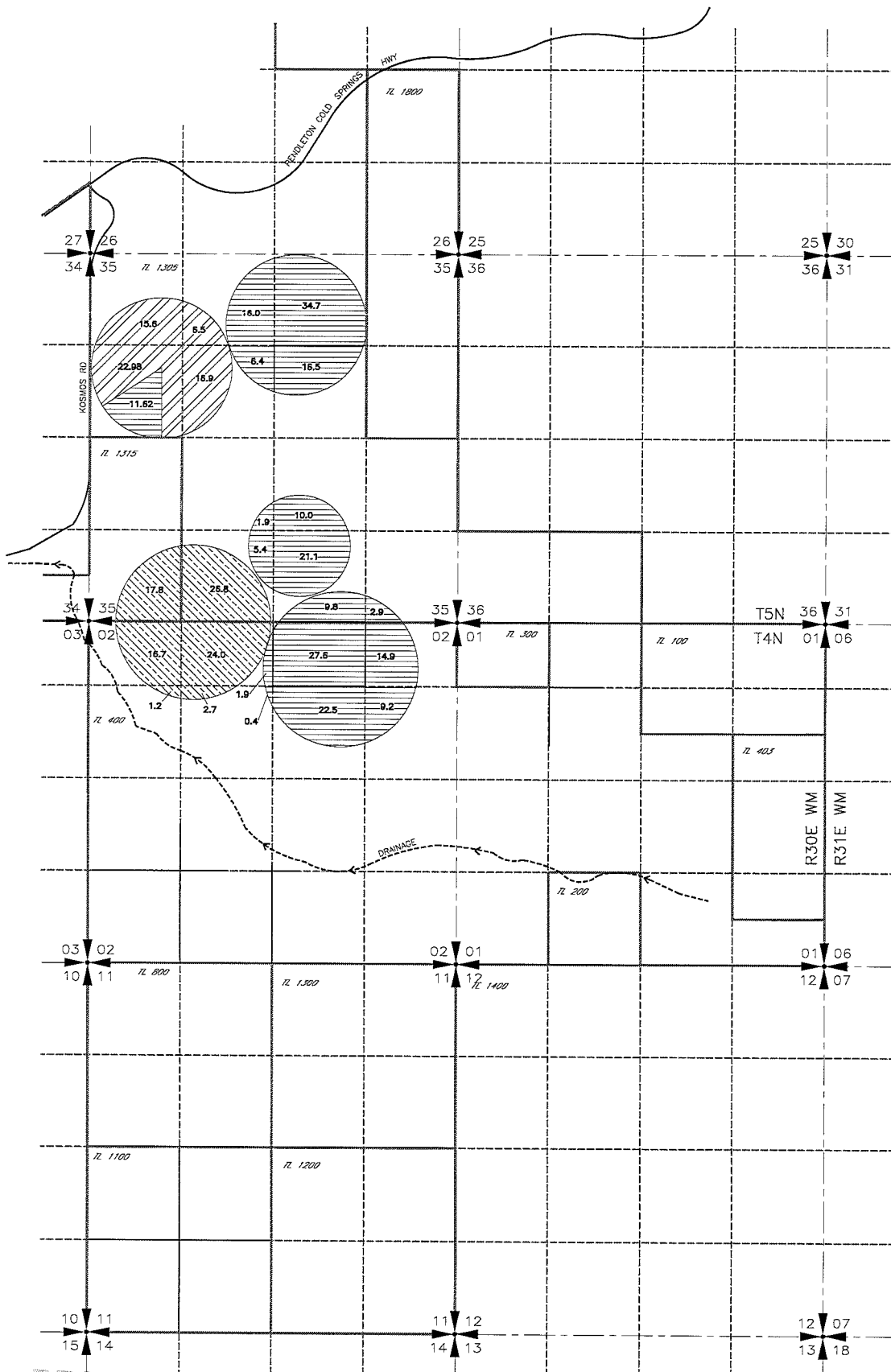


HAWMAN FARMS, INC
 CONSERVED WATER APPLICATION CW-63
 MAP FOR ALLOCATION AND USE OF A
 PORTION OF THE CONSERVED WATER
 T5N, R30E, WM



POINTS OF DIVERSION FOR NEW LAND TO RECEIVE WATER



- LEGEND
- NEW LAND TO RECEIVE WATER RIGHTS
- 89.2 ACRES ASSOCIATED WITH ORIGINATING CERT 36803
 - 61.98 ACRES ASSOCIATED WITH ORIGINATING CERT 37974
 - 212.82 ACRES ASSOCIATED WITH ORIGINATING CERT 37975

NOTE:
 THE PURPOSE OF THIS MAP IS TO IDENTIFY THE APPROXIMATE LOCATION
 OF THE WATER RIGHT. IT IS NOT INTENDED TO PROVIDE INFORMATION
 RELATIVE TO THE LOCATION OF PROPERTY OWNERSHIP BOUNDARY LINES.

NEW LAND TO RECEIVE WATER

RECEIVED
 JAN 26 2011

WATER RESOURCES DEPT
 SALEM, OREGON