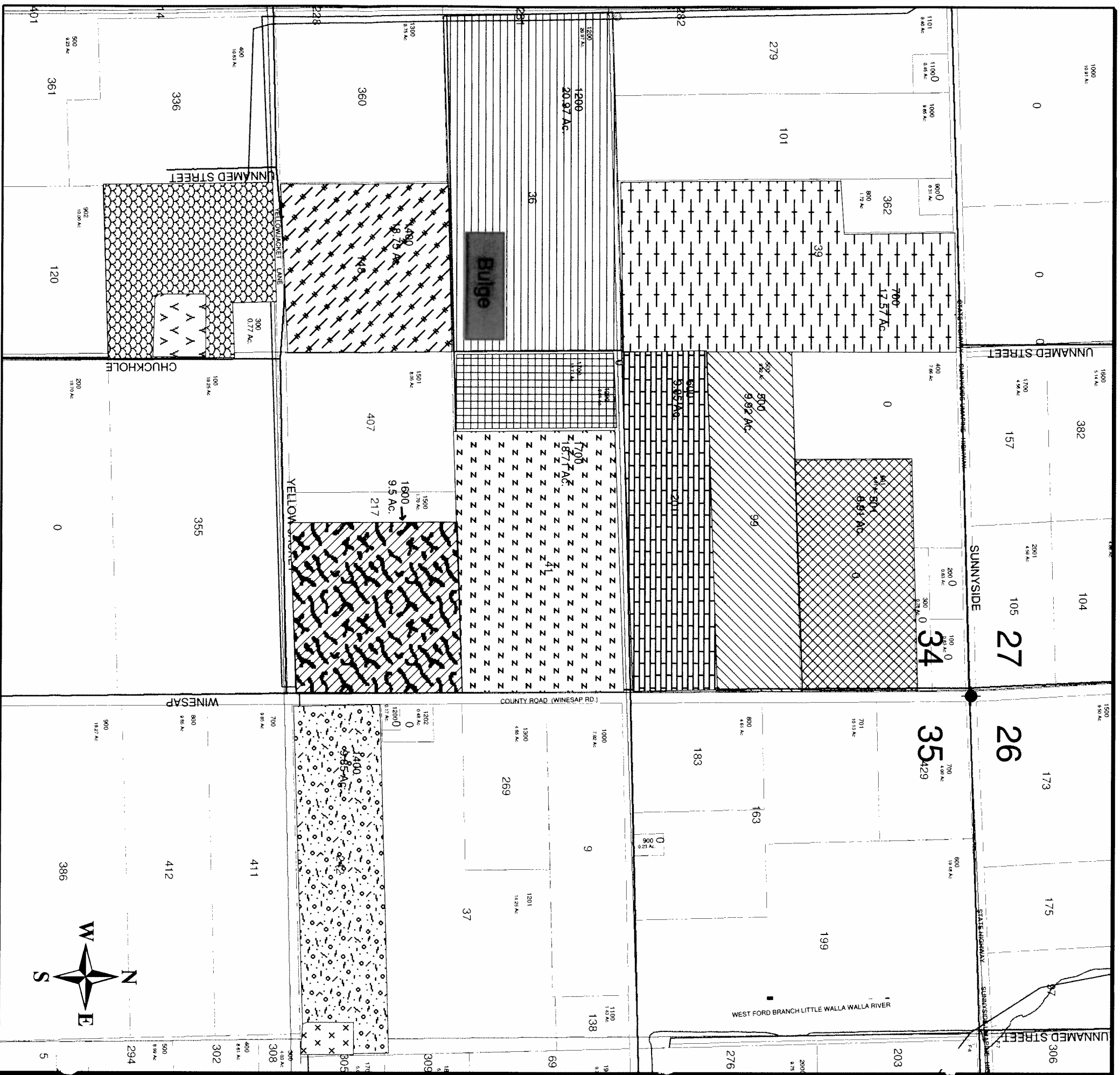


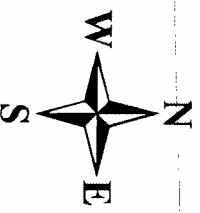
**APPLICATION MAP FOR ALLOCATION OF CONSERVED WATER
EARL BROWN & SONS BULGE PROJECT
T6N, R35E WM, S34 & S35**



- ### Legend
- section_mrk
 - Lydell_ditch
 - Powell_PV
 - 1/4 1/4 sec lines
 - Roads

- ### AREA OF CONSERVATION
- 9.9 ACRES CERT 12676 1893
 - 9.9 ACRES CERT 12677 1886 1893
 - 17.57 ACRES OF CERT 12917 1901
 - 20 ACRES CERT 12682 1901
 - 4.0 ACRES CERT 12565 1890
 - 9.5 ACRES CERT 12687 1893
 - 5.00 ACRES CERT 49219 1886
 - 4.75 ACRES CERT 49565 1977
 - 5.00 ACRES CERT 45330 1917
 - 7.5 ACRES CERT 39257 1890 1904
 - 1.0 ACRES CERT 13128 1871

- ### AREA RECEIVING CONSERVED WATER
- 1.57 ACRES CERT 12917 1901
 - 3.71 ACRES CERT 12676 1893
 - 3.38 ACRES CERT 12677 1886
 - 0.34 ACRES CERT 12677 1893
 - 5.01 ACRES CERT 12917 1901
- ### AREA FROM WHICH WATER IS BEING TRANSFERRED
- 10 ACRES CERT 45330 1917
- ### AREA RECEIVING TRANSFERRED WATER
- 9.5 ACRES CERT 45330 1917 5.6 GPM/ACRE
 - 0.5 ACRES CERT 45330 1917 5.6 GPM/ACRE



RECEIVED
JUL 3 0 2003

0 200 400 800
1 inch equals 400 feet

Water right map created by
Walla Walla Basin Watershed Council
for information purposes only
Created in ArcGIS 8 using ArcMap



WATER RESOURCES DEPT.
SALEM, OREGON