

Dee Irrigation District Distribution System Improvements

Legend

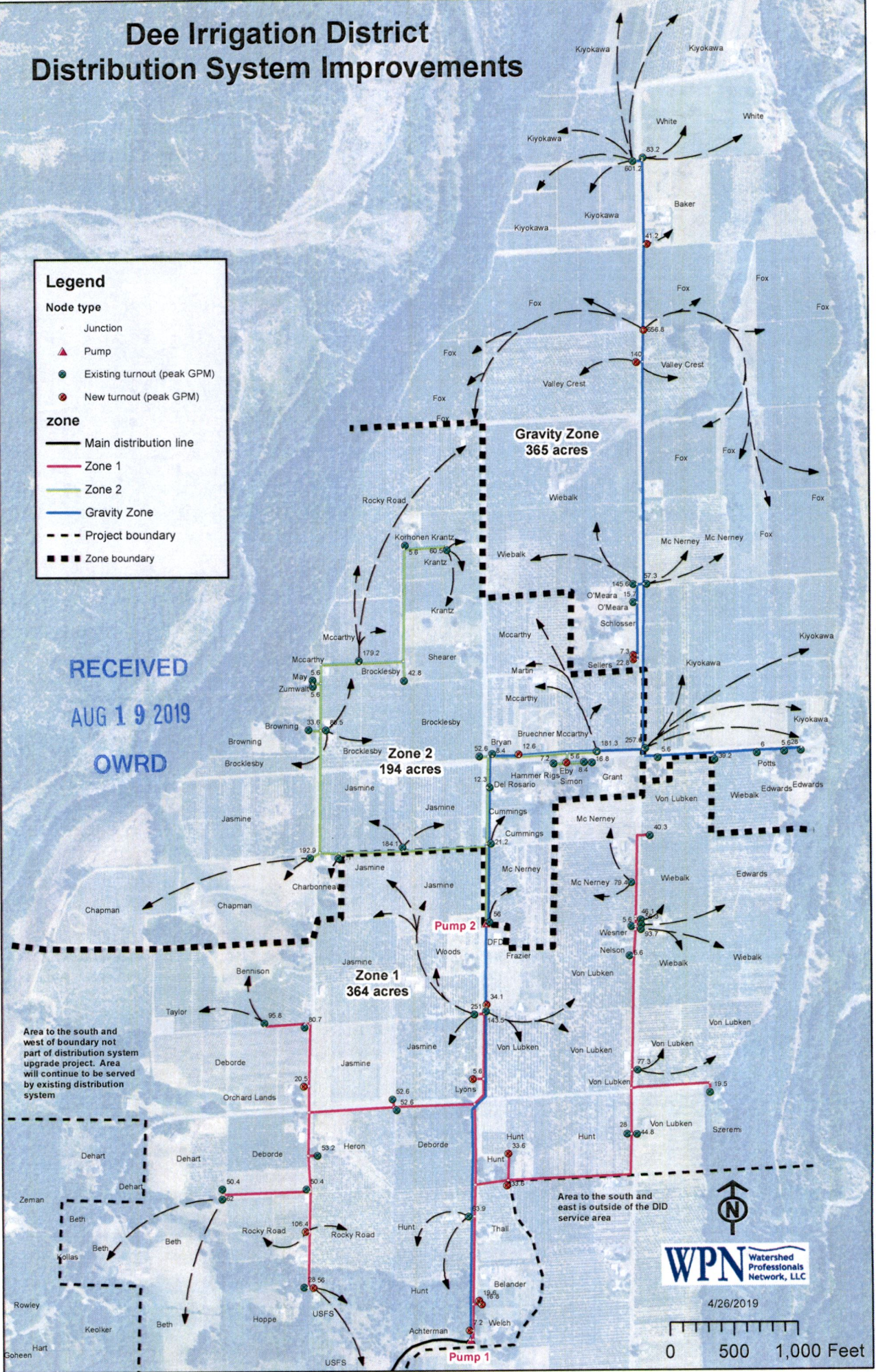
Node type

- Junction
- ▲ Pump
- Existing turnout (peak GPM)
- New turnout (peak GPM)

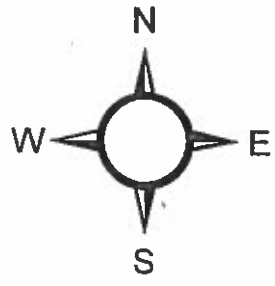
zone

- Main distribution line
- Zone 1
- Zone 2
- Gravity Zone
- - - Project boundary
- ■ ■ Zone boundary

RECEIVED
AUG 19 2019
OWRD



T. 1 N., R. 9 E., W.M.

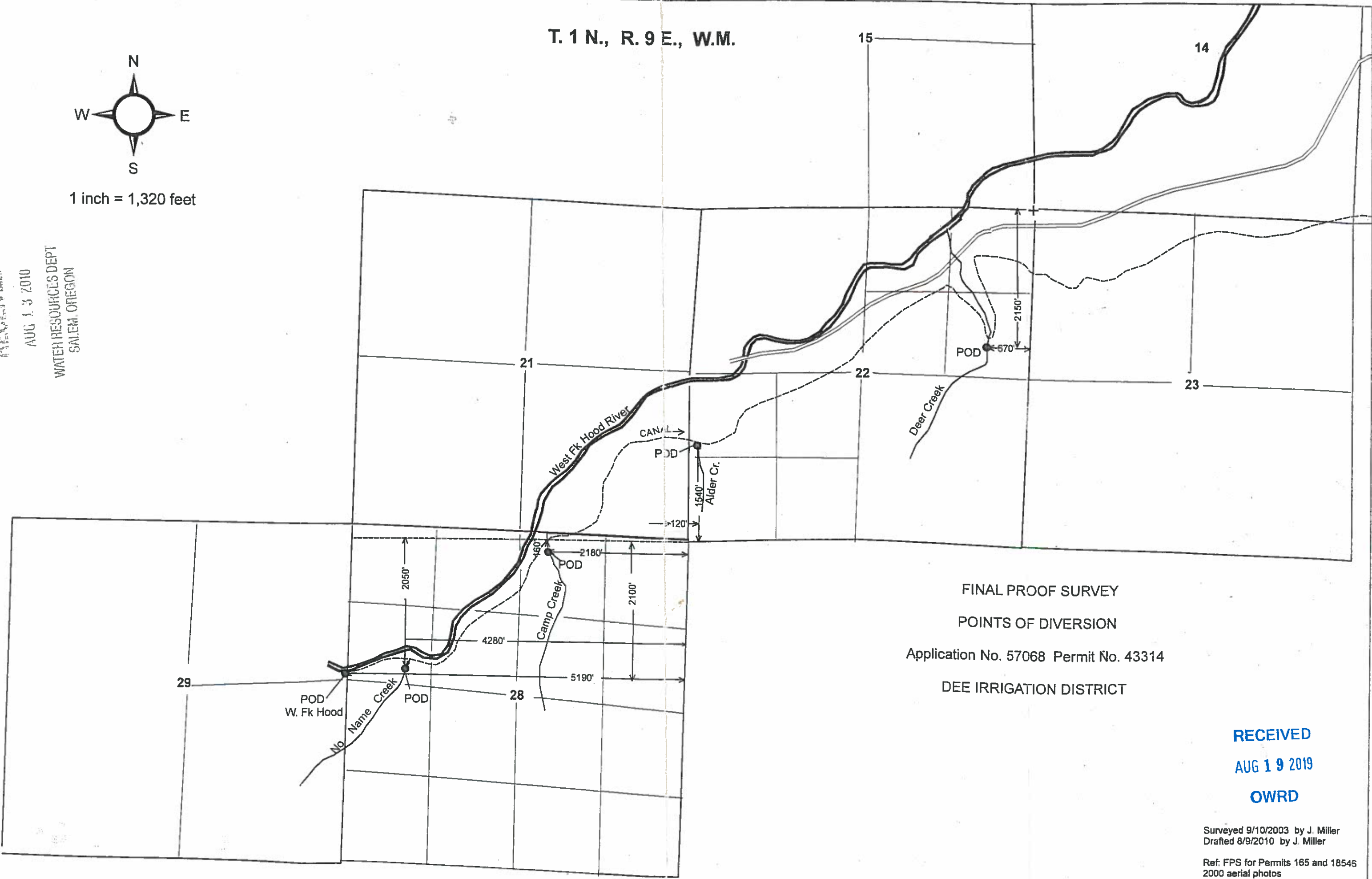


1 inch = 1,320 feet

RECEIVED

AUG 13 2010

WATER RESOURCES DEPT
SALEM, OREGON



FINAL PROOF SURVEY

POINTS OF DIVERSION

Application No. 57068 Permit No. 43314

DEE IRRIGATION DISTRICT

RECEIVED

AUG 19 2019

OWRD

Surveyed 9/10/2003 by J. Miller
Drafted 8/9/2010 by J. Miller

Ref: FPS for Permits 165 and 18546
2000 aerial photos
and topographic maps

T. 1N. & R. 9E. & 10E. W.M.

RECEIVED

AUG 13 2010

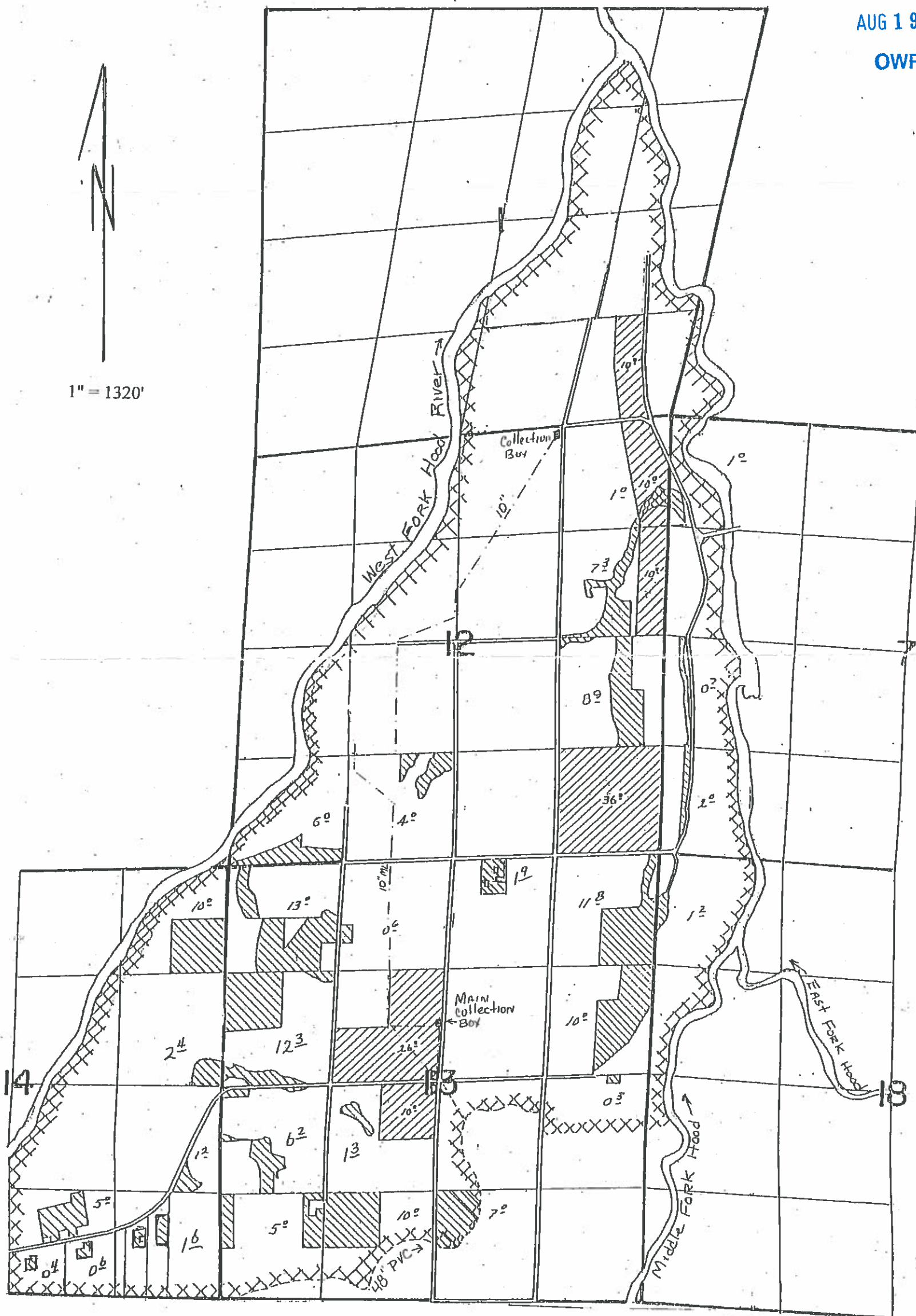
WATER RESOURCES DEPT
SALEM, OREGON

RECEIVED

AUG 19 2019

OWRD

1" = 1320'





**FINAL PROOF SURVEY
UNDER**

Application No. 57068 Permit No 43314

**IN NAME OF
DEE IRRIGATION DISTRICT**

Surveyed 9/10/2003 by J. Miller

	Frost Protection
	New Land

	Boundary of Stack Water
	Spray Water

irrig water

Drafted 8/4/2010 by J. Miller 2000 aerial photos & topographic maps