

7800

MAP

Accompanying application of ANNA MANSFIELD, GEORGE HARRIOTT, JOHN HARRIOTT, and TOM HARRIOTT. of Applegate, Jackson Co Oregon. for permit to appropriate the waters of the Big Applegate River, tributary to Rogue River, Jackson County, Oregon.

March 1918.

Description of Lands under This application as plotted on Map.

Decreed to Anna Mansfield and F. Benedict now owned by

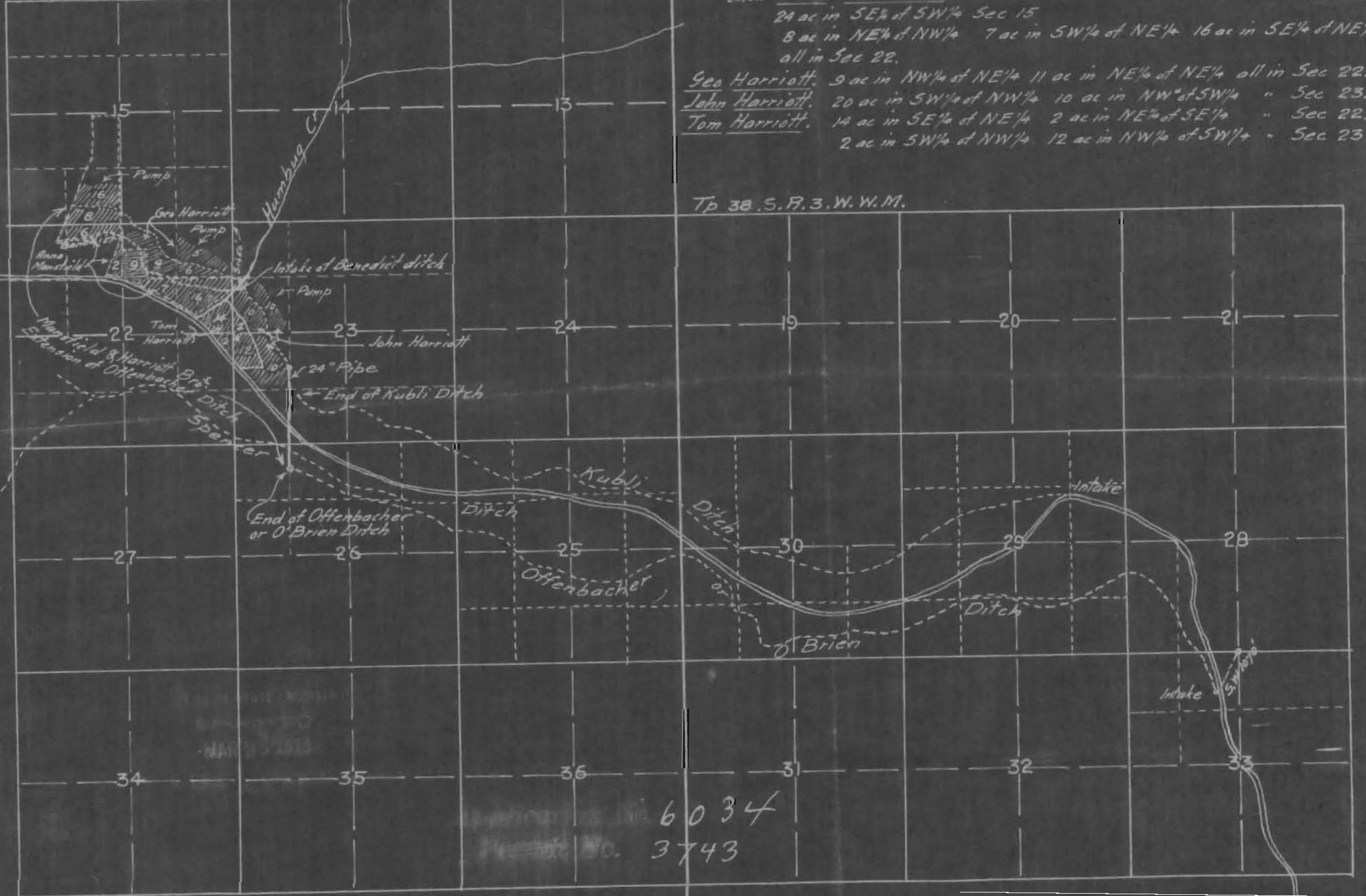
Anna Mansfield } supplemental supply. under this application
9 Acres in NW of NE all in Sec 22

New Lands under this Application

Anna Mansfield
24 ac in SE of SW 1/4 Sec 15
8 ac in NE of NW 1/4 7 ac in SW of NE 1/4 16 ac in SE of NE 1/4 all in Sec 22.
Geo Harriott. 9 ac in NW of NE 1/4 11 ac in NE of NE 1/4 all in Sec 22.
John Harriott. 20 ac in SW of NW 1/4 10 ac in NW of SW 1/4 " Sec 23.
Tom Harriott. 14 ac in SE of NE 1/4 2 ac in NE of SE 1/4 " Sec 22.
2 ac in SW of NW 1/4 12 ac in NW of SW 1/4 " Sec 23.

Tp 38 S. R. 4 W. W. M.

Tp 38 S. R. 3 W. W. M.



6034
3743

Map compiled from Official records and surveyed plat of the above lands the same correctly showing all lands to be irrigated, together with the streams and ditches in immediate vicinity.

Fred. N. Cummings. C.E.

7800

7800