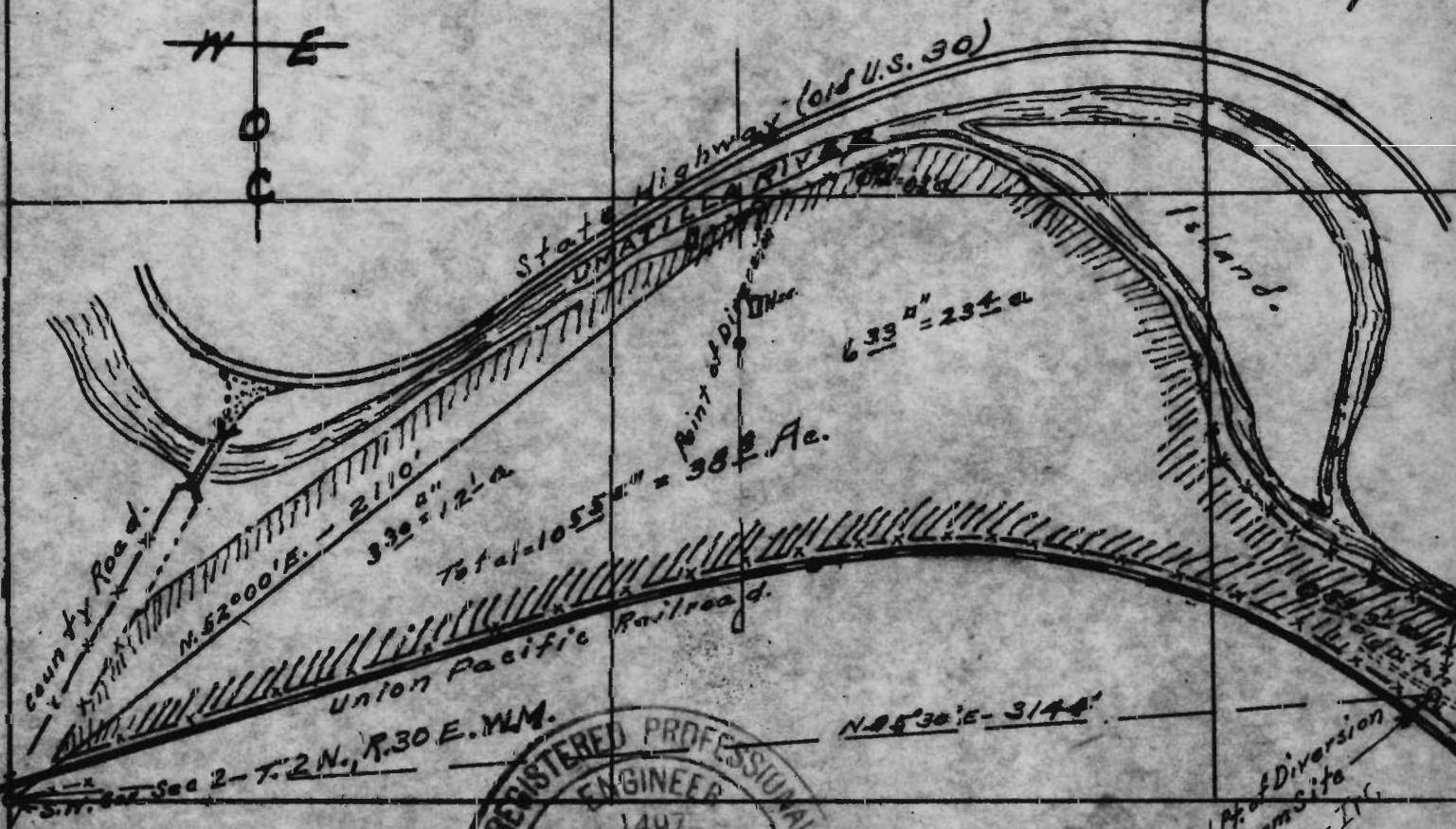
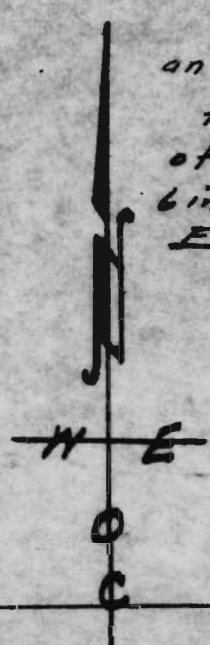


RECEIVED
 MAY 25 1953
 STATE ENGINEER
 SALEM, OREGON

Plat showing part of
 sec. 2 T.2 N. R.30 E. W.M. Owned & operated by
 Clint Lewis - Pendleton, Ore.
 surveyed, staked & platted May - 1953 -
 By W.E.O. Criger - Scale: 1" = 400' Const = 1.003670.

I, W.E.O. Criger of Pendleton, Oregon do hereby
 certify that this map was made from notes taken during
 an actual survey made by me on May-13-1953;
 that the monument shown on this map consisting
 of a 3/4" Iron pipe 3 Ft. long and the top of which is
 6 inches above the ground is N.52°00'E - 2110 Ft.
 From

W.E.O. Criger



REGISTERED PROFESSIONAL
 ENGINEER
 1497
W.E.O. Criger
 OREGON
 MAR. 9, 1931
 W. E. O. CRIGER

Old Pt. of Diversion
 dam Site
 Horseshoe I.C.
 Co. ditch

ph. 397 / or 134