

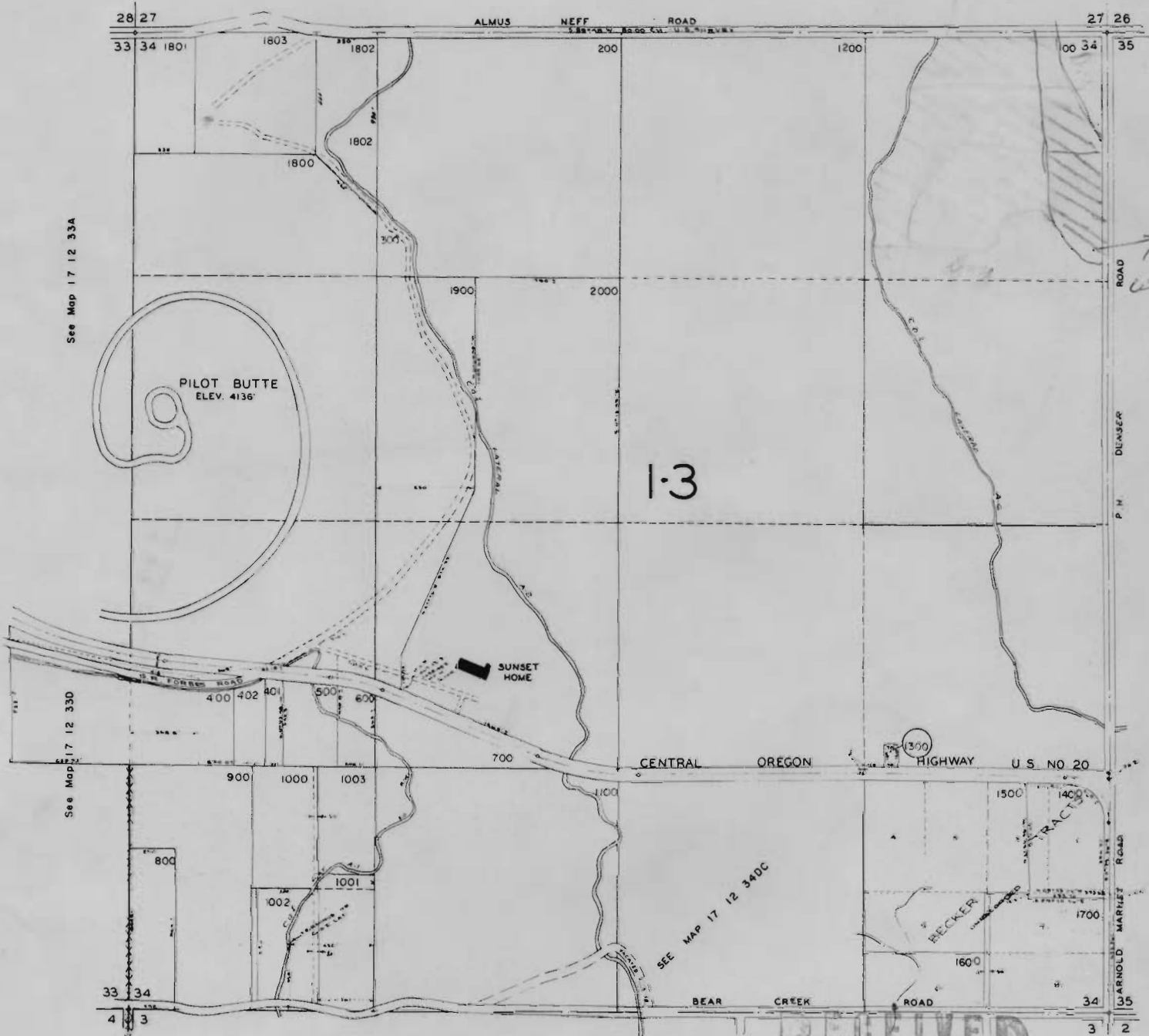
SEC. 34 T.17 S. R.12 E. W.M.

17 12 34

DESCHUTES COUNTY

SCALE: 1" = 400'

See Map 17 12 27



See Map 17 12 33A

See Map 17 12 330

See Map 17 12 35

See Map 18 12 3

For Floyd L. Holt, 10 Rocklyn Road, Bend, Oregon

RECEIVED  
 APR 18 1966  
 STATE ENGINEER 17 12 34  
 SALEM OREGON