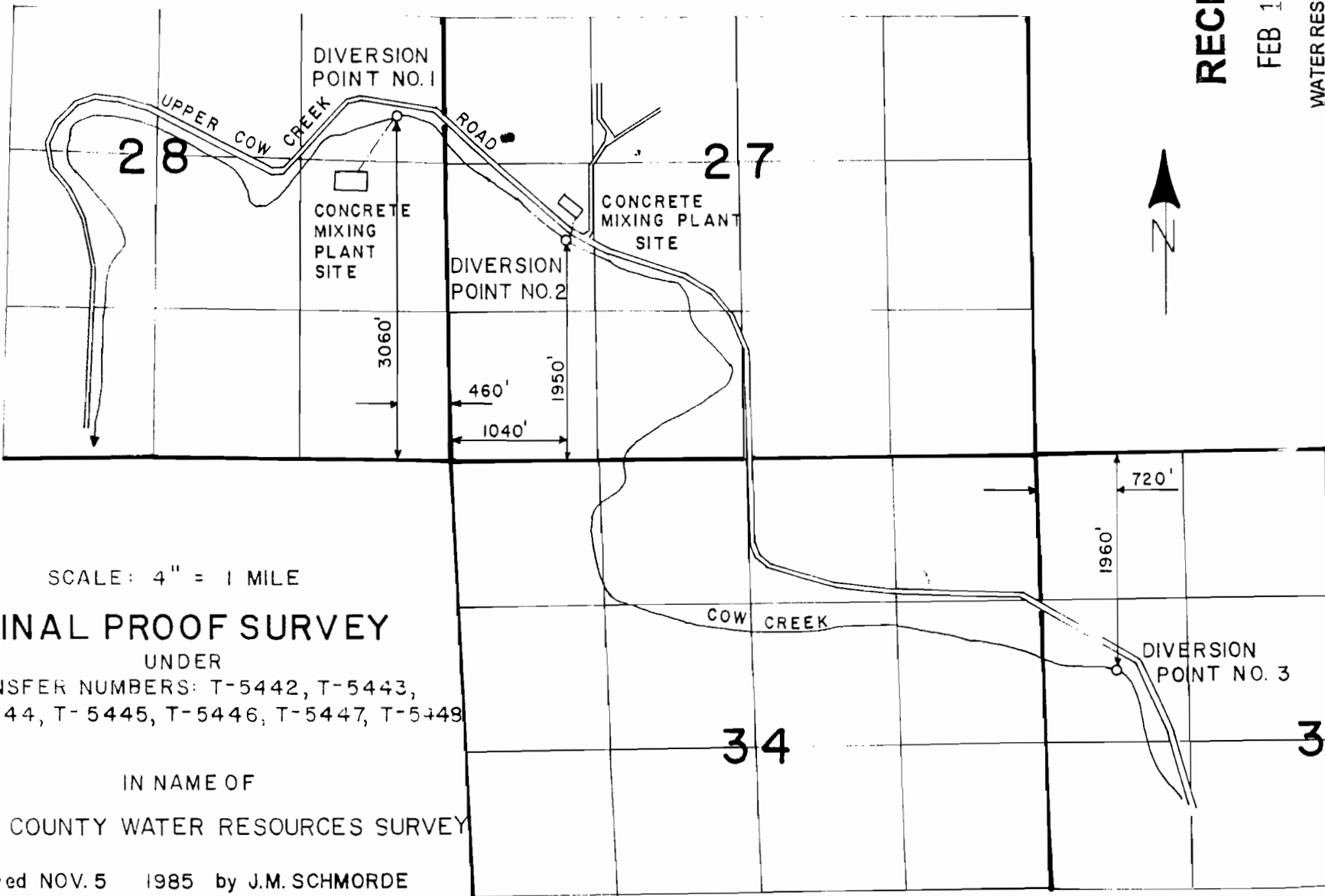


T. 31 S., R. 4 W., W. M.

RECEIVED

FEB 10 2004

WATER RESOURCES DEPT  
SALEM, OREGON



SCALE: 4" = 1 MILE

### FINAL PROOF SURVEY

UNDER

TRANSFER NUMBERS: T-5442, T-5443,  
T-5444, T-5445, T-5446, T-5447, T-5448

IN NAME OF

DOUGLAS COUNTY WATER RESOURCES SURVEY

Surveyed NOV. 5 1985 by J.M. SCHMORDE

8227

10684

SEC. 5 T.32S. R.4 W. W.M.  
DOUGLAS COUNTY

REVISED ON  
10-14-94

1"=400'

SEE MAP 314 32

32

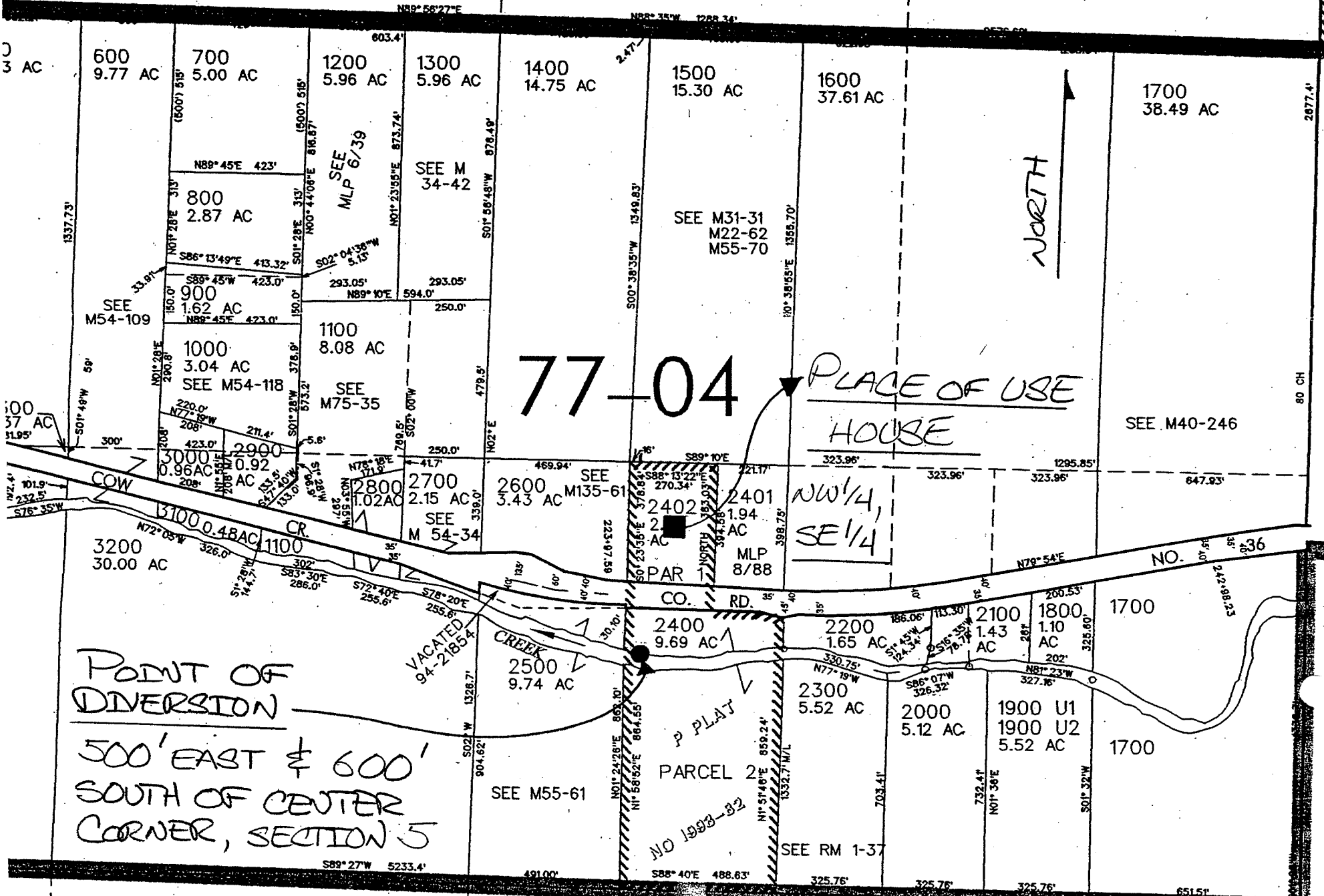
5

LOT 40.00

LOT 40.00

LOT 40.00

77-00



RECEIVED  
JUL 01 2002  
WATER RESOURCES DEPT.  
SALEM, OREGON

RECEIVED  
FEB 10 2004  
WATER RESOURCES DEPT  
SALEM, OREGON