

"ON" MAP

FOR A PARCEL OF LAND SITUATED IN THE SE 1/4, SW 1/4 AND THE SW SECTION 18, T15S, R11E, W.M., DESCHUTES COUNTY, OREGON

LEASE NW ① 440x2150 + 3900x479 = 5.85 ac
 (67500) + (186,800) = (254,300)

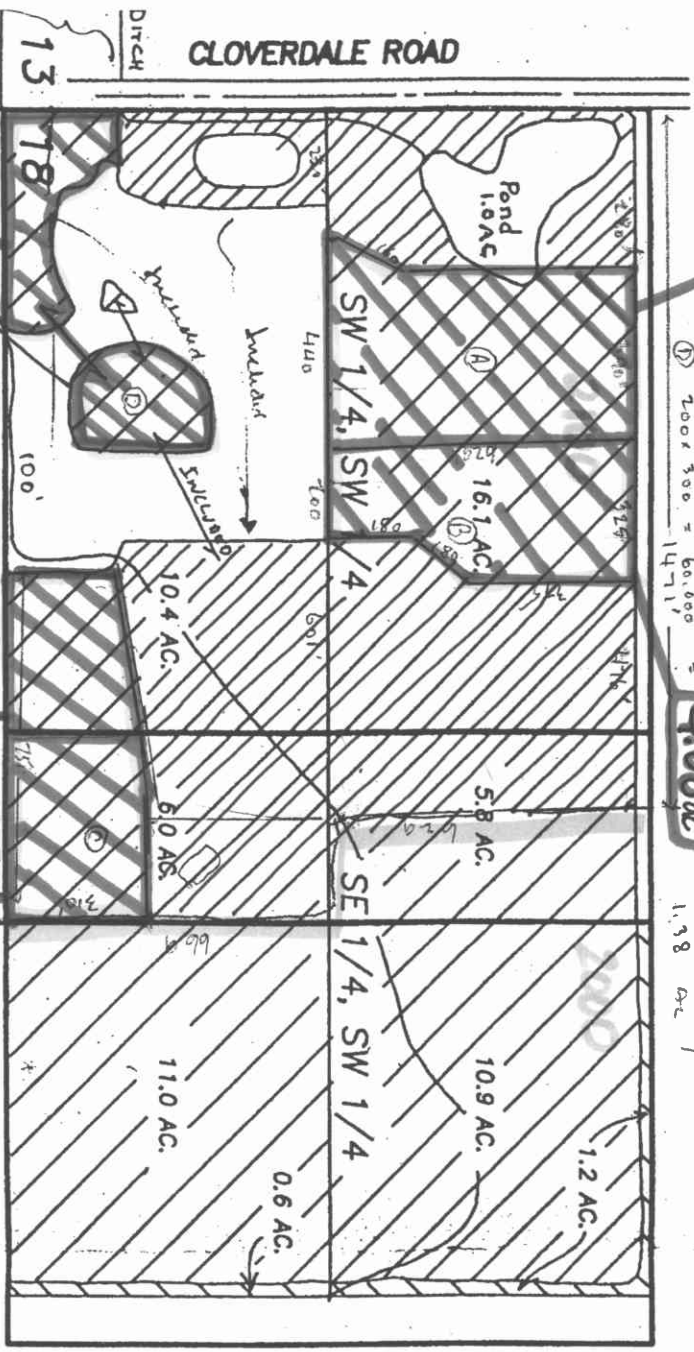
5.85ac

② 200x180 + 325 x 315 + 262x74 = (36000) + (102875) + (19388) = 177263 = 4.08 ac
 ③ 310 x 750 = 232500 = 5.34 ac
 ④ 200 x 300 = 60,000 = 1.38 ac
 1471' }

4.08ac

16.65 ac

NW Quad	16.1 ac
Row B	1.0 / 17.1 ac
NE Quad	5.80
Sec 10	(2.03)
SW Quad	3.11
Sec 10	10.4
Sec 10	6.0
Present Total	36.67



T15S, R11E, W.M., 1671'
 DESCHUTES CO., OREGON

2.95 ac
2.59 ac

3.23 ac

