

T.9S. R.14E. W.M.

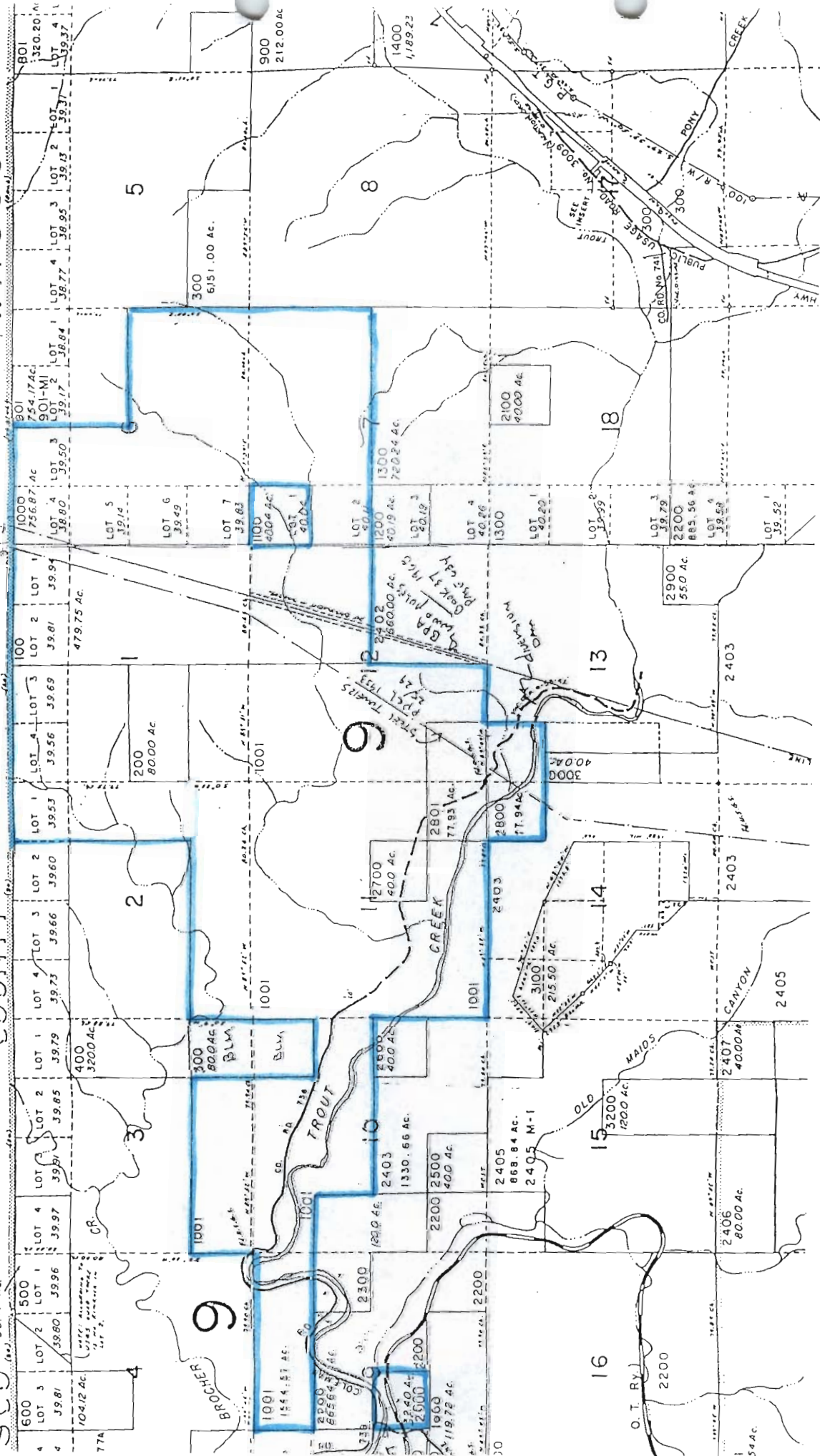
JEFFERSON COUNTY

SCO 95.47 Ac. 1" = 2000

This Map Was Prepared For Assessment Purpos Only.

NOV 1996

WASCO

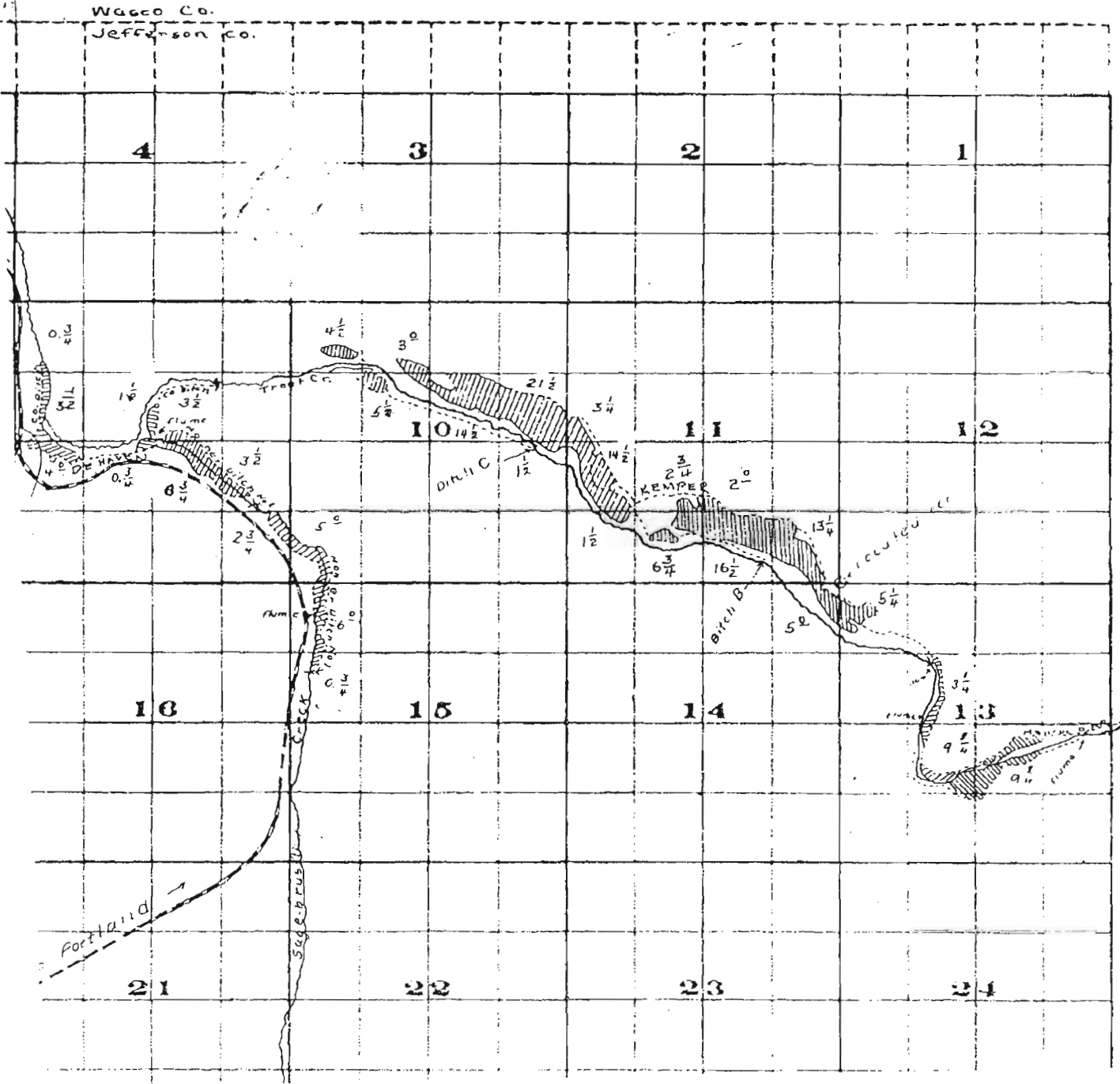


"OFF" MAP 1

T 9 S,

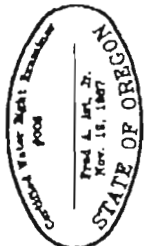
Range 14, E.W.M.

Wagco Co.
Jefferson Co.



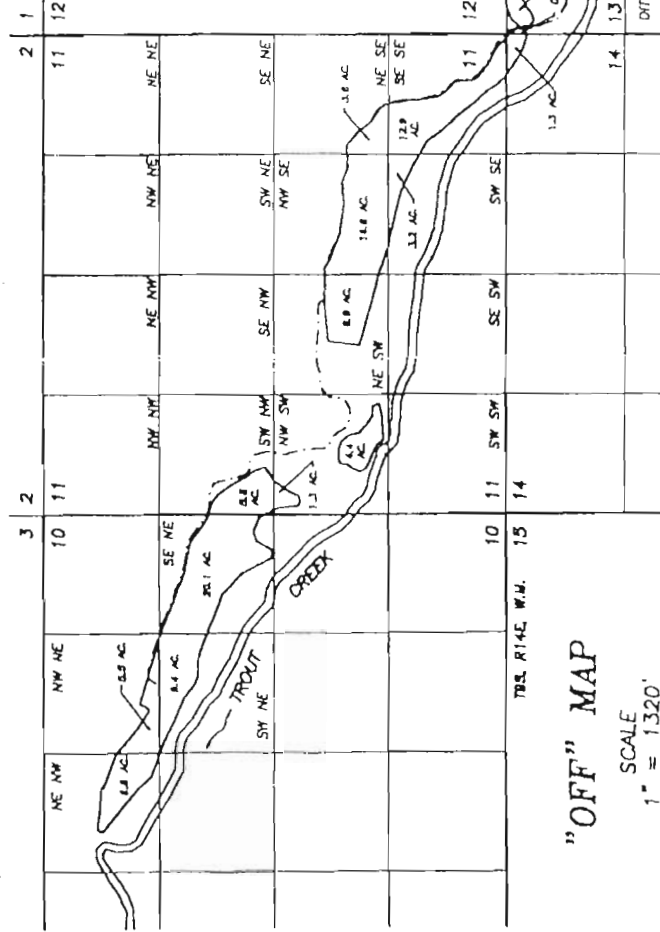
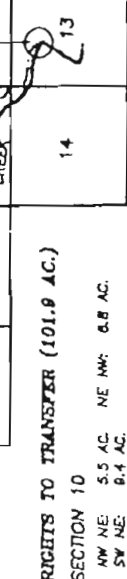
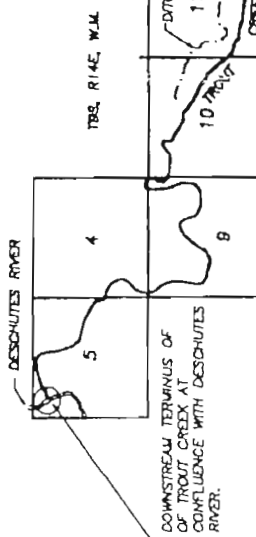
WATER RIGHT TRANSFER APPLICATION MAP

TRANSFER NO. _____



POINT OF DIVERSION IS 5.36 AC. 2200' +/- FROM NW CORNER OF SECTION 11, T8S, R14E, W4M, JEFFERSON CO., OREGON

"ON" MAP
SCALE
1" = 5280'



RIGHTS TO TRANSFER (101.9 AC.)

SECTION 10
NW NE: 5.5 AC. NE NW: 8.8 AC.
SW NE: 8.4 AC.
SE NE: 20.1 AC.
TOTAL: 41.8 AC.

SECTION 11
NE SE: 3.0 AC.
NW SE: 5.8 AC.
NW SW: 8.9 AC.
SW SW: 5.7 AC.
TOTAL: 36.7 AC.

SECTION 13
NW NW: 2.1 AC.

SECTION 14
NE NE: 1.3 AC.

PLACE OF USE

PORTIONS OF SEC. 10, 11, 13 & 14, T8S, R14E, W4M, JEFFERSON COUNTY, OREGON

PROPOSED PLACE OF USE

TROUT CREEK (IN STREAM) BELOW RIVER MILE 7 TO MOUTH OF TROUT CREEK AT DESCHUTES RIVER.

APPLICANT

OREGON WATER TRUST
111 NAVO PARKWAY
SUITE 404
PORTLAND, OREGON 97204

ON BEHALF OF LANDOWNER

TROUT CREEK RANCH
P.G. & E., INC.
121 SW SALMON STREET
PORTLAND, OREGON 97204

"OFF" MAP

SCALE
1" = 1320'

68-120099