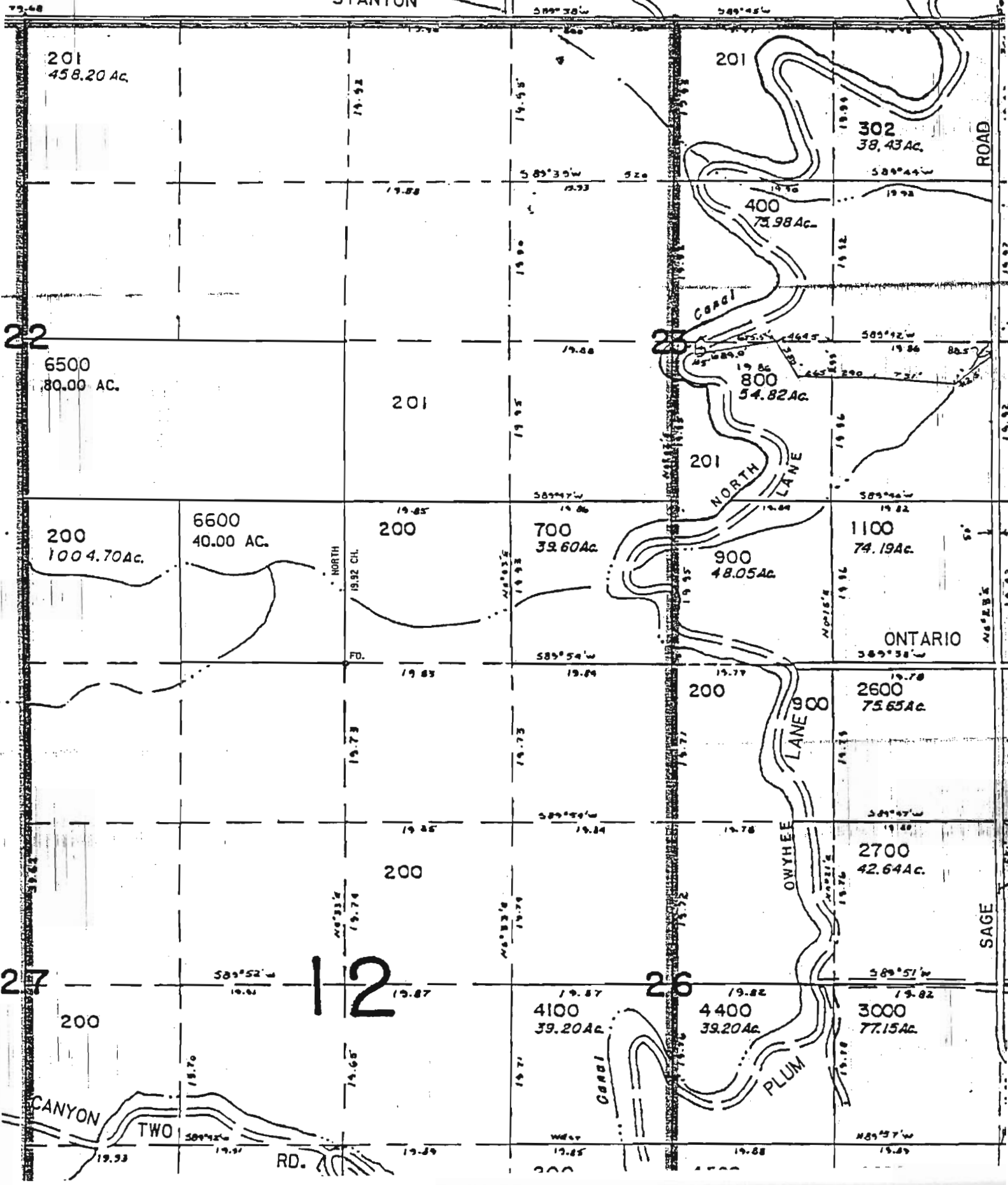


SE1/4 T.17 R.46E. W.M.  
MALHEUR COUNTY

0 1000 2000  
SCALE IN FEET

1" = 1000'  
SEE MAP 17 46

STANTON



201  
458.20 Ac.

201

302  
38.43 Ac.

400  
75.98 Ac.

6500  
80.00 AC.

201

800  
54.82 Ac.

200  
1004.70 Ac.

6600  
40.00 AC.

200

700  
39.60 Ac.

900  
48.05 Ac.

1100  
74.19 Ac.

ONTARIO

200

2600  
75.65 Ac.

200

2700  
42.64 Ac.

200

12

26

4100  
39.20 Ac.

4400  
39.20 Ac.

3000  
77.15 Ac.

CANYON

TWO

RD.

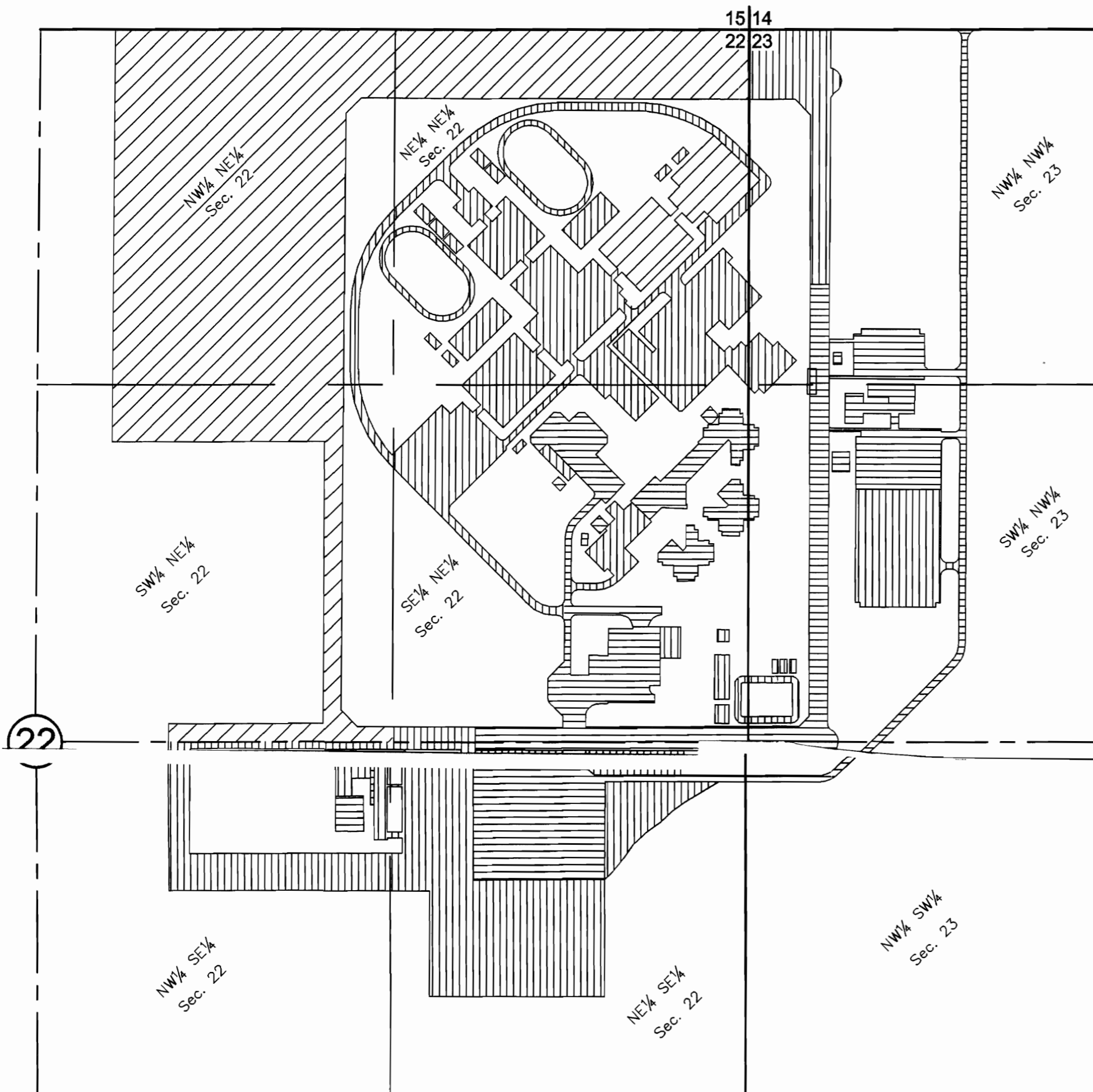
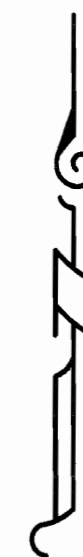
GARDI

PLUM

SAGE  
ROAD

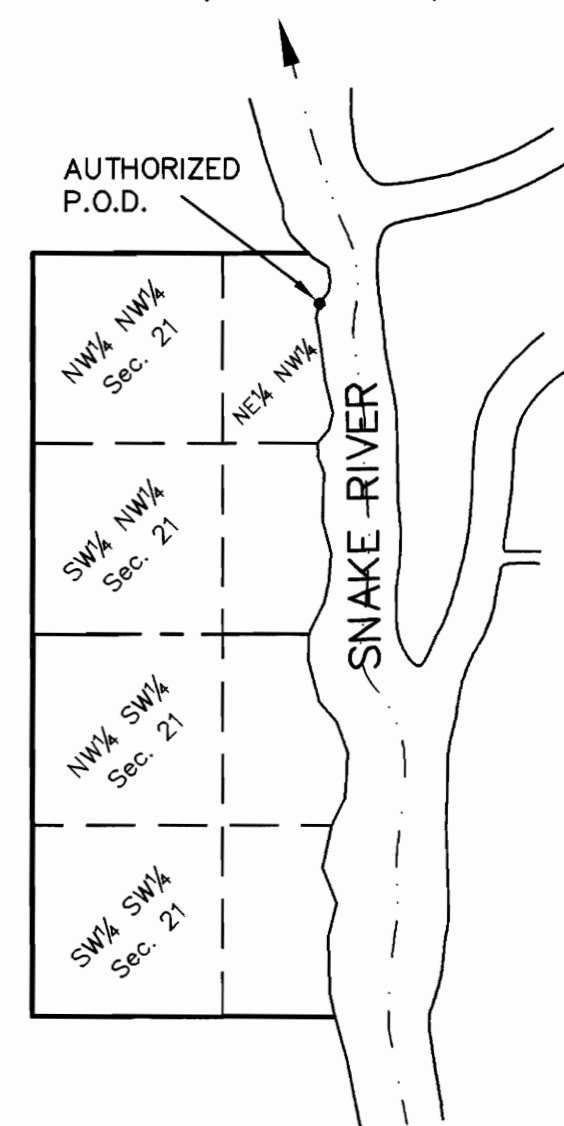
**MAP TO ACCOMPANY APPLICATION  
FOR WATER RIGHT TRANSFER  
FROM OREGON DEPARTMENT OF CORRECTIONS  
TO OREGON WATER RESOURCES DEPARTMENT**

**T. 17 S., R. 46 E., W.M.**



SCALE: 1" = 400'

T. 17 S., R. 47 E., W.M.



"FROM" P.O.D.  
SCALE: 1" = 1320'

Authorized P.O.D. Located  
350' S. & 1980' E. of the  
NW Corner Sec. 21  
T. 17S., R. 47E., W. M.

**LEGEND**

- Phase 1 Lost Water Rights
- Transferred Water Rights to Oregon State Parks and Recreation Dept.
- Transfer Water Rights to Oregon Water Resources Department

1/4 1/4 & Sec.	Available Water Rights (Cert.#75566)	Phase 1 Lost Water Rights	Water Rights Transferred to O.P.R.D.	Water Rights Transfer to Oregon W.R.D.	Remaining Water Rights
NW1/4 NE1/4 Sec.22	39.2	0.0	27.2	0.6	11.4
SW1/4 NE1/4 Sec.22	40.0	0.0	7.2	0.2	32.6
NW1/4 SE1/4 Sec.22	40.0	0.5	0.0	4.5	35.0
NE1/4 NE1/4 Sec.22	39.4	0.0	10.6	12.1	16.7
SE1/4 NE1/4 Sec.22	40.0	8.0	0.0	5.8	26.2
NE1/4 SE1/4 Sec.22	40.0	6.6	0.0	12.4	21.0
NW1/4 NW1/4 Sec.23	39.2	2.6	0.0	3.1	33.5
SW1/4 NW1/4 Sec.23	39.8	5.7	0.0	3.2	30.9
NW1/4 SW1/4 Sec.23	39.8	0.5	0.0	0.0	39.3

**Snake River Correctional Institution  
Malheur County  
December 18, 2001  
Amended October 14, 2002**

