

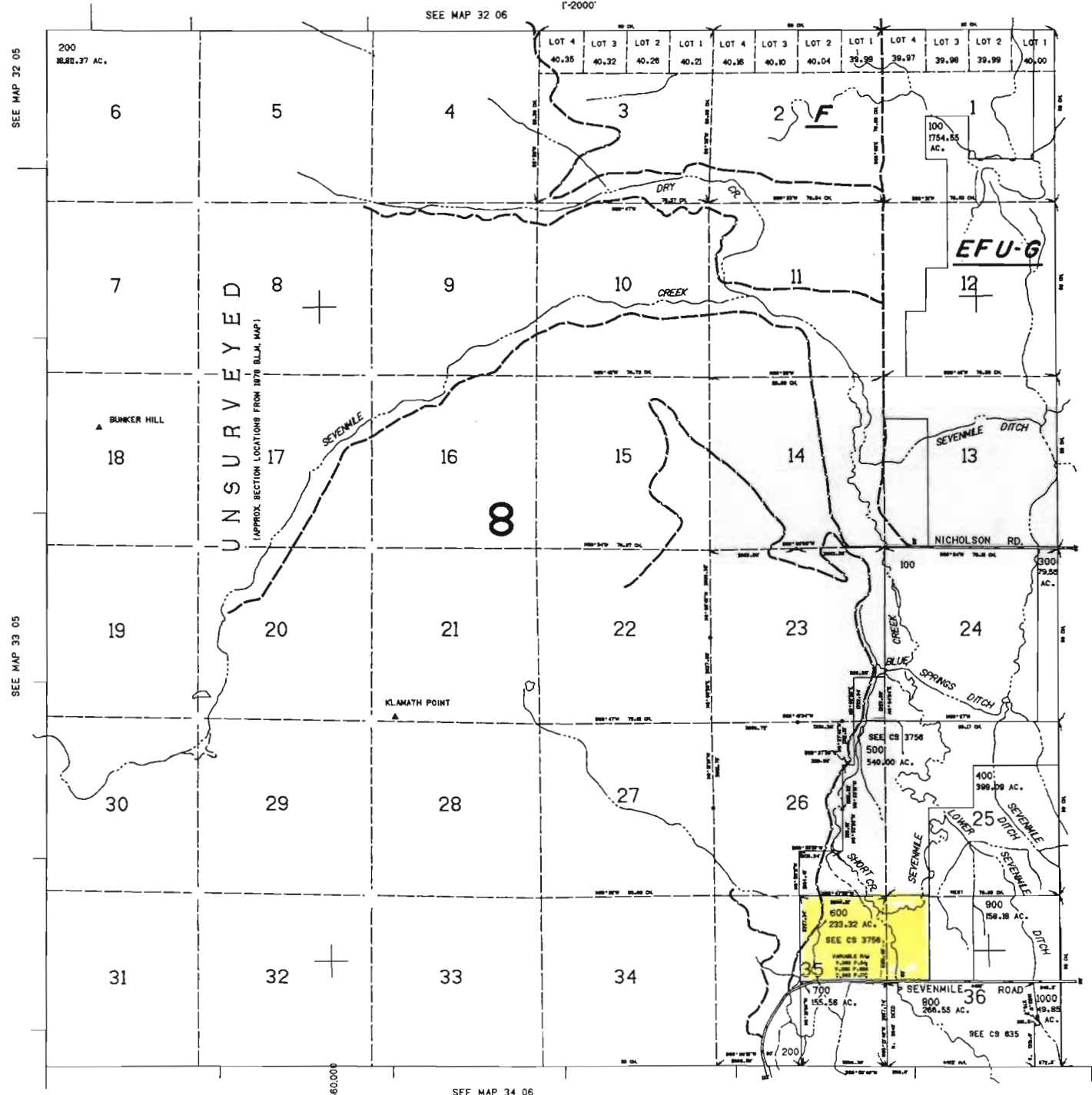
THIS MAP WAS PREPARED FOR ASSESSMENT PURPOSE ONLY.

T.33S. R.06E. W.M.
KLAMATH COUNTY

33 06

RECEIVED
JUN 27 2002
WATER RESOURCES DEPT
SALEM, OREGON

ATTACHMENT 1
SUBJECT PARCEL



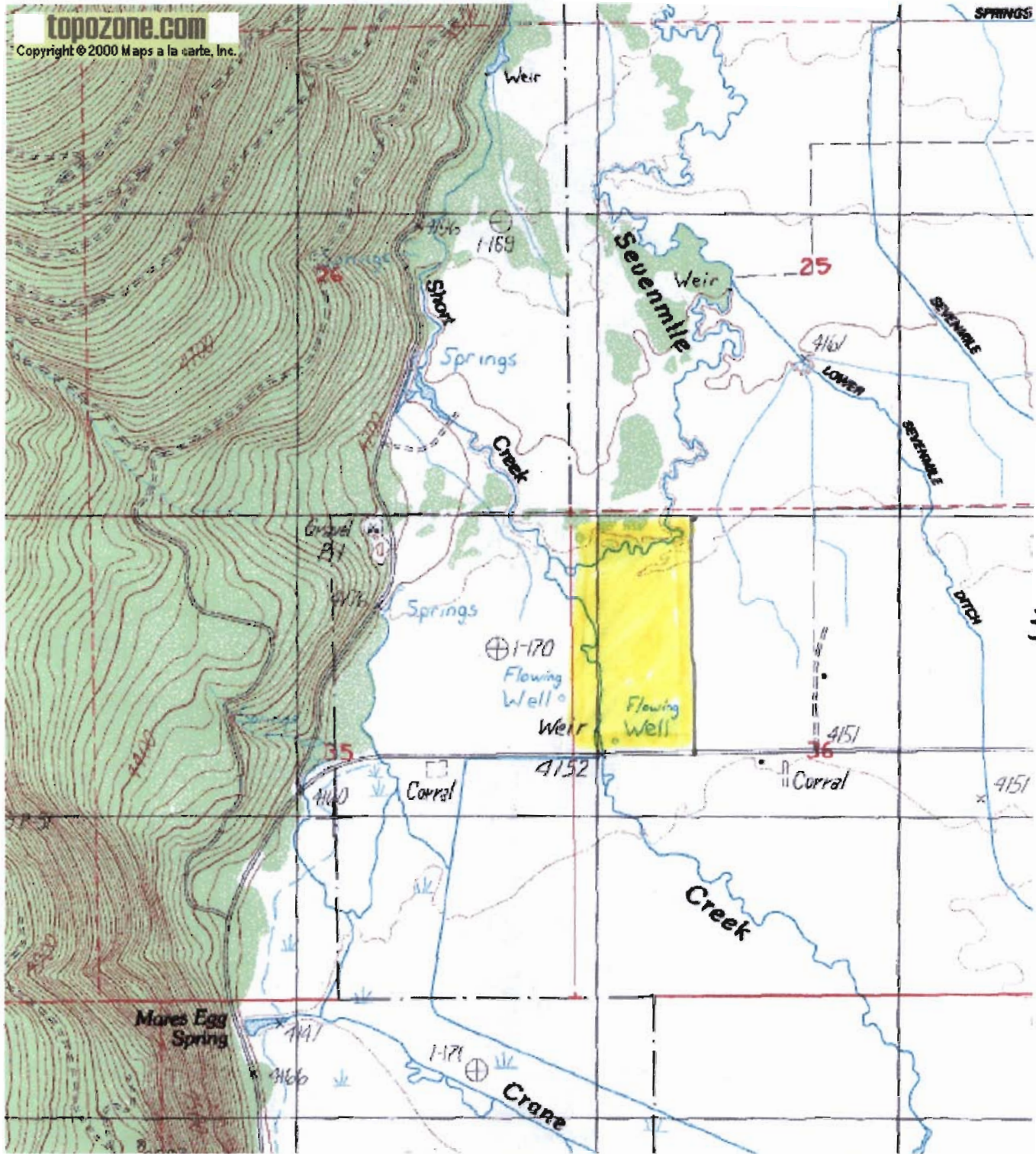


ATTACHMENT 3
CERT. NO. 10927

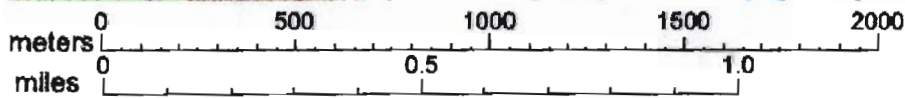
RECEIVED
JUN 27 2002
WATER RESOURCES DEPT
SALEM, OREGON

Map
center


MARE'S EGG SPRING QUAD



33S



06E

 - FOLLOWED
AREA



ATTACHMENT 2
CERT. No. 10928

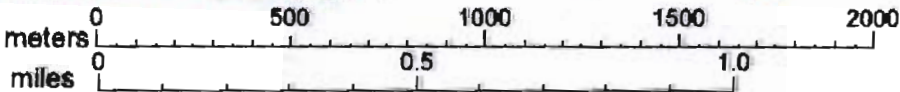
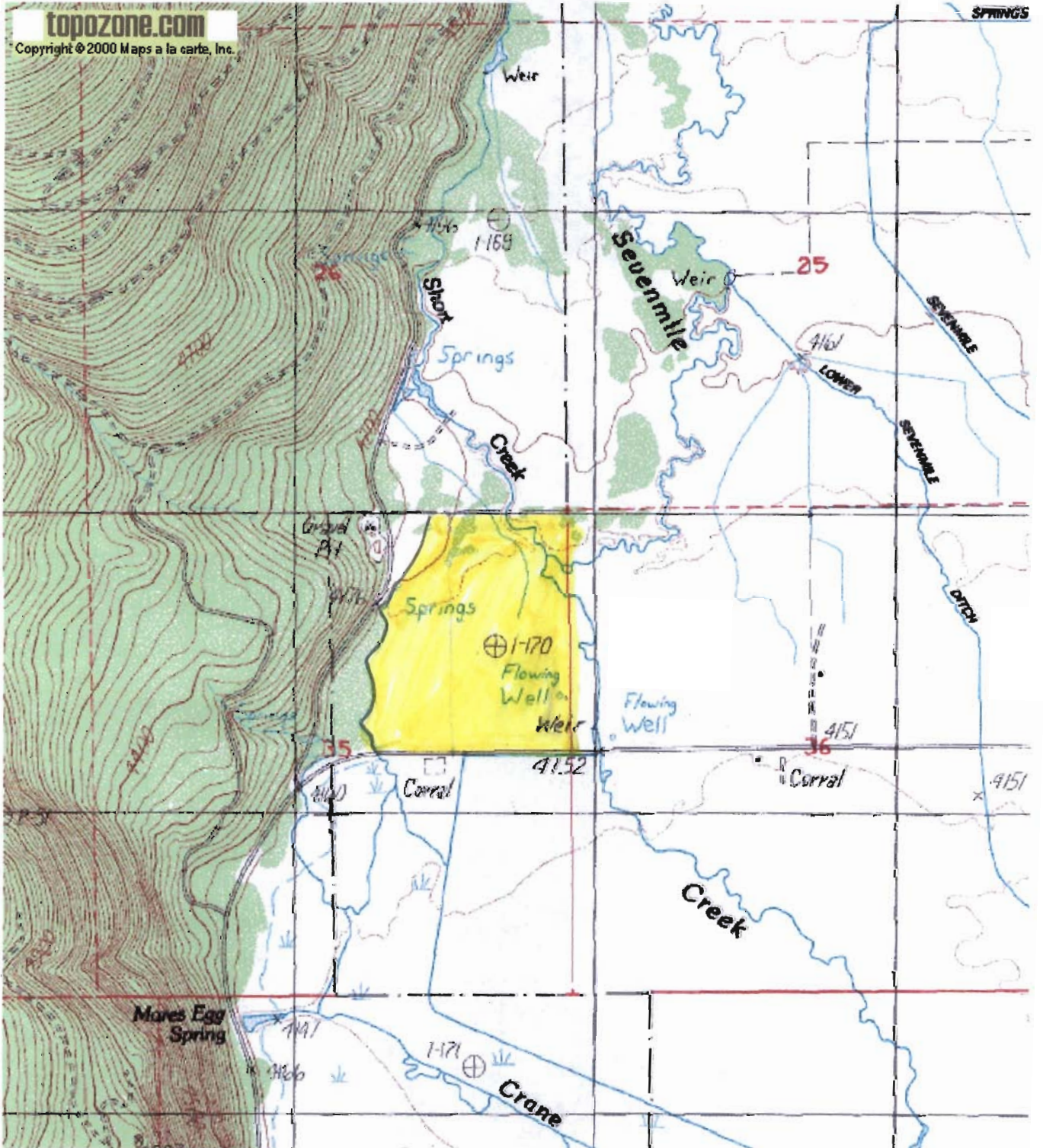
RECEIVED

JUN 27 2002


WATER RESOURCES DEPT
SALEM, OREGON

Map
center

MARE'S EGG SPRING QUAD



06 E

 - FALLOWED AREA