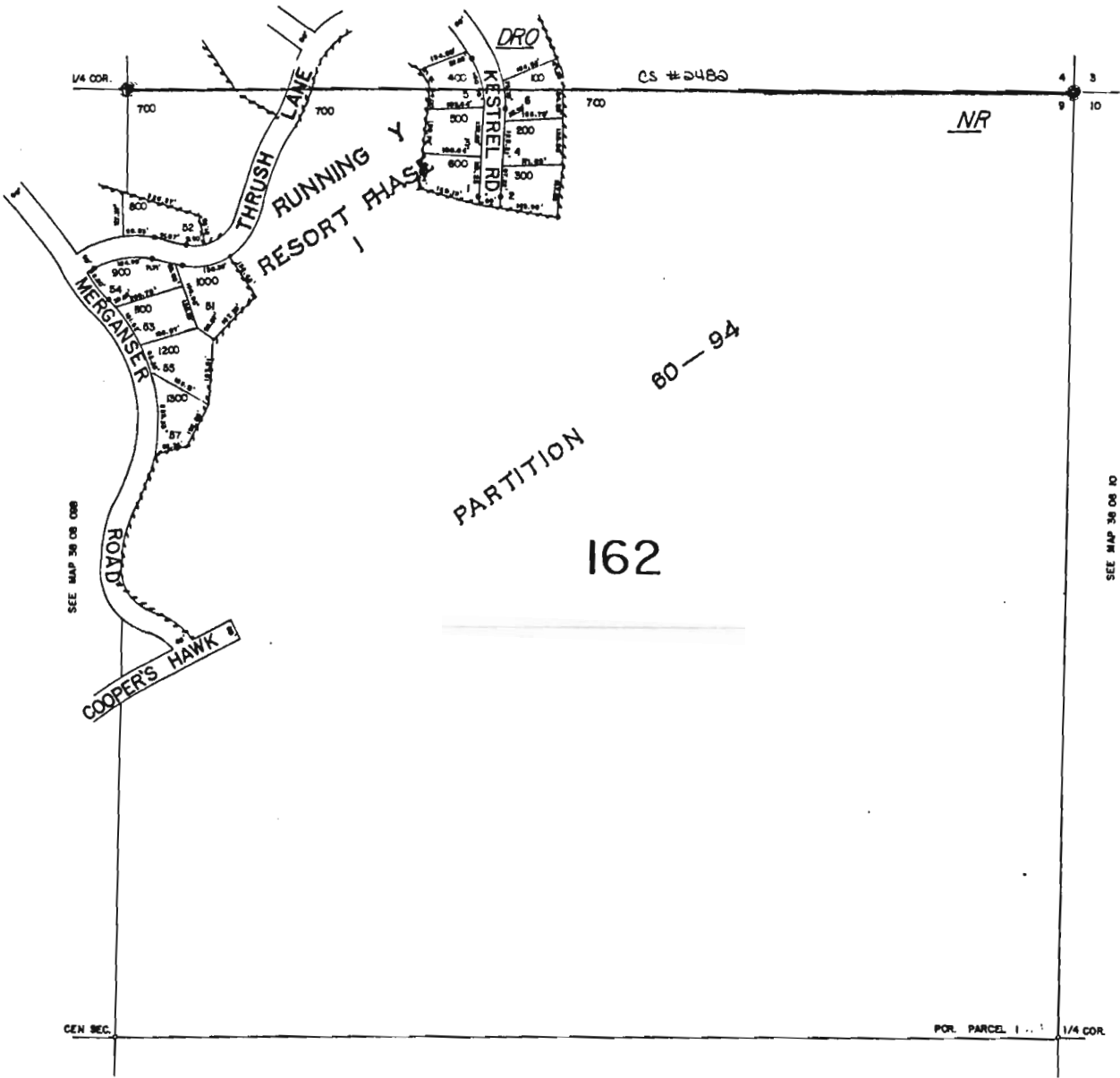


NE 1/4 SEC. 09 T.38S. R.09E. W.M.
KLAMATH COUNTY

38 08 09A



SEE MAP 36 08 089

SEE MAP 36 08 090

SEE MAP 36 08 090

38 08 09A

RECEIVED
 MAR 14 2001
 WATER RESOURCES DEPT.
 SALEM, OREGON

SE 1/4 SEC. 09 T.38S. R.08E. W.M.
KLAMATH COUNTY

38 08 09D

1/200'

SEE MAP 38 08 9A

1/4 COR.

CEN SEC.

100

NR

#SB16

RUNNING Y
RESORT PHASE

60-94

DRO

PARTITION

162

COOPERS

HAWK

ROAD

RUNNING Y

STATE HWY 140

1/4 COR.

SEE MAP 38 08

POR. PARCEL 1 9 10

16 15

SEE MAP 38 08

38 08 09D

RECEIVED

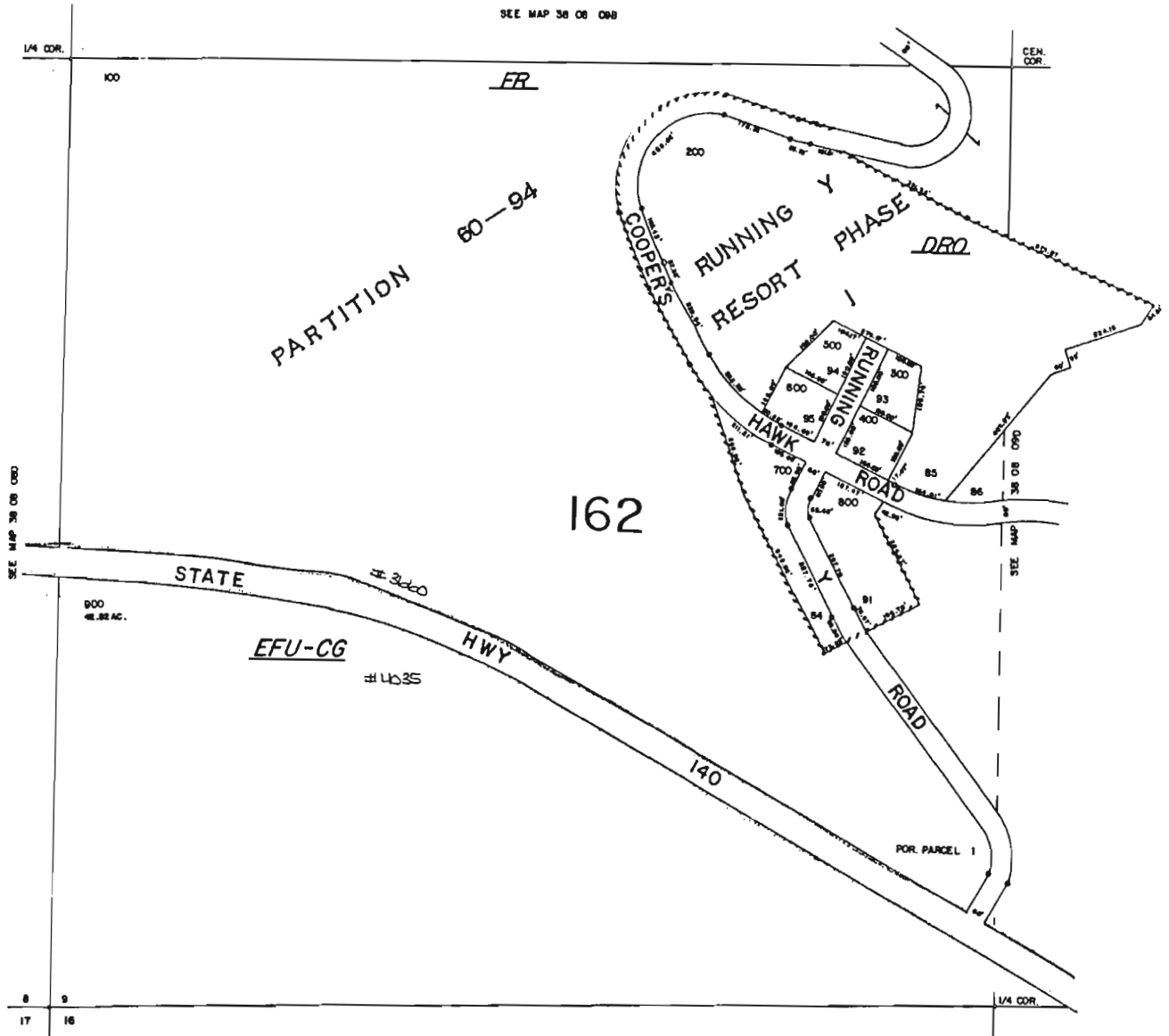
MAR 14 2001

WATER RESOURCES DEPT.
SALEM, OREGON

SW1/4 SEC. 09 T.38S. R.08E. W.M.
KLAMATH COUNTY
1" = 200'

38 08 09C

SEE MAP 38 08 09B



SEE MAP 38 08 018

38 08 09C

RECEIVED

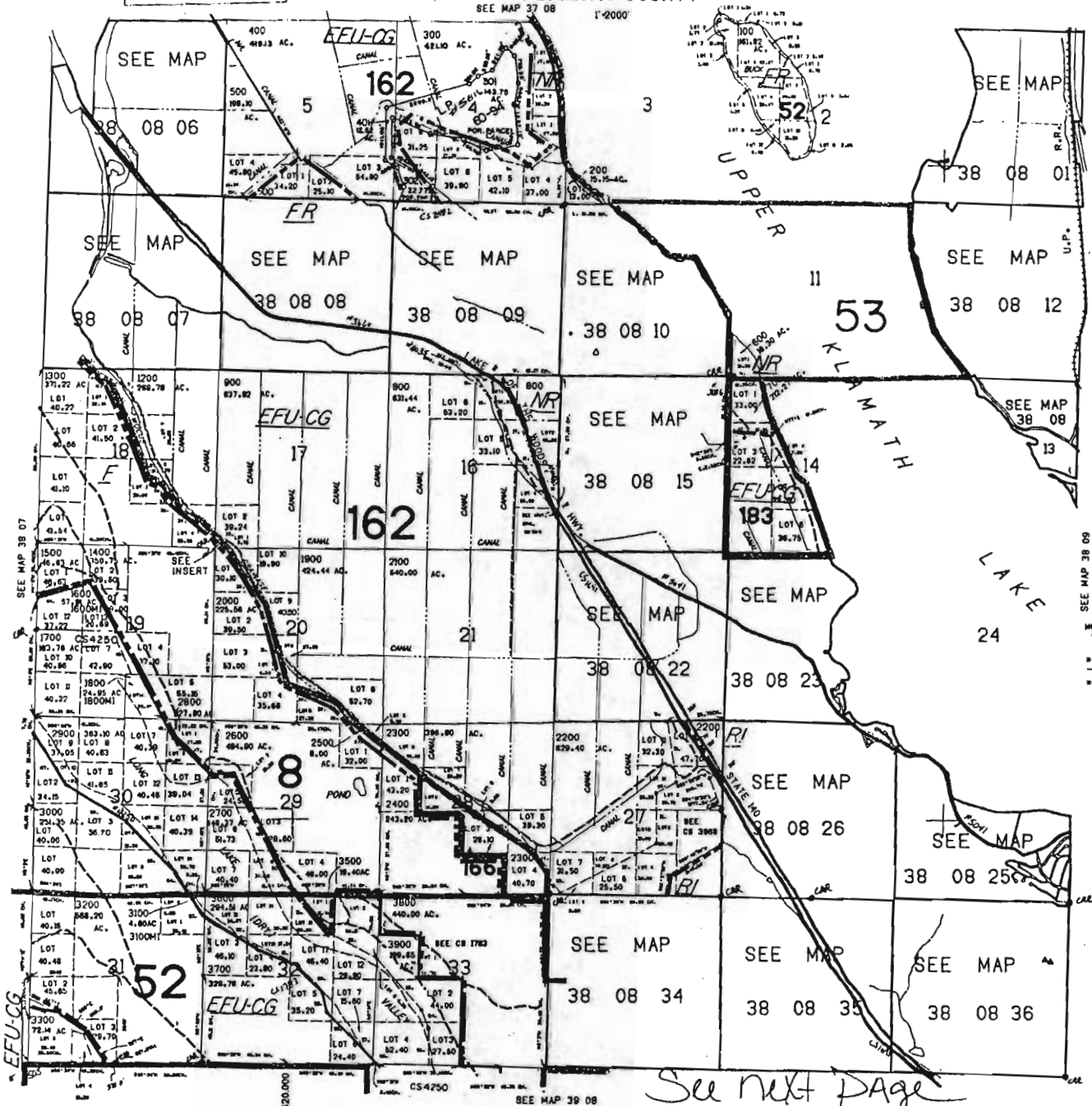
MAR 14 2001

WATER RESOURCES DEPT.
SALEM, OREGON

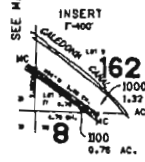
THIS MAP WAS PREPARED FOR ASSESSMENT PURPOSE ONLY.

T.38S. R.08E. W.M. KLAMATH COUNTY

38 08 & INDEX



- 1858 MEANDER LINE
- 1. 21176.00 AC.
 - 2. 21176.00 AC.
 - 3. 21176.00 AC.
 - 4. 21176.00 AC.
 - 5. 21176.00 AC.
 - 6. 21176.00 AC.
 - 7. 21176.00 AC.
 - 8. 21176.00 AC.
 - 9. 21176.00 AC.
 - 10. 21176.00 AC.
 - 11. 21176.00 AC.
 - 12. 21176.00 AC.
 - 13. 21176.00 AC.
 - 14. 21176.00 AC.
 - 15. 21176.00 AC.
 - 16. 21176.00 AC.
 - 17. 21176.00 AC.
 - 18. 21176.00 AC.
 - 19. 21176.00 AC.
 - 20. 21176.00 AC.
 - 21. 21176.00 AC.
 - 22. 21176.00 AC.
 - 23. 21176.00 AC.
 - 24. 21176.00 AC.
 - 25. 21176.00 AC.
 - 26. 21176.00 AC.
 - 27. 21176.00 AC.
 - 28. 21176.00 AC.
 - 29. 21176.00 AC.
 - 30. 21176.00 AC.
 - 31. 21176.00 AC.
 - 32. 21176.00 AC.
 - 33. 21176.00 AC.
 - 34. 21176.00 AC.
 - 35. 21176.00 AC.
 - 36. 21176.00 AC.



210,000

38 08 & INDEX

RECEIVED

MAR 14 2001

WATER RESOURCES DEPT. SALEM, OREGON