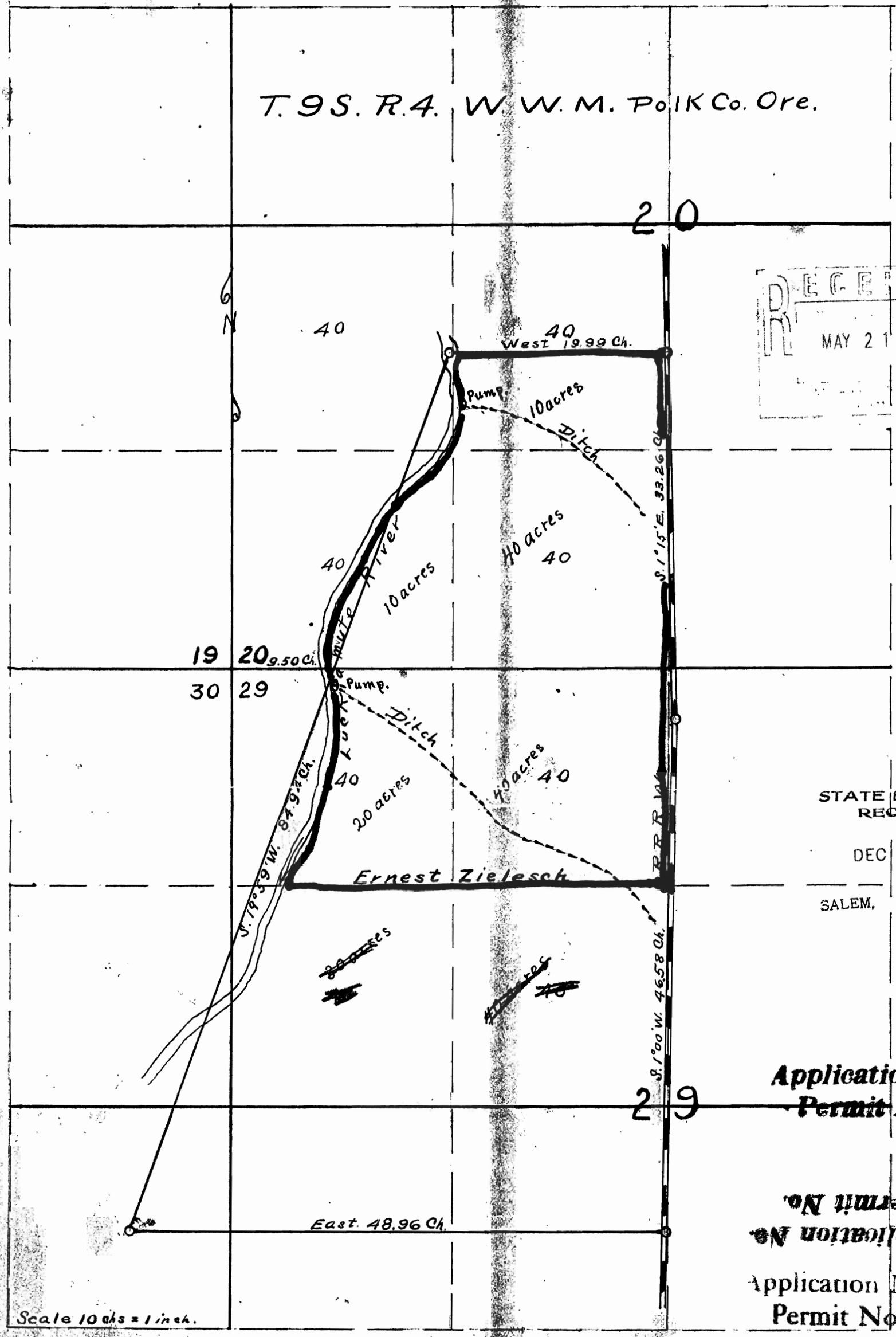


EX.D

2012

T. 9 S. R. 4. W. W. M. Polk Co. Ore.

8502



RECEIVED
MAY 21 2001

STATE ENGINEER
RECEIVED
DEC 30 1922
SALEM, OREGON

Application No 870
Permit No. 5732

Application No. 12330
Permit No. 8689

J. Howe
County Surveyor
Polk Co. Ore.

8502