

Swalley Irrigation District

Heath - 1612160001701



- District Boundary
- Road Labels
- Township Range
- Sections
- Section Labels
- Quarters
- Quarter Labels
- Quarter Quarters
- Quarter Quarter Labels
- Lot Labels
- Taxlots
- Private Line
- Canal All
- Canal Open
- Canal Piped
- Place of Use Hatch
- Place of Use Fill
- Rivers

Leased Instream
10.0 acres

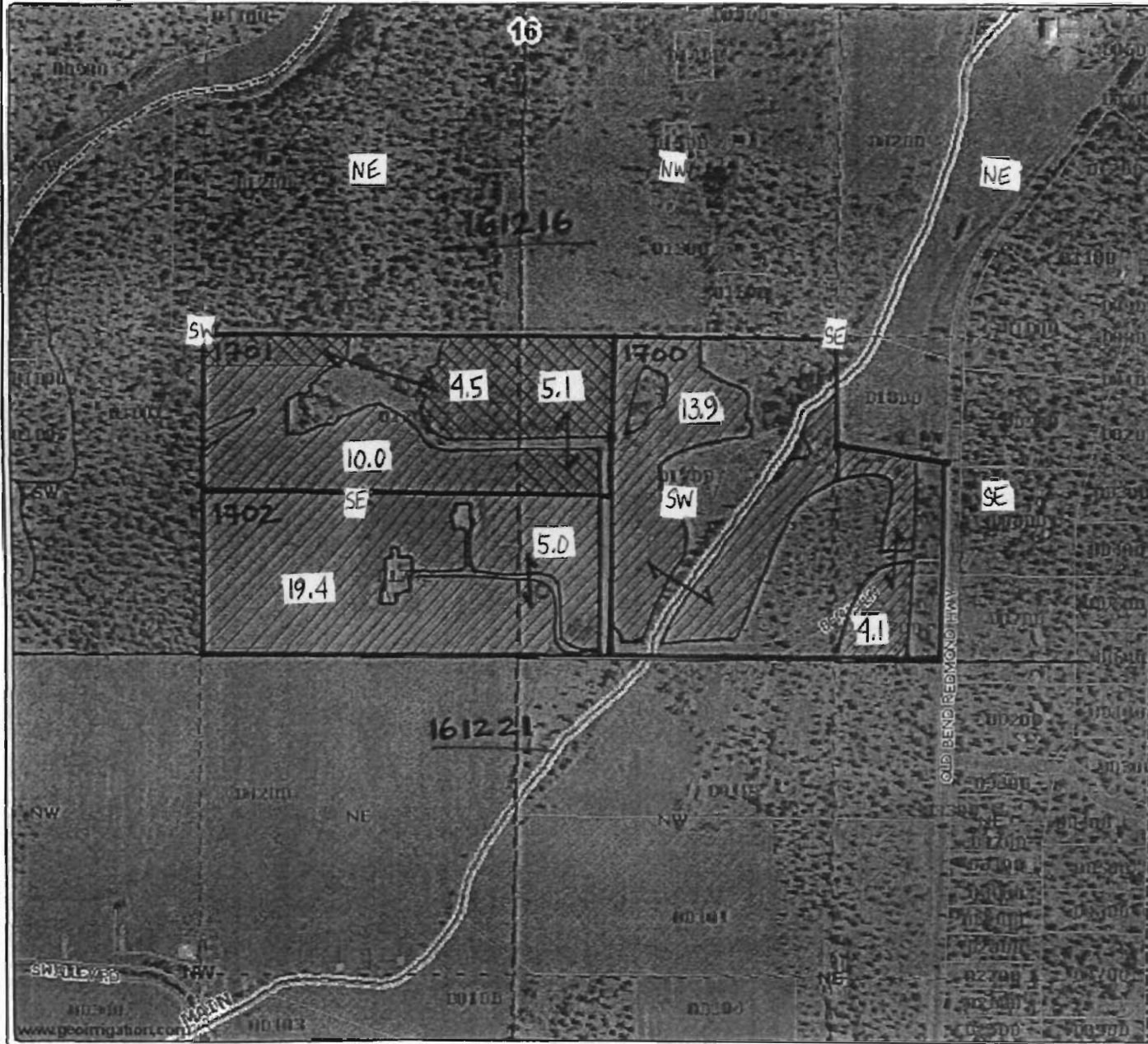
Remaining
9.6 acres

Scale 1" = 600'
Created: 5/15/2008


DISCLAIMER: This map is intended for display purposes only and is not intended for any legal representations. There are no warranties, expressed or implied, that accompany this product.


Swalley Irrigation District


Heath - 1612160001701



- District Boundary
- Road Labels
- Township Range
- Sections
- Section Labels
- Quarters
- Quarter Labels
- Quarter Quarters
- Quarter Quarter Labels
- Lot Labels
- Taxlots
- Private Line
- Canal All
- Canal Open
- Canal Piped
- Place of Use Hatch
- Place of Use Fill
- Rivers

 Leased
Instream
9.6 ac

 Remaining
10.0 ac

 Scale 1" = 500'
Created: 4/4/2008
RECEIVED

DISCLAIMER: This map is intended for display purposes only and is not intended for any legal representations. There are no warranties, expressed or implied, that accompany this product.

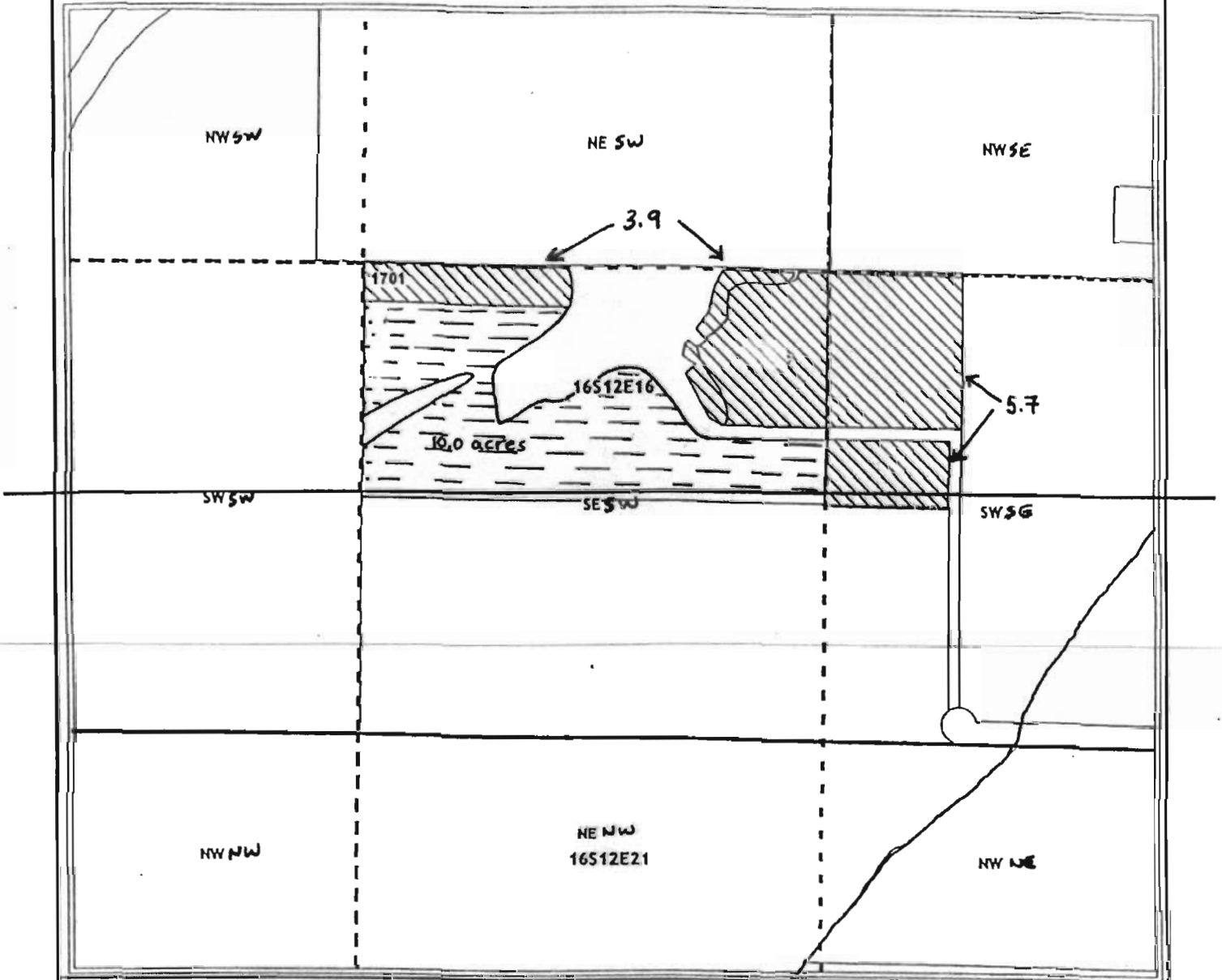
SuperSealed

MAY 15 2008
WATER RESOURCES DEPT.
SALEM, OREGON

INSTREAM LEASE MAP

T16S. R12E. SECTION 16



Super Seal



RECEIVED APPLICATION FOR INSTREAM LEASE

MAY 07 2008

WATER RESOURCES DEPT.
SALEM, OREGON

for
Heath, Jeffrey M. & Susan C. 9.6 ac Remaining 
Tax Lot 1701 -19.6 Acres 10.0 ac Instream 



Geo-Spatial Solutions, Inc.
www.geospatialolutions.com

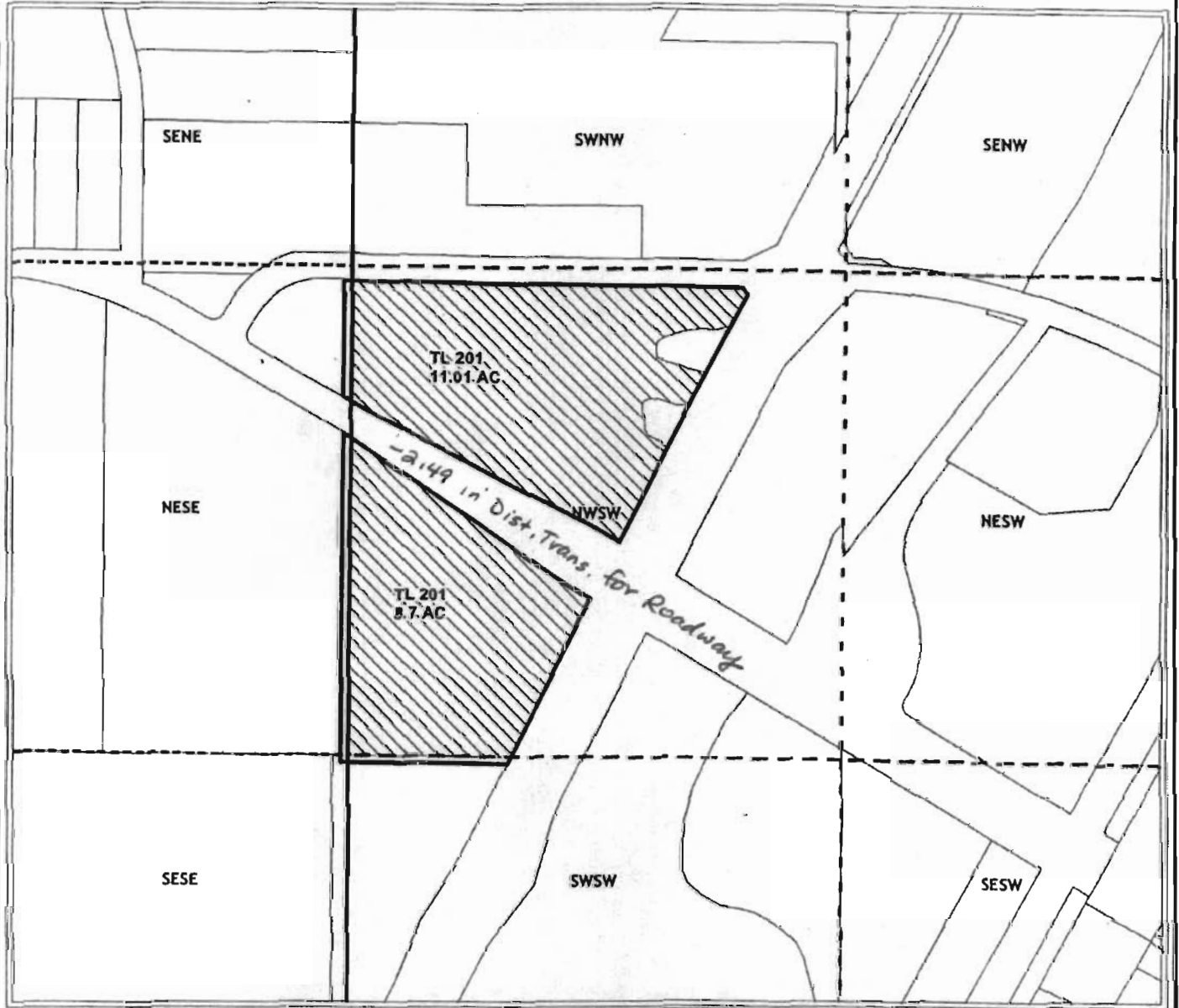
Date Created: April 14, 2004



1 inch equals 400 feet

INSTREAM LEASE MAP

T16S. R12E. SECTION 26



RECEIVED

MAY 07 2008

WATER RESOURCES DEPT.
SALEM, OREGON

APPLICATION FOR INSTREAM LEASE

for

Aceti, Anthony

Tax Lot 201 - 19.71 Acres
(11.01 ac + 8.7ac = 19.71ac)

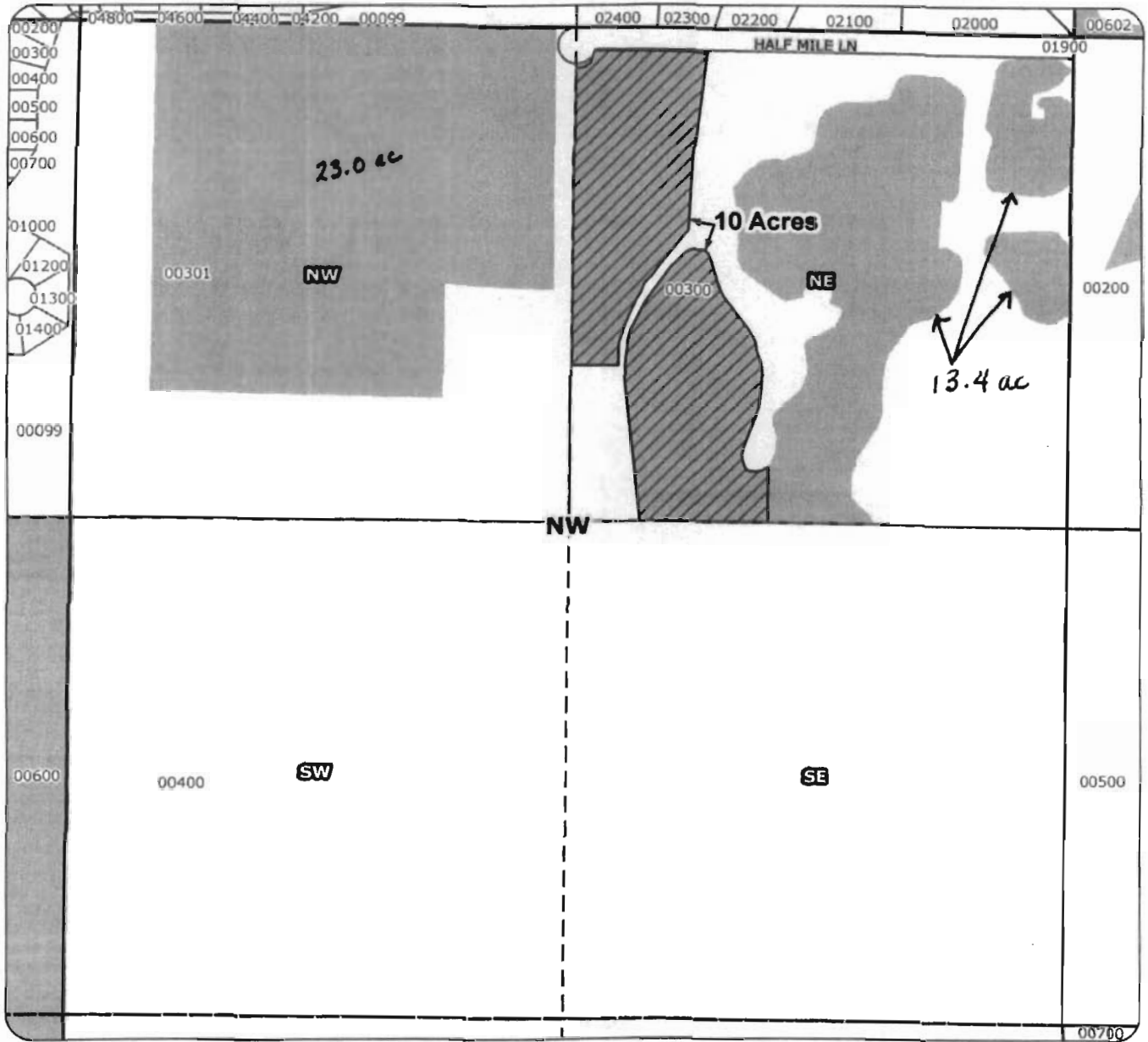


Geo-Spatial Solutions, Inc.





1 inch equals 400 feet

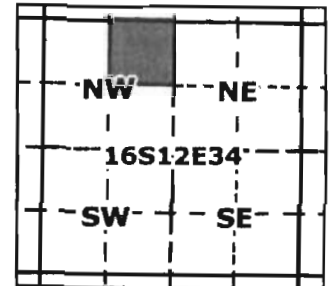
2008 Swalley Irrigation District Instream Lease Map



Application for Instream Lease

-  Proposed Lease of Irrigation Rights
-  Water Rights

for
 Bill Watson
 taxlot 300- 10 acres
 in 161234NENW
 Total lease of
 10 acres



RECEIVED

MAY 07 2008

WATER RESOURCES DEPT.
 SALEM, OREGON



1 inch equals 400 feet

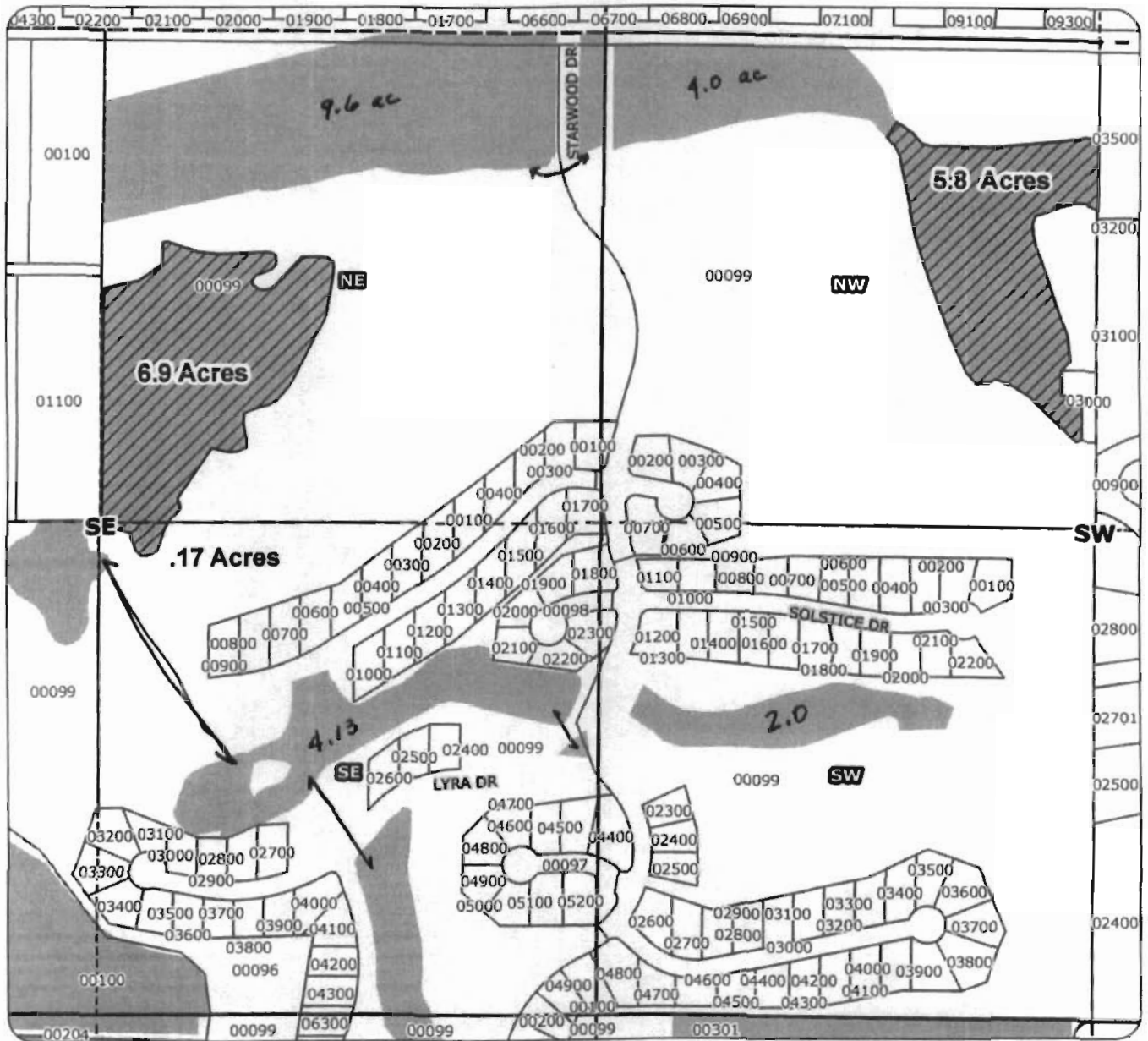


Geo-Spatial Solutions, Inc.

www.geospatialsolutions.com

Date Created: March 2008

2008 Swalley Irrigation District Instream Lease Map



Application for Instream Lease

for

Starwood Homeowner's Association

taxlot 99- 5.8 acres

in 161227NSW

taxlot 99- 6.9 acres

in 161228NESE

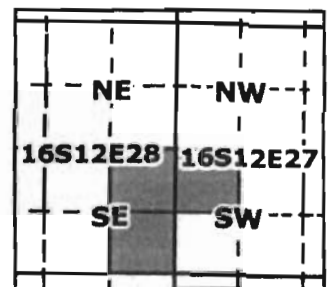
taxlot 99- .17 acres



in 161228SESE

Total lease of

12.87 acres

Date Created: march 2008



-  Proposed Lease of Irrigation Rights
-  Water Rights



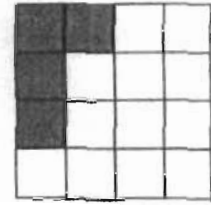
Geo Spatial Solutions, Inc
www.geospatialsolutions.com

RECEIVED ↑ N
1 INCH equals 400 feet

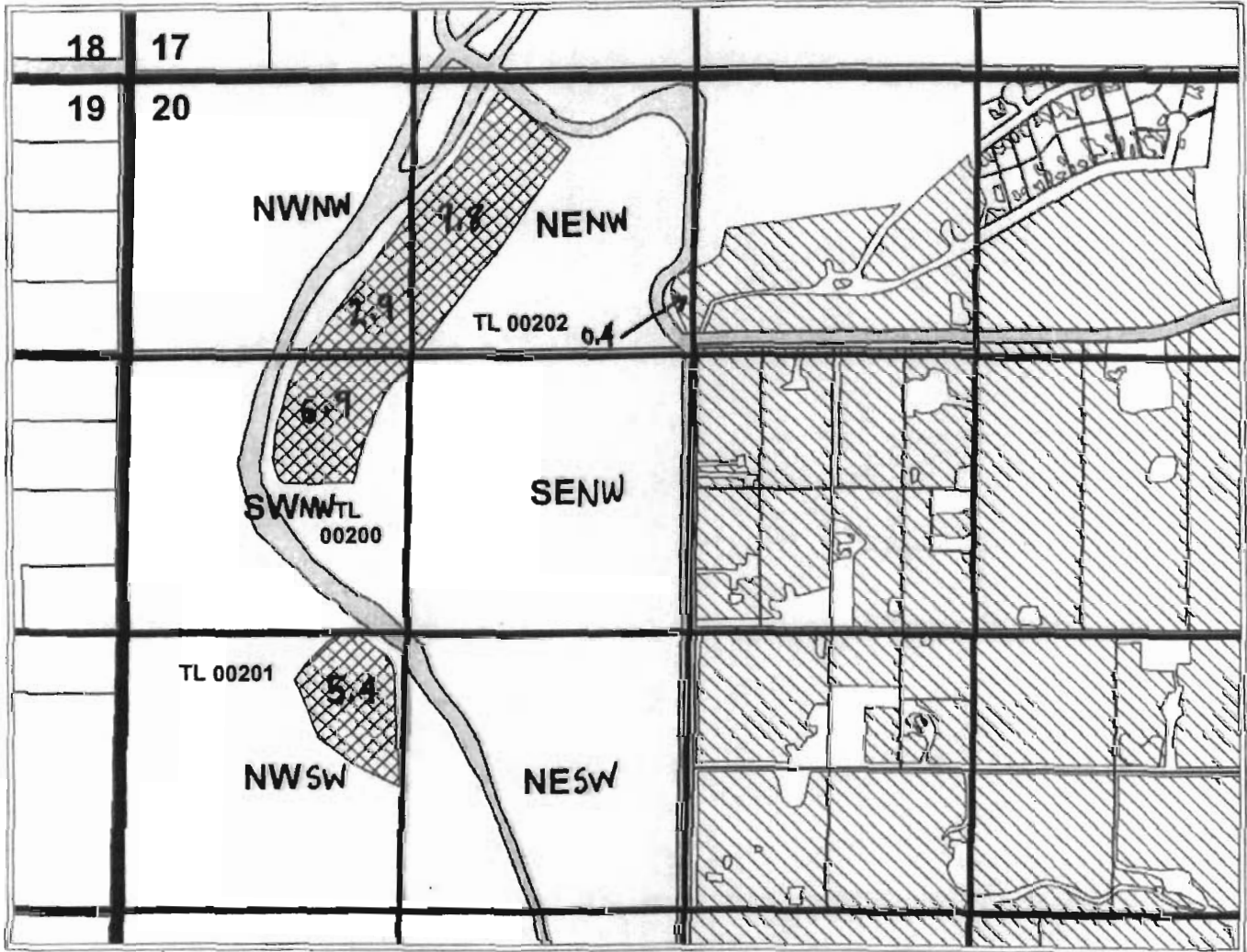
MAY 07 2008

WATER RESOURCES DEPT.
SALEM, OREGON

SWALLEY IRRIGATION DISTRICT INSTREAM LEASE MAP


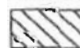


16S12E20



APPLICATION FOR INSTREAM LEASE FOR

- C L R, INC. (TL 00202) - 12.70 ACRES
- C L R, INC. (TL 00200) - 6.90 ACRES
- C L R, INC. (TL 00201) - 5.40 ACRES

-  — PROPOSED LEASE WATER
-  — EXISTING WATER



1" = 750'

Date: 05/23/03

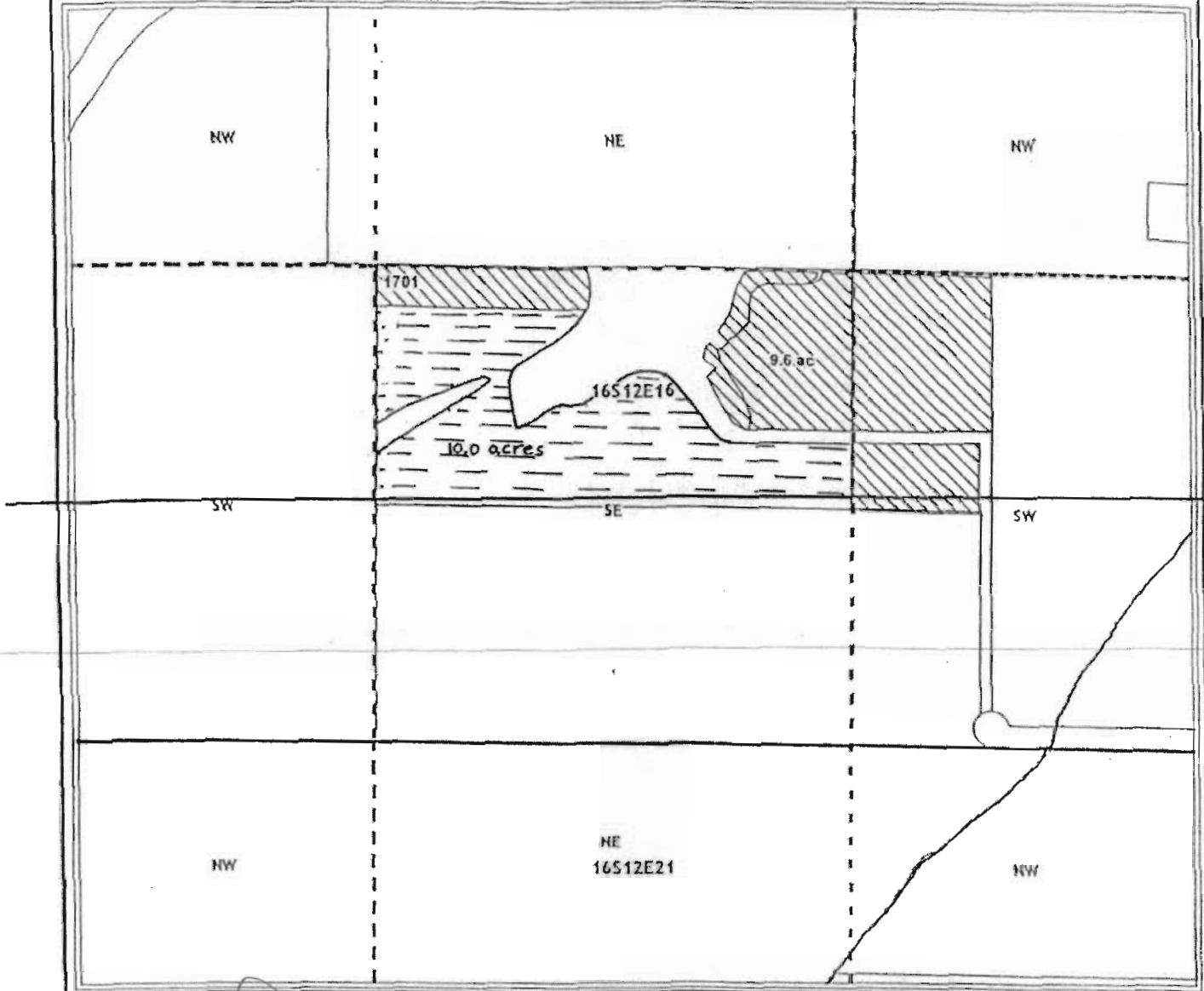
Geo-Spatial Solutions, Inc.
www.geospatialsolutions.com

RECEIVED

MAY 07 2003

WATER RESOURCES DEPT.
SALEM, OREGON


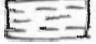
INSTREAM LEASE MAP
T16S. R12E. SECTION 16



50 feet geodetic

APPLICATION FOR INSTREAM LEASE

for

Heath, Jeffrey M. & Susan C. 9.6 ac Remaining 
Tax Lot 1701 -19.6 Acres 10.0 ac Instream 



Geo-Spatial Solutions, Inc.
www.geospatialolutions.com

Date Created: April 14, 2004



1 inch equals 400 feet

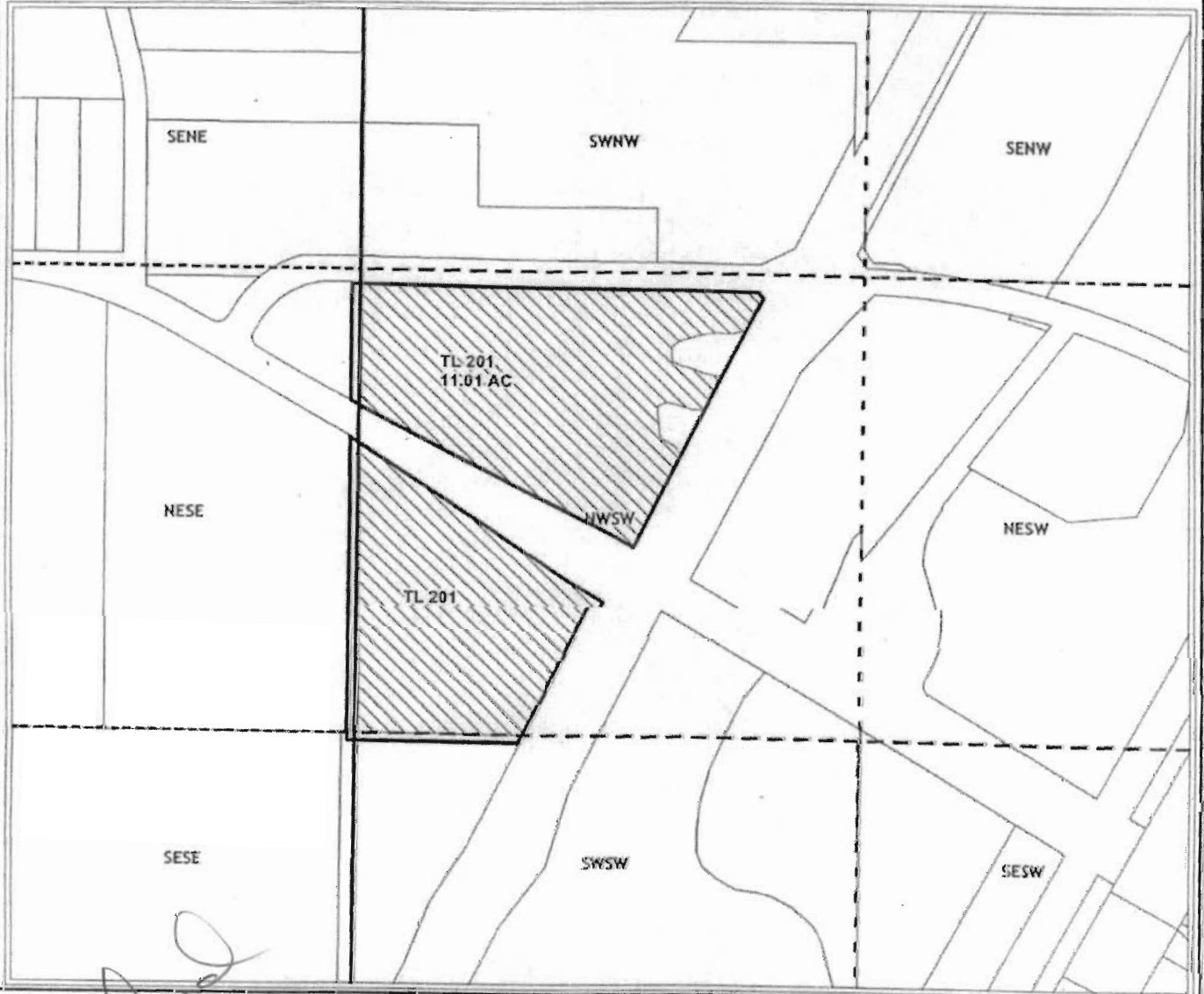
RECEIVED

APR 10 2008

WATER RESOURCES DEPT.
SALEM, OREGON

INSTREAM LEASE MAP

T16S. R12E. SECTION 26



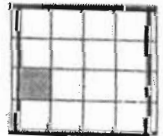
Superseded

APPLICATION FOR INSTREAM LEASE

for

Aceti, Anthony

Tax Lot 201 - 19.71 Acres
(11.01 ac + 8.7ac = 19.71ac)



Geo-Spatial Solutions, Inc.

www.geospatialolutions.com

Date Created: March 22, 2005



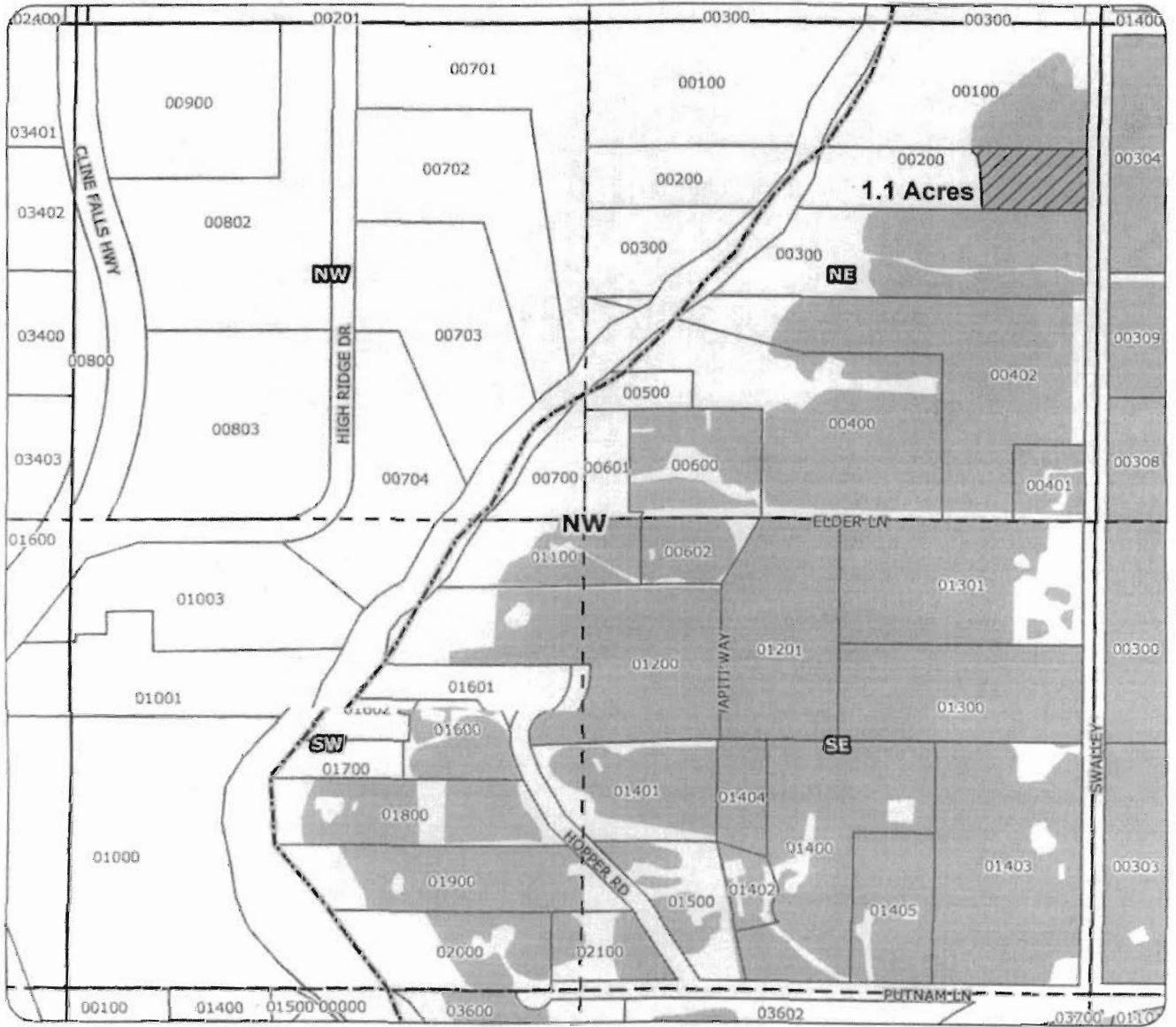
1 inch equals 400 feet

RECEIVED

APR 10 2008



WATER RESOURCES DEPT.
SALEM, OREGON

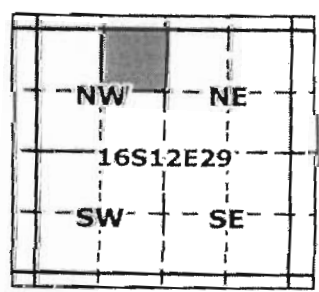
2008 Swalley Irrigation District Instream Lease Map



Application for Instream Lease

for
 Jeffrey Frank
 taxlot 200- 1.1 acres
 in 161229NENW
 Total lease of
 1.1 acres

-  Proposed Lease of Irrigation Rights
-  Water Rights



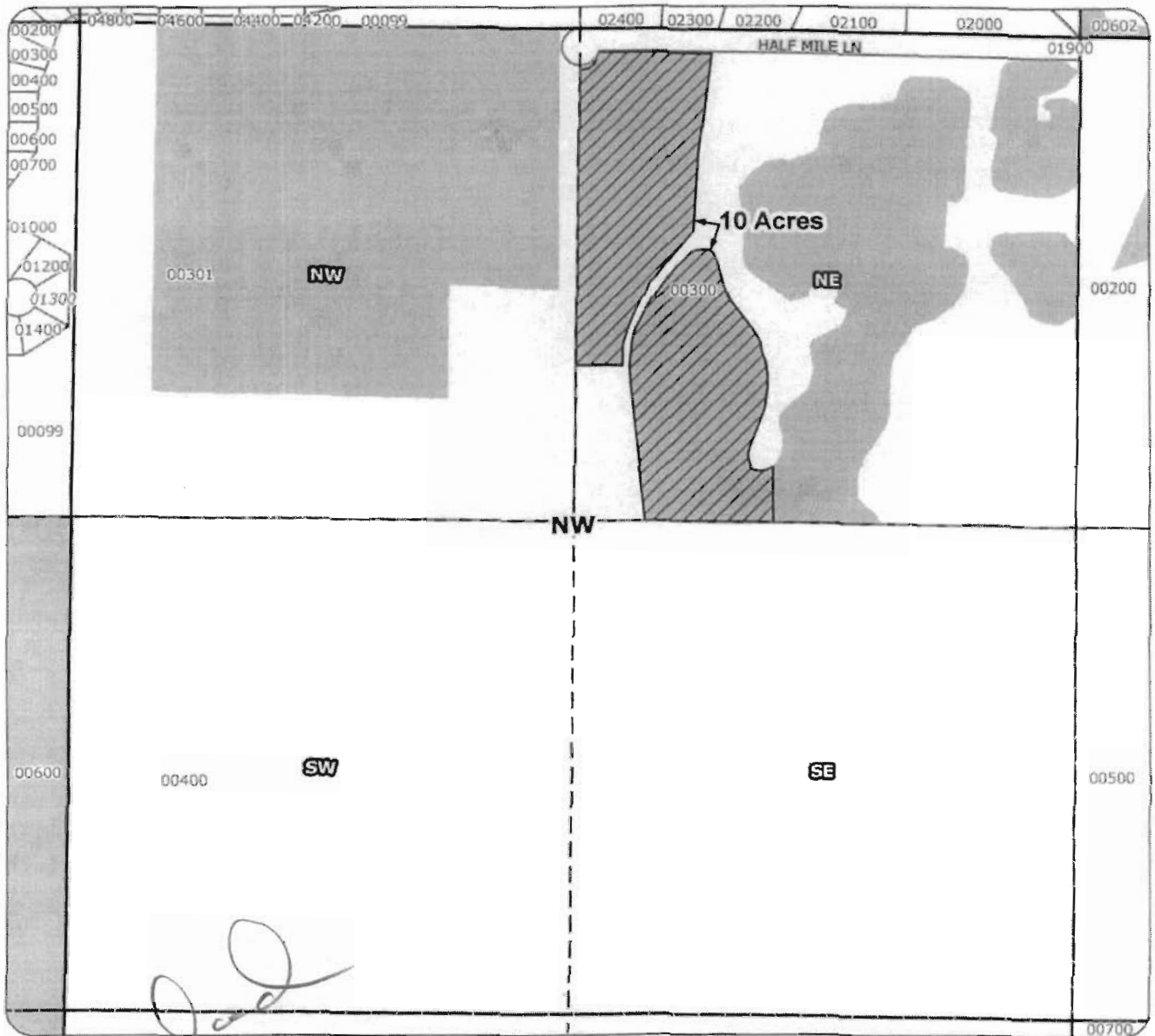
Geo-Spatial Solutions, Inc.
www.geospatialolutions.com

Date Created: March 2008

RECEIVED ↑ N
 1 inch equals 400 feet

APR 10 2008
 WATER RESOURCES DEPT.
 SALEM, OREGON

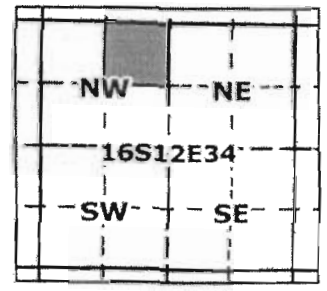
2008 Swalley Irrigation District Instream Lease Map





50 Acres Shaded

Application for Instream Lease

for
 Bill Watson
 taxlot 300- 10 acres
 in 161234NENW
 Total lease of
 10 acres



-  Proposed Lease of Irrigation Rights
-  Water Rights



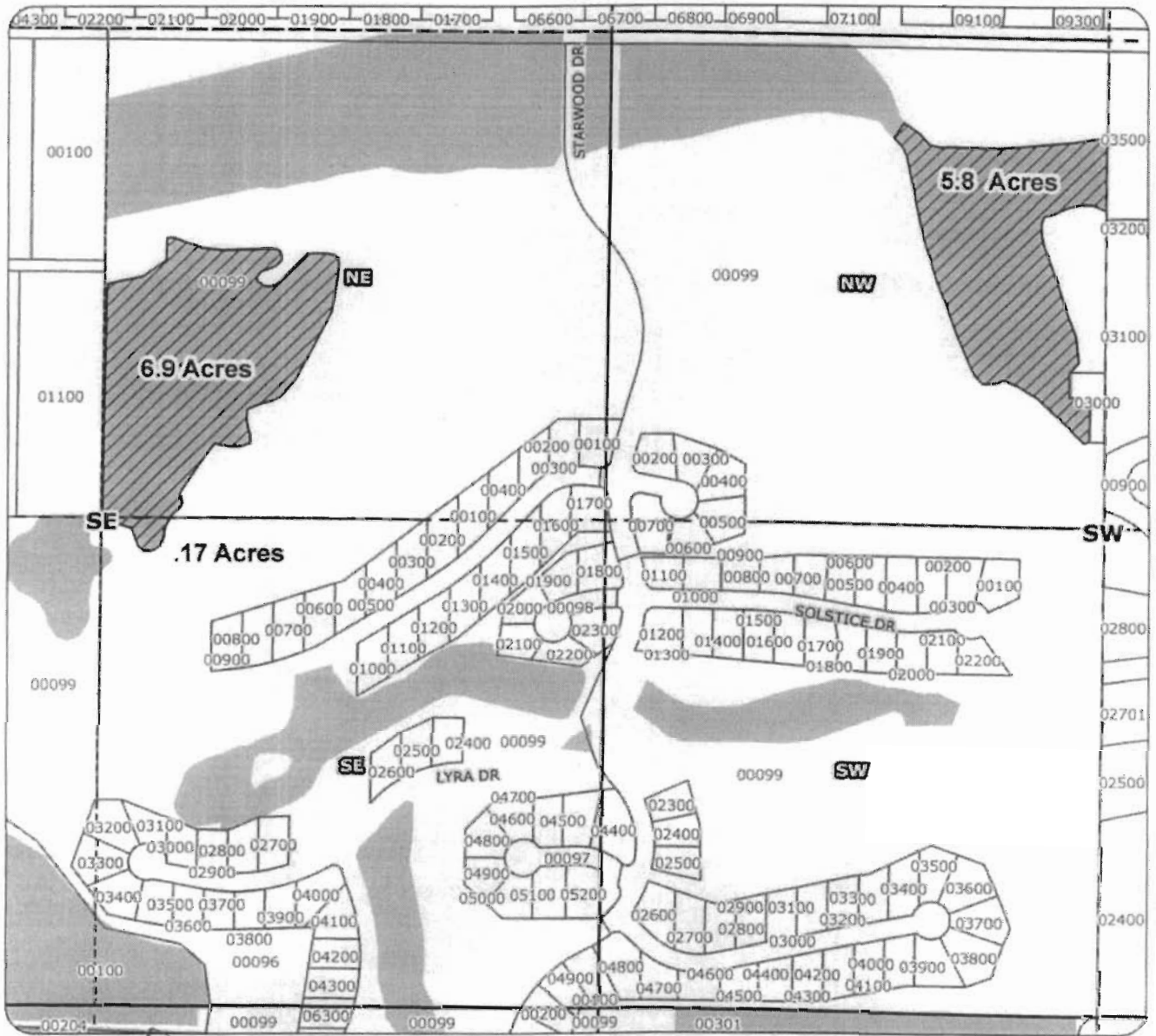
Geo-Spatial Solutions, Inc.
www.geospatialolutions.com

Date Created: March 2008

RECEIVED 
 1 inch equals 400 feet

APR 10 2008
 WATER RESOURCES DEPT.
 SALEM, OREGON

2008 Swalley Irrigation District Instream Lease Map



Super section

Application for Instream Lease

for

Starwood Homeowner's Association

taxlot 99- 5.8 acres

in 161227NWSW

taxlot 99- 6.9 acres

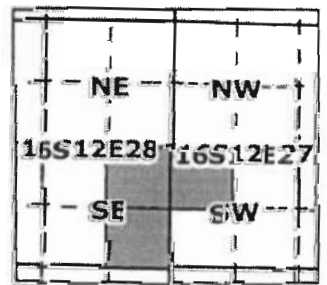
in 161228NESE



taxlot 99- .17 acres

in 161228SESE

Total lease of

12.87 acres



-  Proposed Lease of Irrigation Rights
-  Water Rights



Geo-Spatial Solutions, Inc.

www.geospatialsolutions.com

Date Created: March 2008

↑ N
RECEIVED
1 inch equals 400 feet



APR 10 2008

WATER RESOURCES DEPT.
SALEM, OREGON

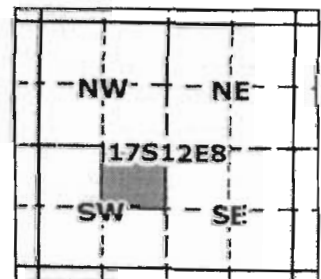
2008 Swalley Irrigation District Instream Lease Map



Application for Instream Lease

-  Proposed Lease of Irrigation Rights
-  Water Rights

for
 Betty Hendrix
 taxlot 300- 8.0 acres
 in 171208NESW
 Total lease of
 8.0 acres



Geo-Spatial Solutions, Inc.
www.geospatialsolutions.com

Date Created: March 2008

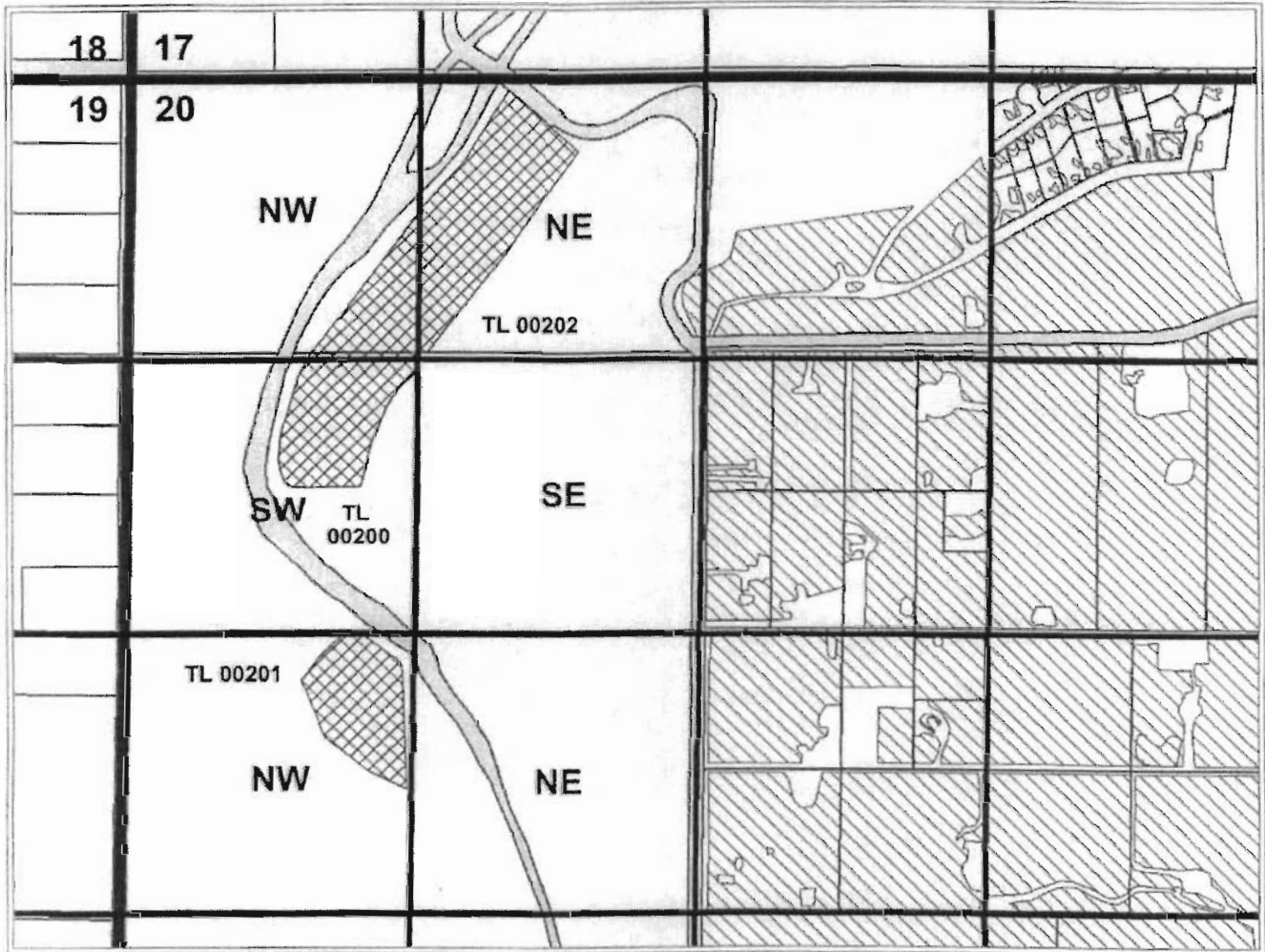
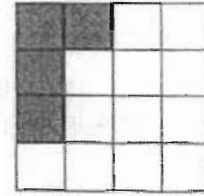
RECEIVED ↑ N

APR 10 2008 1 inch equals 400 feet

WATER RESOURCES DEPT.
 SALEM, OREGON



SWALLEY IRRIGATION DISTRICT INSTREAM LEASE MAP

16S12E20



APPLICATION FOR INSTREAM LEASE FOR

CL R, INC. (TL 00202) - 12.70 ACRES
 CL R, INC. (TL 00200) - 6.90 ACRES
 CL R, INC. (TL 00201) - 5.40 ACRES

-  — PROPOSED LEASE WATER
-  — EXISTING WATER



1" = 750'

Date: 05/23/03

Geo-Spatial Solutions, Inc.
www.geospatialsolutions.com

RECEIVED

APR 10 2003

WATER RESOURCES DEPT.
 SALEM, OREGON

Superseeded