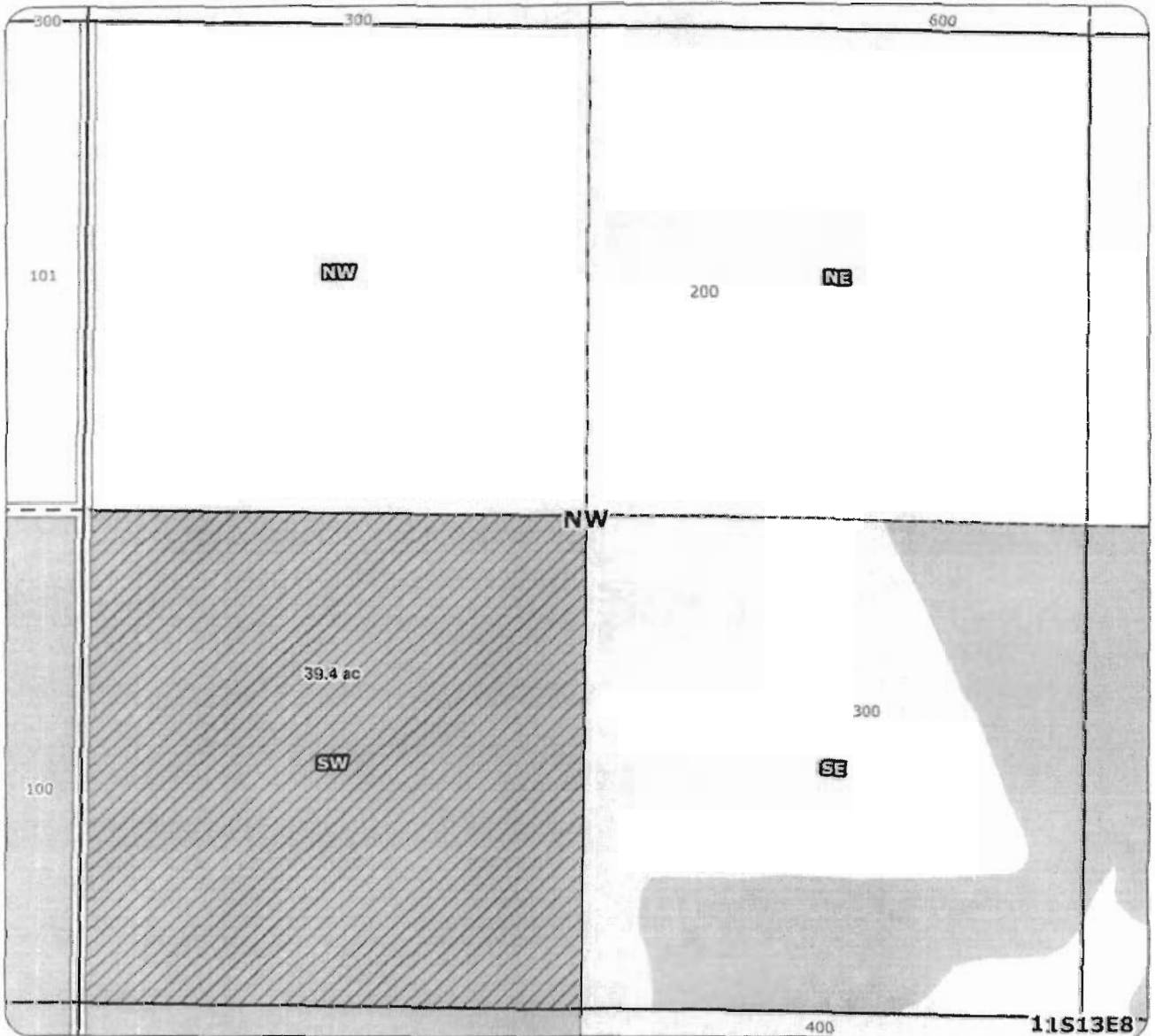




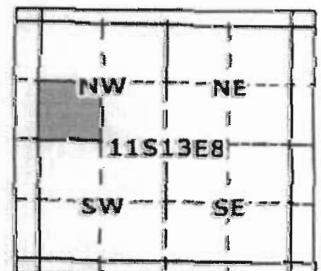
2007 North Unit Irrigation District Instream Lease Map



Application for 1 year Instream Lease Permit 33954 Cert 72284

-  Proposed Lease of Irrigation Rights
-  Water Rights

for
Ingalsbe Testamentary Trust
taxlot 300
39.4 acres
in 111308SWNW



Geo-Spatial Solutions, Inc.
www.geospatialolutions.com

Date Created: May 2007

RECEIVED 1 inch equals 400 feet



APR 31 2008


WATER RESOURCES DEPT.
SALEM, OREGON

2007 North Unit Irrigation District Instream Lease Map



Application for 1 year Instream Lease Permit 33954 Cert 72284

for
Irigalsbe Testamentary Trust
taxlot 300
39.4 acres in 111308NWSW
11.7 acres in 111308SWSW
Total Lease= 51.1 acres

 Proposed Lease of Irrigation Rights

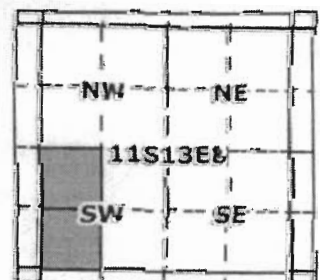
 Water Rights



Geo-Spatial Solutions, Inc.

www.geospatialsolutions.com

Date Created: May 2007



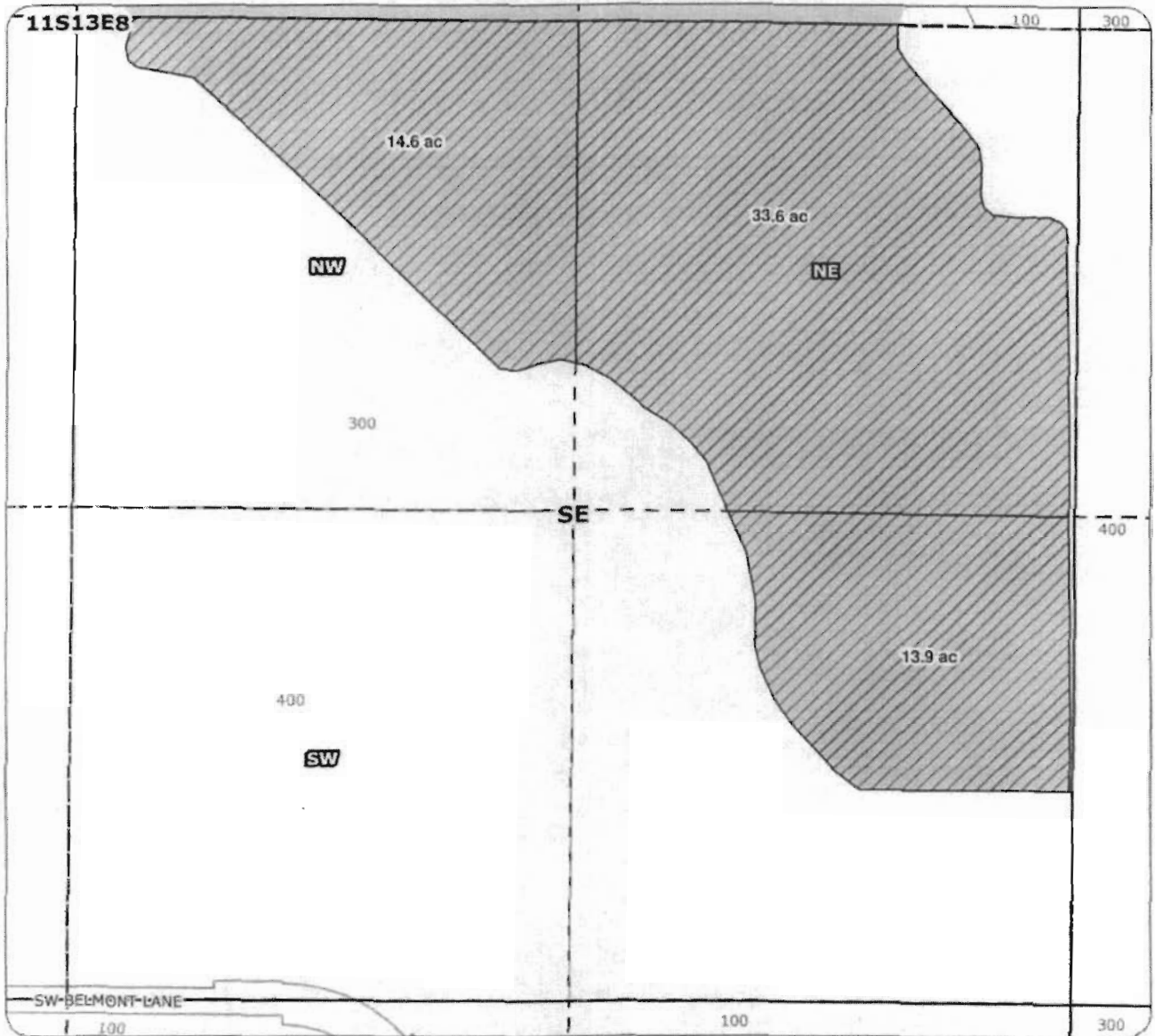
1 inch equals 464.883223 feet

RECEIVED

APR 21 2008

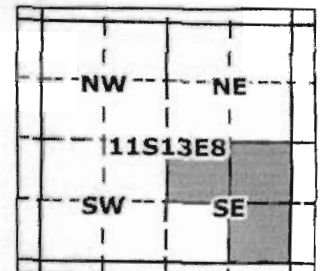
WATER RESOURCES DEPT.
SALEM, OREGON


2007 North Unit Irrigation District Instream Lease Map




Application for 1 year Instream Lease Permit 33954 Cert 72284

for
Ingalsbe Testamentary Trust
taxlot 300
14.6 acres in 111308NWSE
33.6 acres in 111308NESE
13.9 acres in 111308SESE
Total Lease= 62.1 acres



 Proposed Lease of Irrigation Rights

 Water Rights



Geo-Spatial Solutions, Inc.

www.geospatialsolutions.com

Date Created: May 2007

RECEIVED

1 inch equals 400 feet



APR 21 2008

WATER RESOURCES DEPT.
SALEM, OREGON