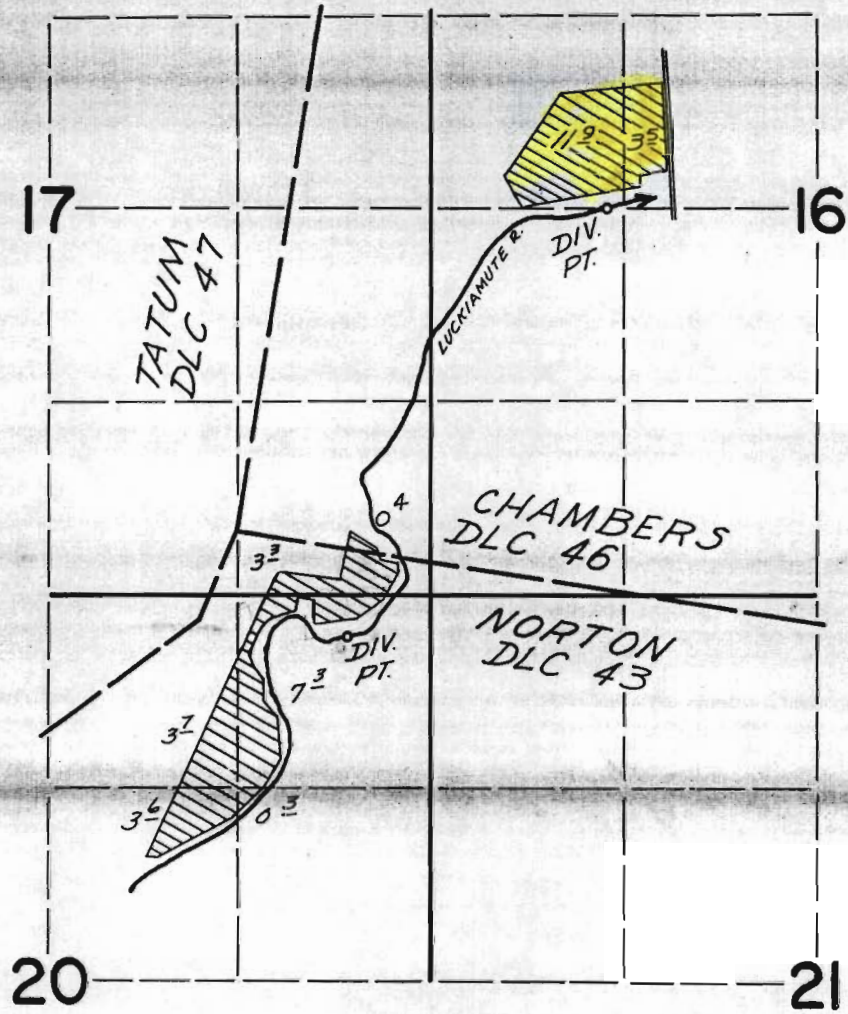


T.10S., R.6W., W.M.



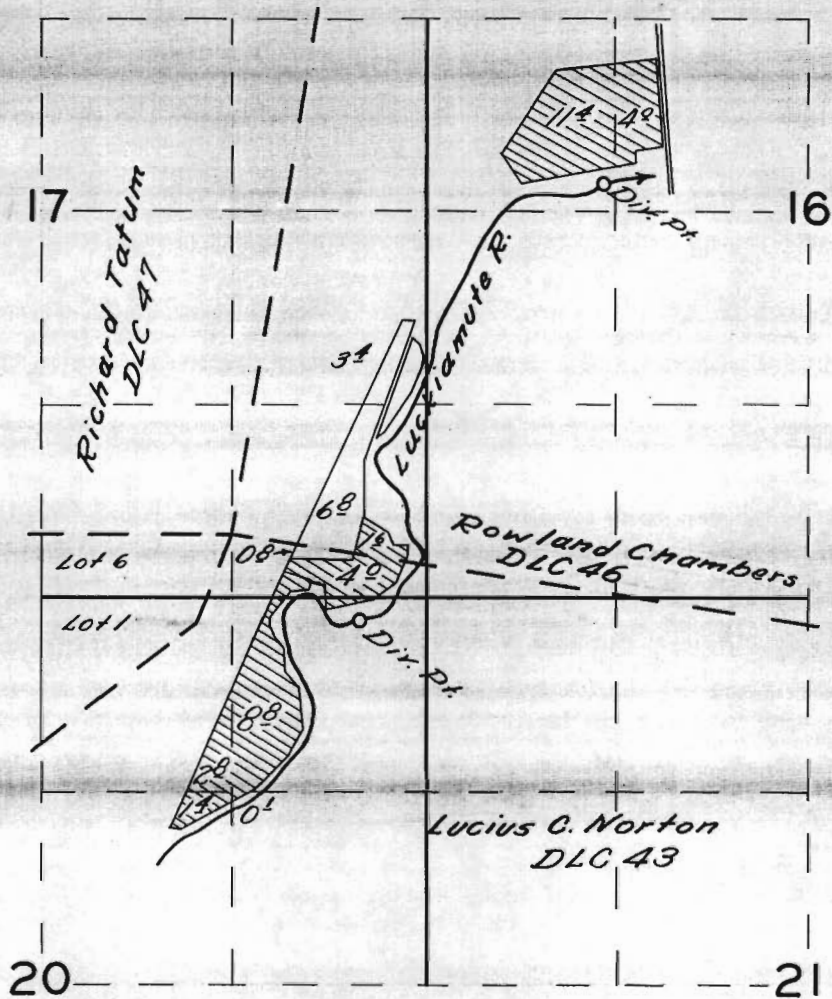
**FINAL PROOF SURVEY**  
UNDER

Application No. 22095 Permit No. 17370  
IN NAME OF

E.R. WOODS & REX GLEMENS

Surveyed SEPT. 7, 1956, by C.O. BARTELS  
MAY 3, 1957

T10S. R. 6W.W.M.



Superseded

**FINAL PROOF SURVEY**

UNDER

Application No. 22095 Permit No. 17370

IN NAME OF

E. R. Woods & Rex Clemens

Surveyed Sept. 7 1956, by C. O. Bastela  
May 3 1957

T10S. R6W. W.M. CODE MAP

10 6

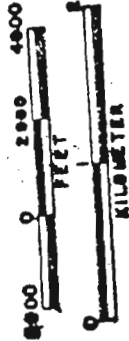
CODE MAP

REV 7-4-74

BENTON COUNTY

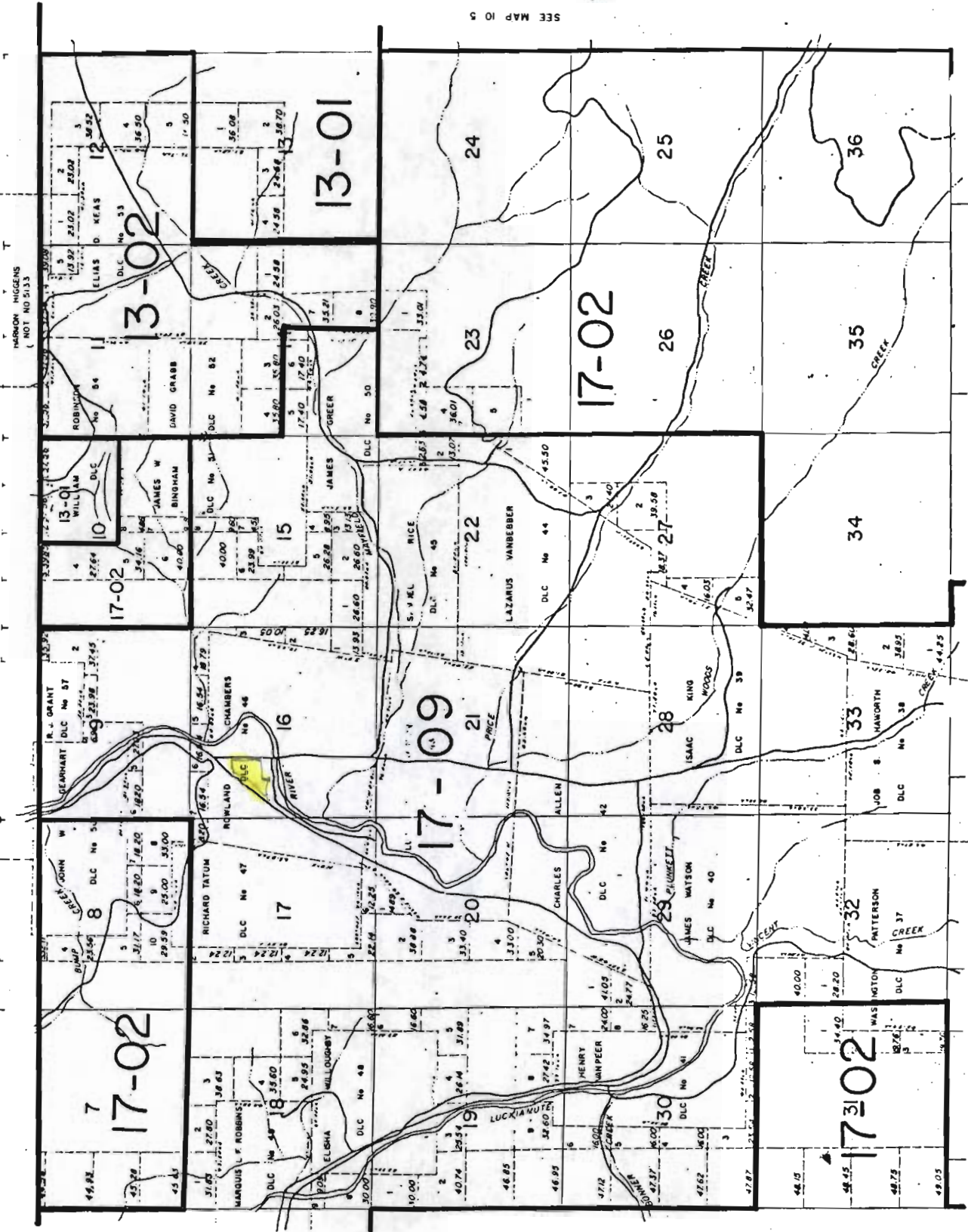
1"=2000'

SCALE 1:48000



POLK COUNTY

BENTON COUNTY



SEE MAP 10 7

SEE MAP 10 5

HARRON HIGGINS (NOT NO 5133)

10616CA

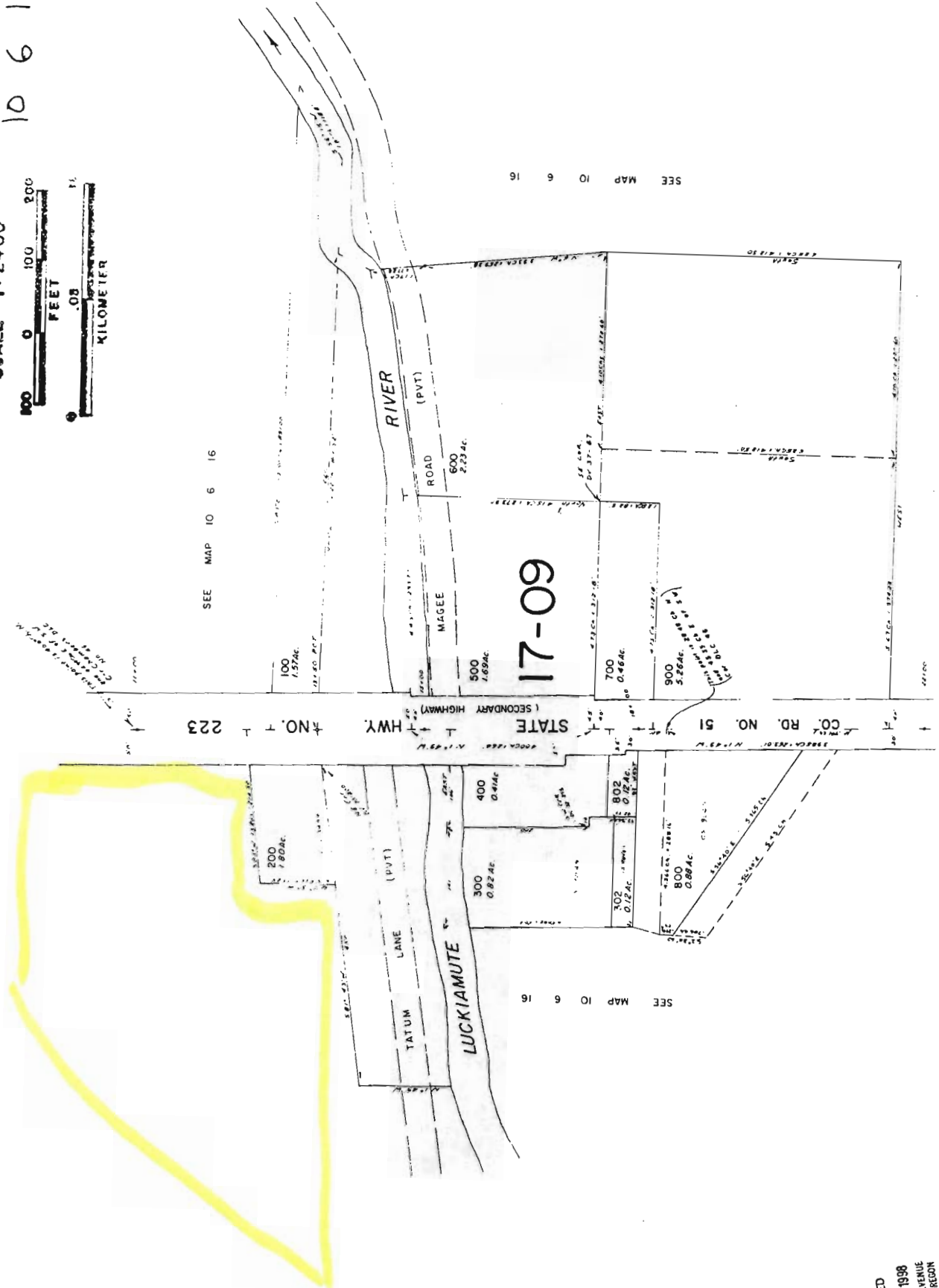
SCALE 1:2400



SEE MAP 10 6 16

SEE MAP 10 6 16

SEE MAP 10 6 16



SEE MAP 10 6 16

RECEIVED  
AUG 23 1998  
DEPT. OF REVENUE  
STATE OF OREGON

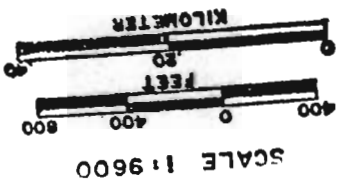
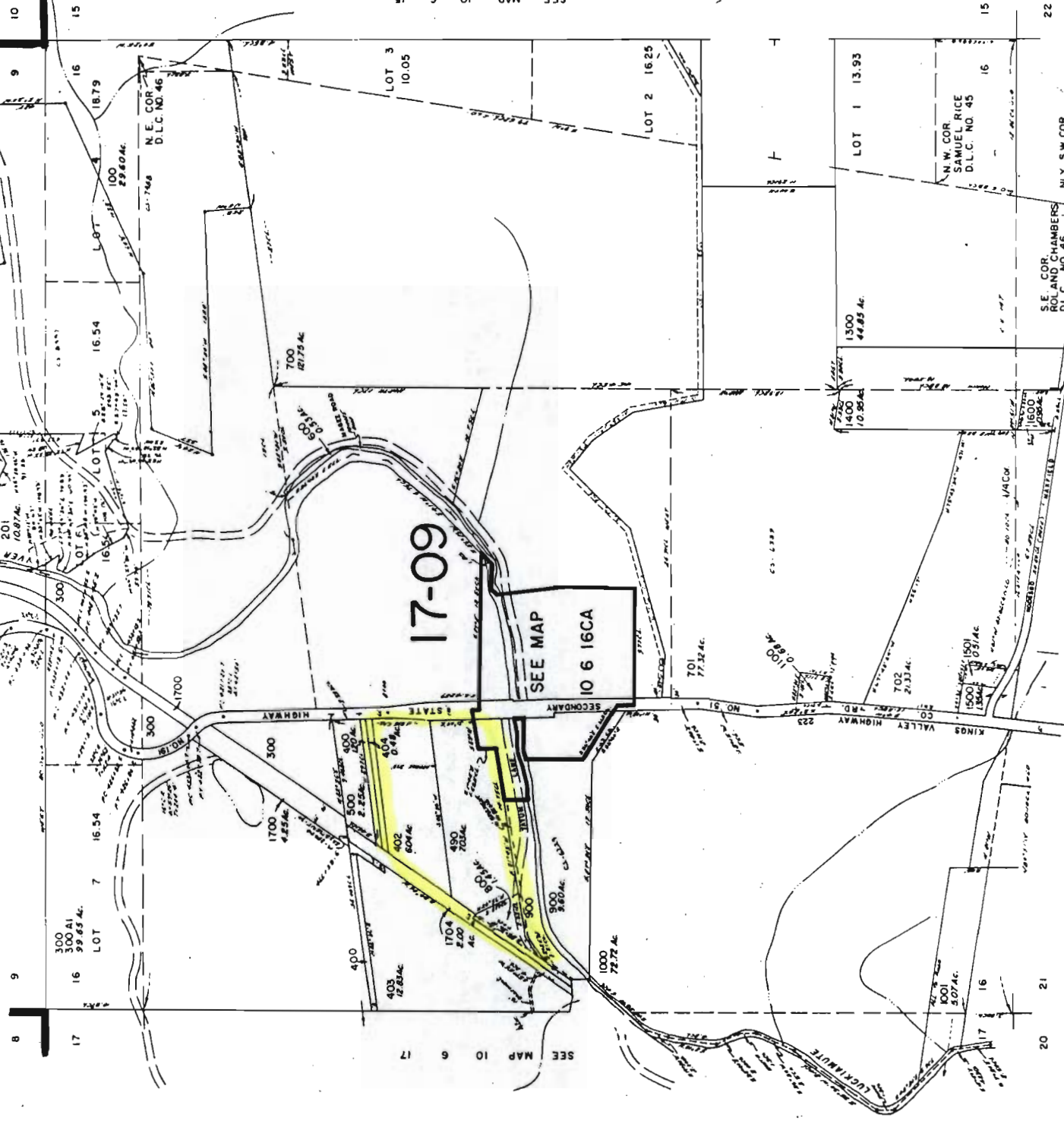
10612

SEE MAP 10 6 15

1"=400'

SEE MAP 10 6 9

SEE MAP 10 6 17



RECEIVED  
 JUN 14 1995  
 DEPT. OF REVENUE  
 STATE OF OREGON