

RECEIVED

RECEIVED

MAR 17 2008

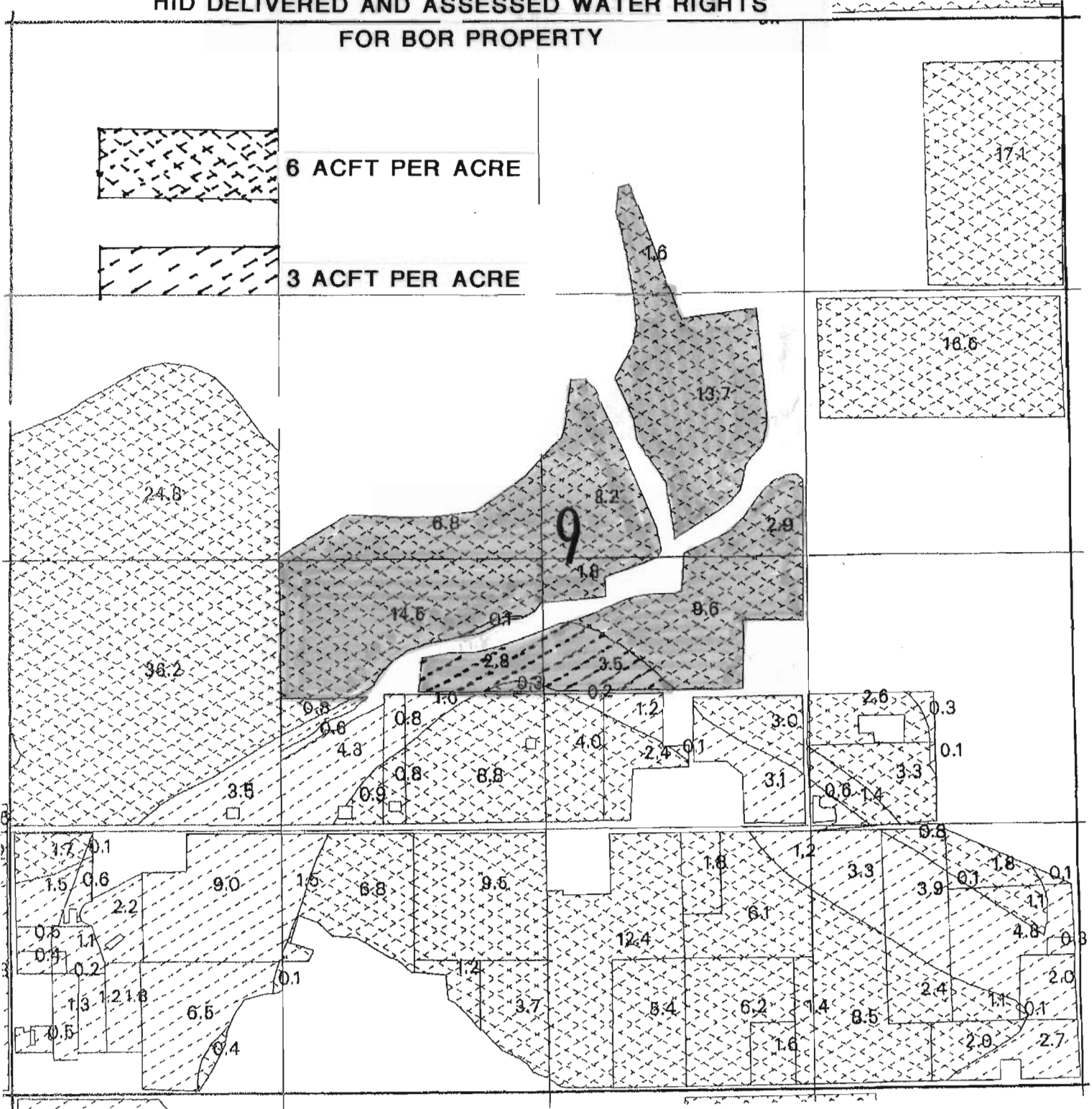
FEB 28 2008

WATER RESOURCES DEPT  
SALEM, OREGON

WATER RESOURCES DEPT  
SALEM, OREGON

# TOWNSHIP 4 N., RANGE 28 E., W.M.

## HID DELIVERED AND ASSESSED WATER RIGHTS FOR BOR PROPERTY



SCALE 1 inch = 660 feet



This map was prepared for Assessment & Taxation purposes only and has not been prepared or is it suitable for legal, engineering or surveying purposes.

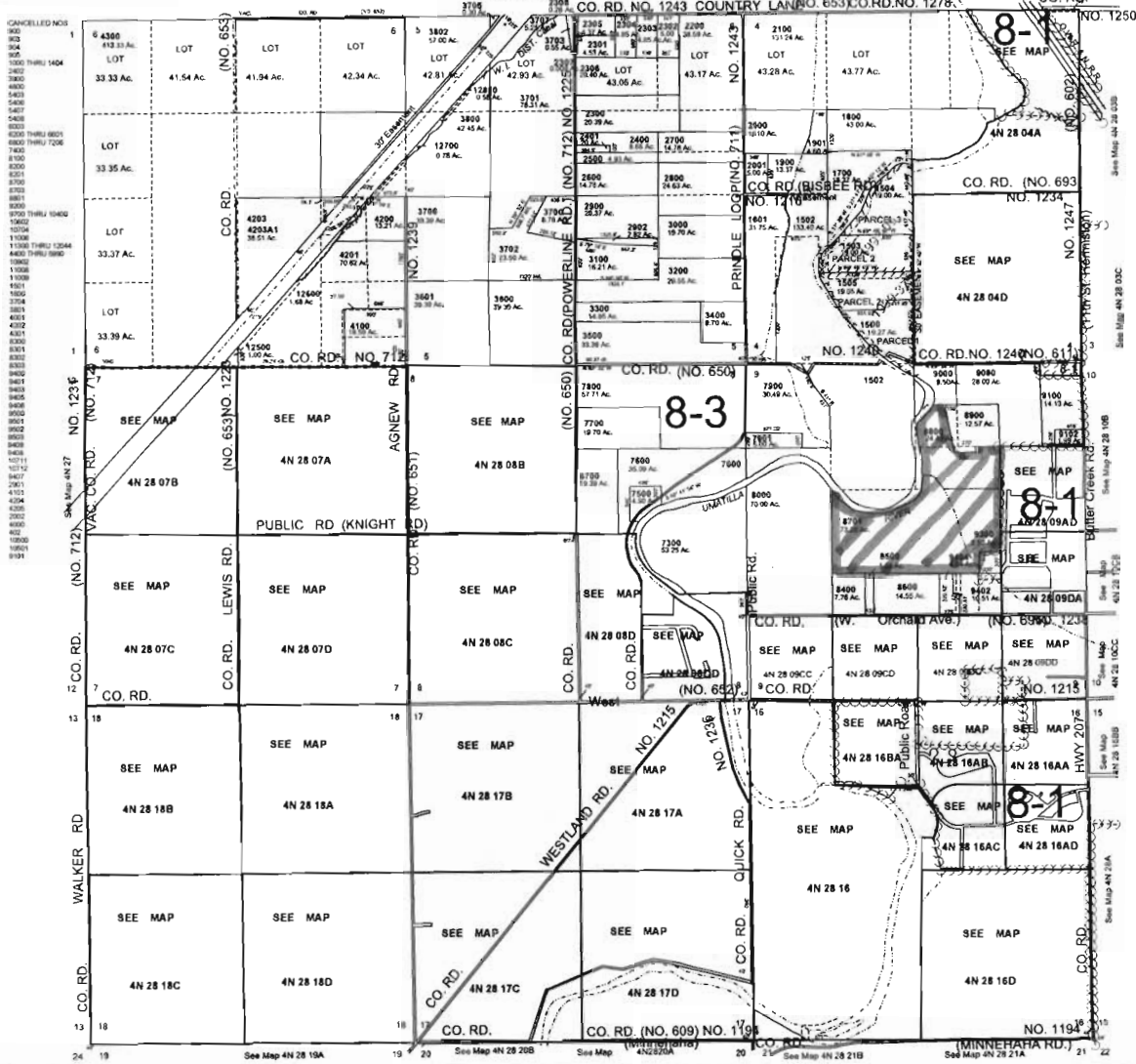
NW1/4 T4N R28E WM  
UMATILLA COUNTY

SCALE 1"=1000'

91307

4N28B

AERIAL PHOTO NO 1P 119-120  
2P 25-26



RECEIVED

MAR 17 2008

WATER RESOURCES DEPT  
SALEM, OREGON

RECEIVED

FEB 28 2008

WATER RESOURCES DEPT  
SALEM, OREGON