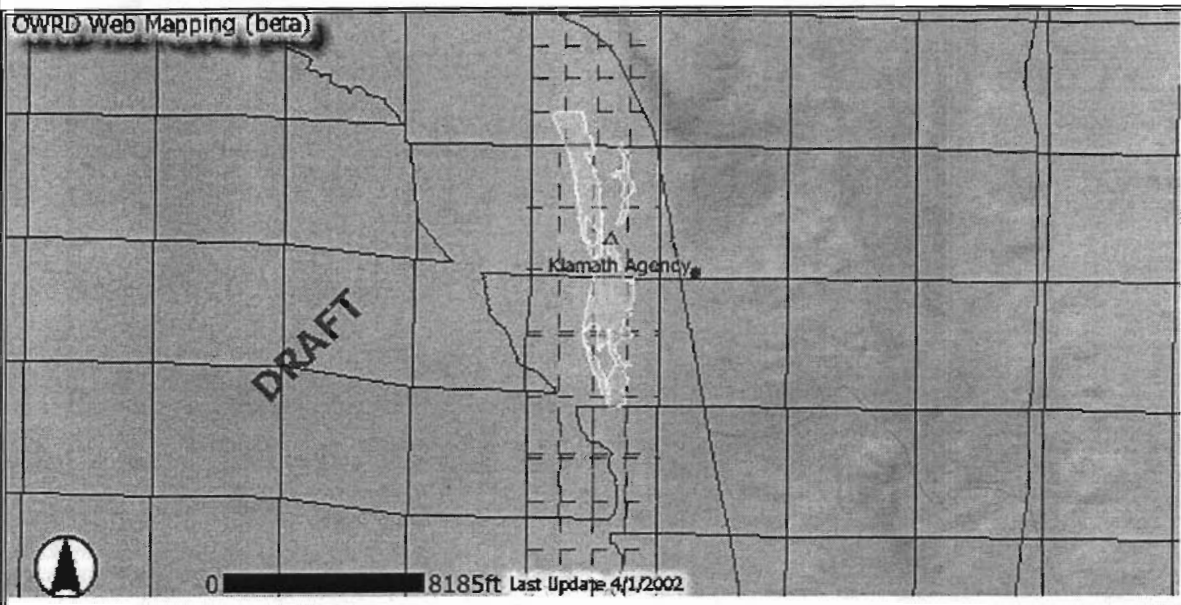




# Attachment 1a (Certificate 42935)



### Legend

- Township
- Sections
- Points of Diversion (Klamath)
- Place of Use (Klamath)
- Cities
- Roads**
- Interstate
- Local
- Other routes
- State
- US
- Vehicular trail
- Roads**
- Ferry
- Secondary
- Primary
- U.S.
- Interstate
- State
- Other
- Groundwater Restricted**
- LMI
- CRIT
- WITH

**RECEIVED**  
 JUN 01 2004  
 WATER RESOURCES DEPT  
 SALEM, OREGON

[Home](#) • [Help](#) • [Disclaimer](#) • [Data Dictionary](#) • [FAQ](#) • [E-Mail](#)

34 07V 03

34 07V 02

34 07 01

34 07 06

SHEET 1  
WEED ROAD

S.L.O. 189° 24' W 80.50 CH.

RECEIVED

JUN 01 2004

7  
WATER RESOURCES DE  
SALEM, OREGON

SEE MAP  
34 07V 09

2300  
518.04 AC.

LOT 1  
40.89

LOT 2  
40.64  
AGENCY HILL  
LOT 3

40.39

LOT 4  
40.14

S.L.O. 189° 24' W 80.00 CH.

SEE MAP  
34 07V 10

8

SEE MAP

34 07V 12

SEE MAP  
34 07V 03  
SHEET 2

2000 EAST 71.25 CH.  
70.50 AC.

2100  
549.90 AC.

10

LOT 2  
2400  
785.96 AC.

LOT 2  
2500  
20.10 AC.

LOT 3  
2900  
193.00 AC.

LOT 1  
2700  
2,547.10 AC.

LOT 1  
23

LOT 2  
2700  
2,547.10 AC.

LOT 3  
2700  
2,547.10 AC.

LOT 1  
2700  
2,547.10 AC.

LOT 2  
2700  
2,547.10 AC.

LOT 3  
2700  
2,547.10 AC.

SEE MAP  
34 07V 13  
SHEET 2

SEE MAP  
34 07V 13  
SHEET 2

SEE MAP  
34 07V 13  
SHEET 2

22

23

4500  
100.80 AC.

5000  
541.38 AC.

2700

26

LOT 3  
LOT 2  
LOT 5

LOT 5  
OLD LAKE  
LEVÉE

SEE MAP

34 07V 13

SEE MAP

SEE MAP

34 07V 24

SEE MAP

SEE MAP

34 07V 24

SHEET 2

25

SEE MAP

34

SEE MAP

34 07 18

SEE MAP

SEE MAP

34 07 19

SEE MAP

SEE MAP

34 07 30

SEE MAP

SEE MAP

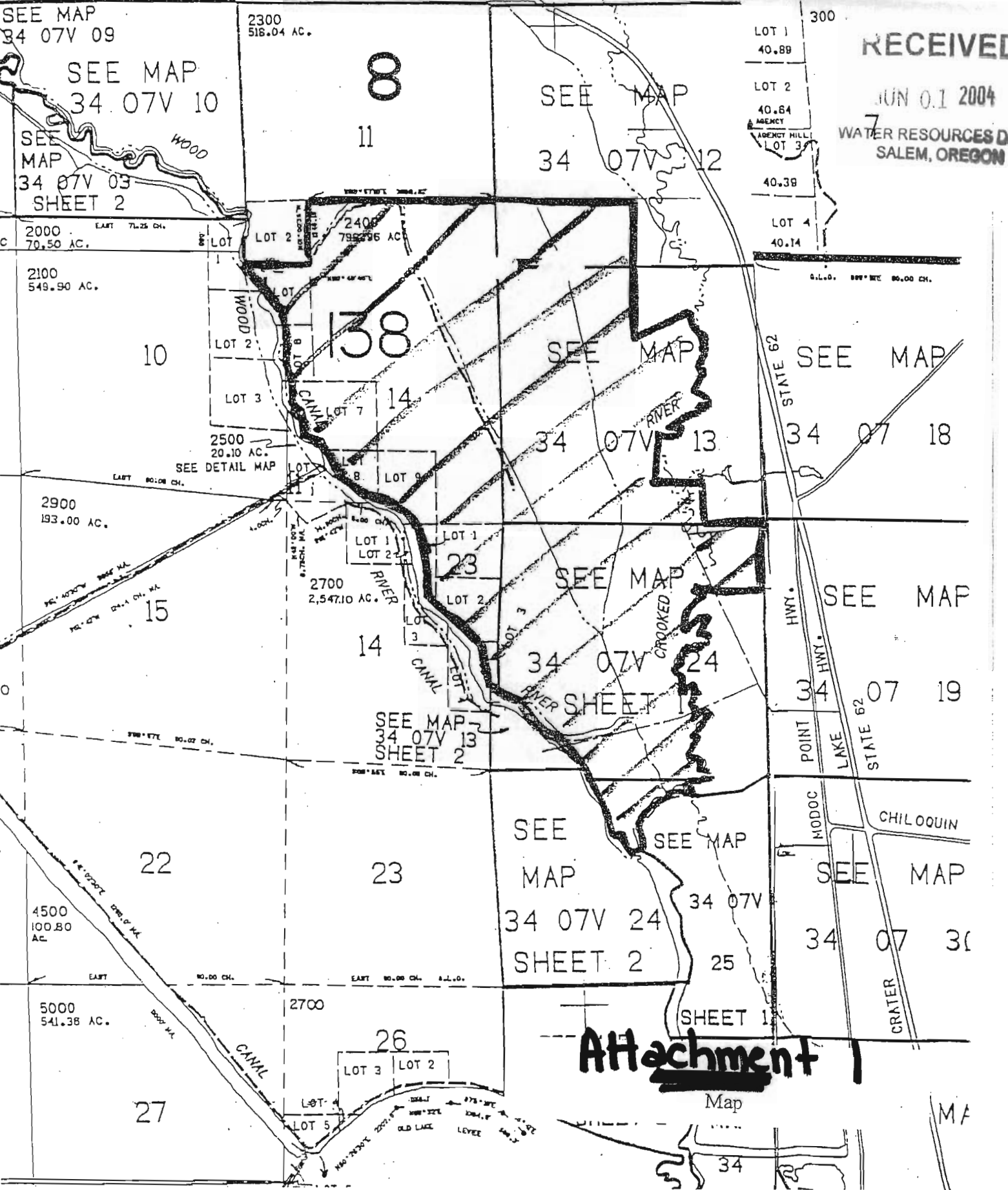
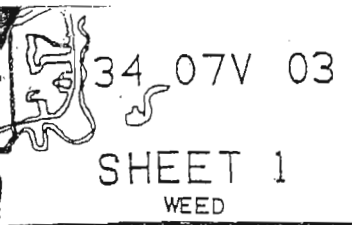
SEE MAP

34

Attachment 1

Map

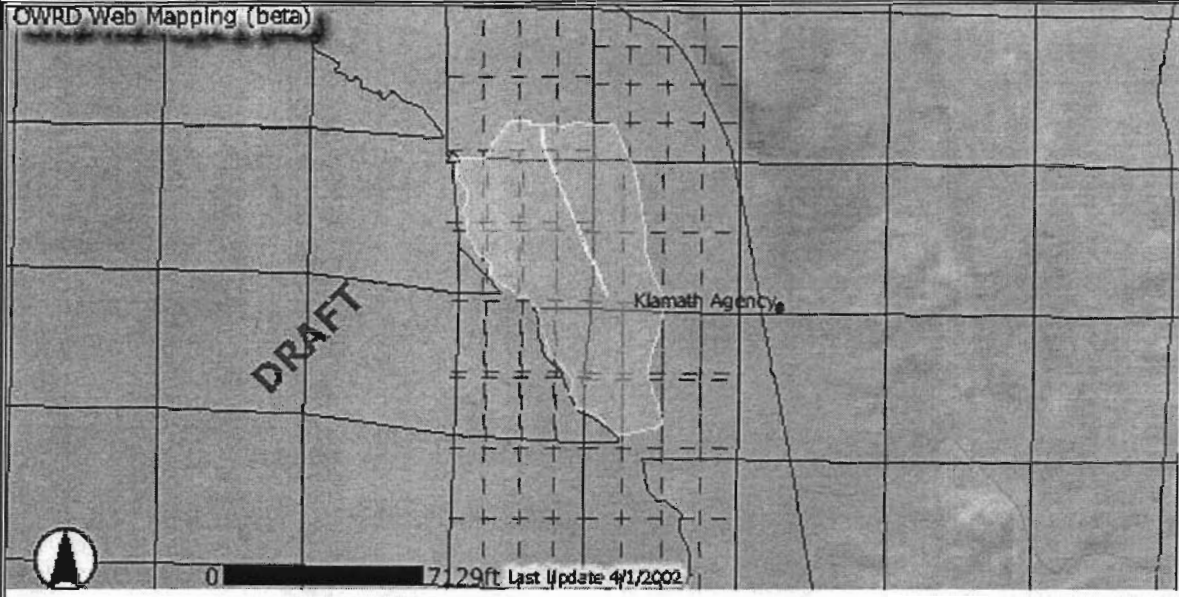
MA





# Attachment 1b (Certificate 42934)

OWRD Web Mapping (beta)



### Legend

- Township
- Sections
- Points of Diversion (Klamath)
- Place of Use (Klamath)
- Cities
- Roads**
- Interstate
- Local
- Other routes
- State
- US
- Vehicular trail
- Roads**
- Ferry
- Secondary
- Primary
- U.S.
- Interstate
- State
- Other
- Groundwater Restricted**
- LMI
- CRIT
- WITH



0 17,29ft Last Update 4/1/2002

**RECEIVED**  
 JUN 01 2004  
 WATER RESOURCES DEPT  
 SALEM, OREGON

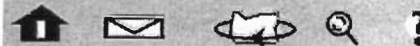
[Home](#) • [Help](#) • [Disclaimer](#) • [Data Dictionary](#) • [FAQ](#) • [E-Mail](#)

# Maps



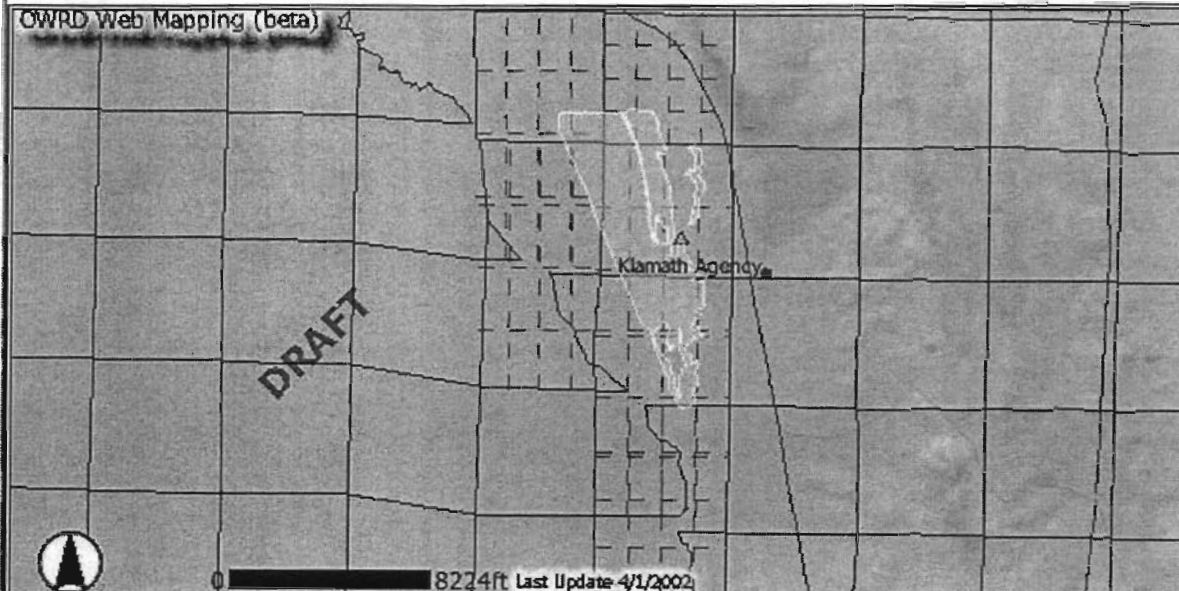
Oregon Water Resources Department

(503)378-8455 • 158 12th St. NE, Salem, OR 97310



## Attachment 1c - (Certificate 42936)

OWRD Web Mapping (beta)



### Legend

- Township
- Sections
- Points of Diversion (Klamath)
- Place of Use (Klamath)
- Cities
- Roads**
- Interstate
- Local
- Other routes
- State
- US
- Vehicular trail
- Roads**
- Ferry
- Secondary
- Primary
- U.S.
- Interstate
- State
- Other
- Groundwater Restricted**
- LMI
- CRIT
- WRII

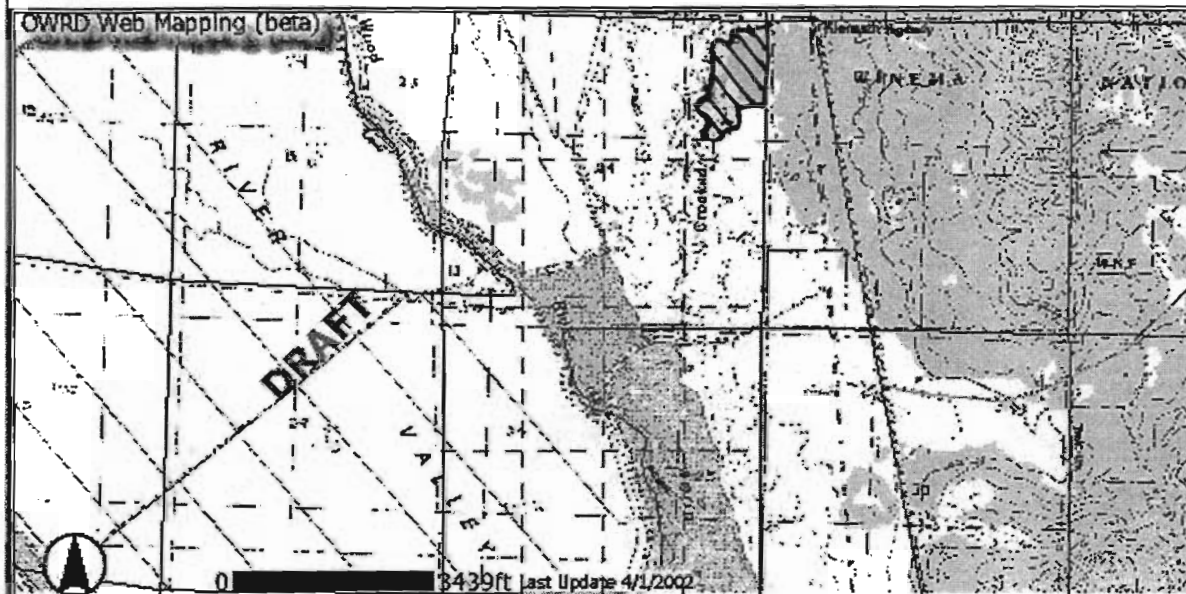
**RECEIVED**  
 JUN 01 2004  
 WATER RESOURCES DEPT  
 SALEM, OREGON

[Home](#) • [Help](#) • [Disclaimer](#) • [Data Dictionary](#) • [FAQ](#) • [E-Mail](#)

**Maps**

**Oregon Water Resources Department**  
 (503) 378-8455 • 158 12th St. NE, Salem, OR 97310

# Attachment 1d (Certificate 65386)



**Legend**

- Township
- Sections
- Points of Diversion (Klamath)
- Place of Use (Klamath)
- Roads**
- Interstate
- Local
- Other routes
- State
- US
- Vehicular trail
- Roads**
- Ferry
- Secondary
- Primary
- U.S.
- Interstate
- State
- Other
- Groundwater Restricted**
- LMI
- CRIT
- WITH
- CLAS

**RECEIVED**  
 JUN 01 2004  
 WATER RESOURCES DEPT  
 SALEM, OREGON

[Home](#) • [Help](#) • [Disclaimer](#) • [Data Dictionary](#) • [FAQ](#) • [E-Mail](#)