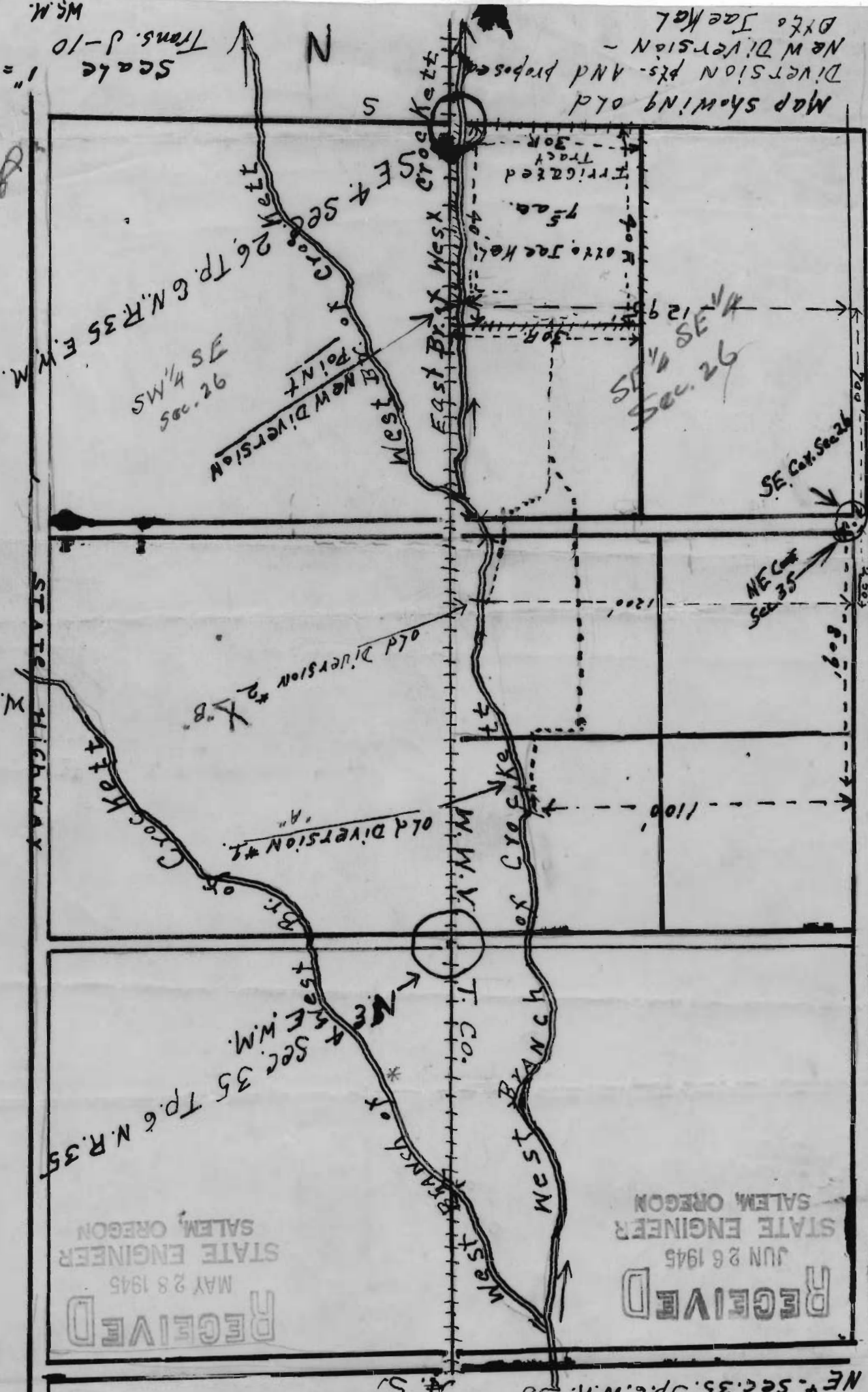




Scale 1" = 400'
Trans. d-10
M.S.M.

Map showing old
DIVERSION pts. AND proposed
NEW DIVERSION -
Dx to Jae Mat



RECEIVED
MAY 28 1945
STATE ENGINEER
SALEM, OREGON

RECEIVED
JUN 26 1945
STATE ENGINEER
SALEM, OREGON

NE 1/4 Sec. 35
T. 6 N. R. 35
W.M.

NE 1/4 Sec. 35, T. 6 N. R. 35
E.M.S.