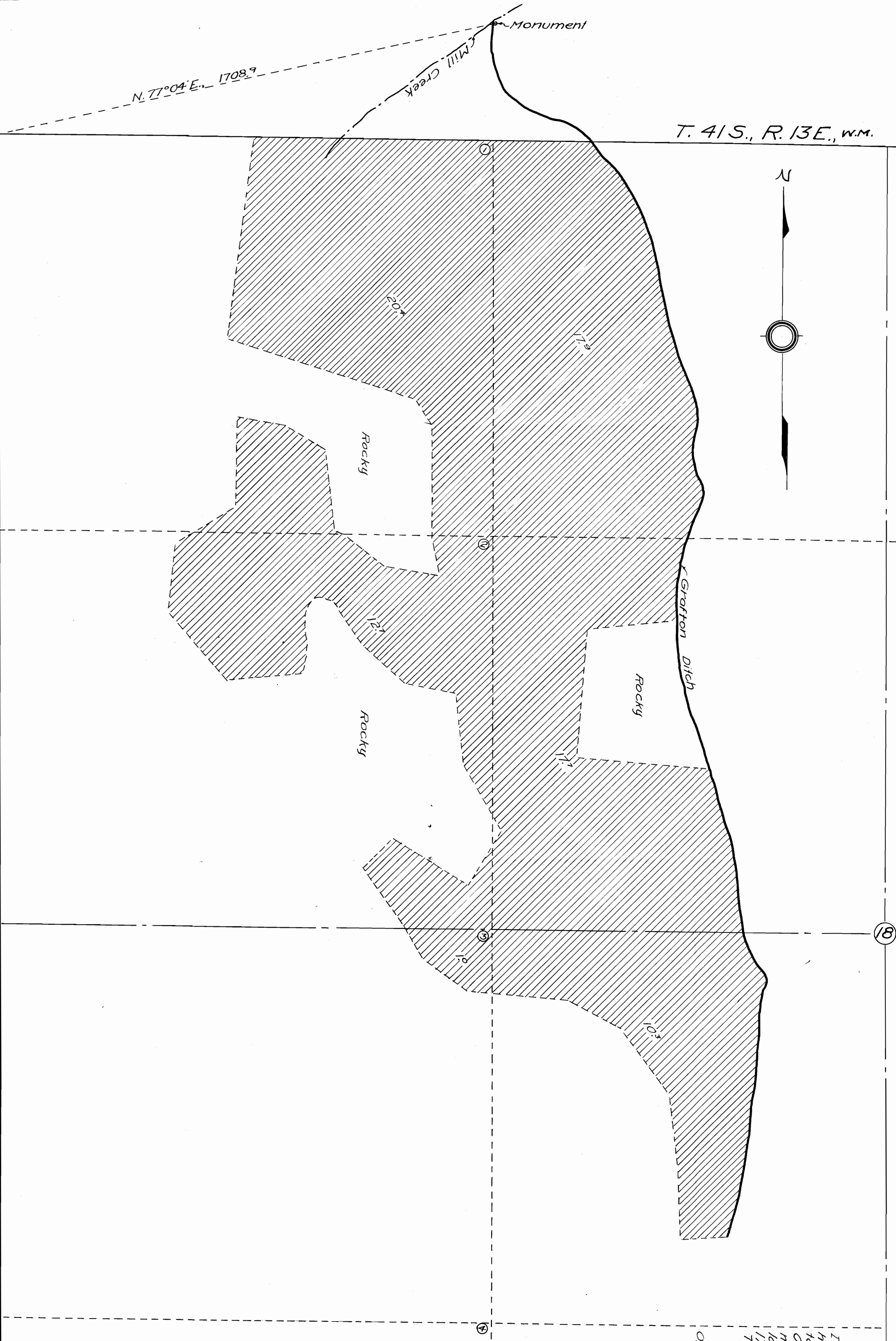
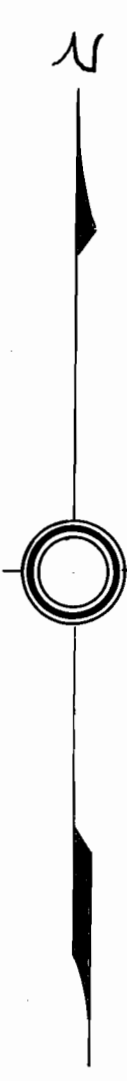
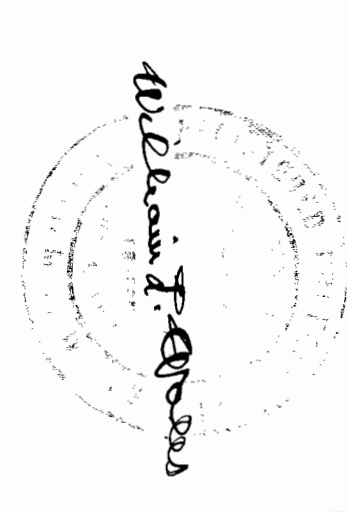


T. 41 S., R. 13 E., W.M.



I, William L. Wales, of Klamath Falls, Oregon, do hereby certify that this map was made from notes taken during an actual survey made by me on Oct. 6th, 1947; that the monument shown on this map consisting of a 3/8" steel reinforcing bar, 30" long, driven in the ground 24", is N. 77°04' E., 1708.9 feet from the NW. corner of Section 18, T. 41 S., R. 13 E., W.M.

William L. Wales
Registered Professional Engineer
Date of Registration Aug. 4, 1927.
Oregon No. 1347.



1574
1947

MAP OF
LANDS TO BE IRRIGATED
BY
HARRY R. AND BARBARA
JACKMAN.
Klamath County, Oregon.
Scale 1" = 200'
Survey & Map by: William L. Wales & Son,
Klamath Falls, Oregon.