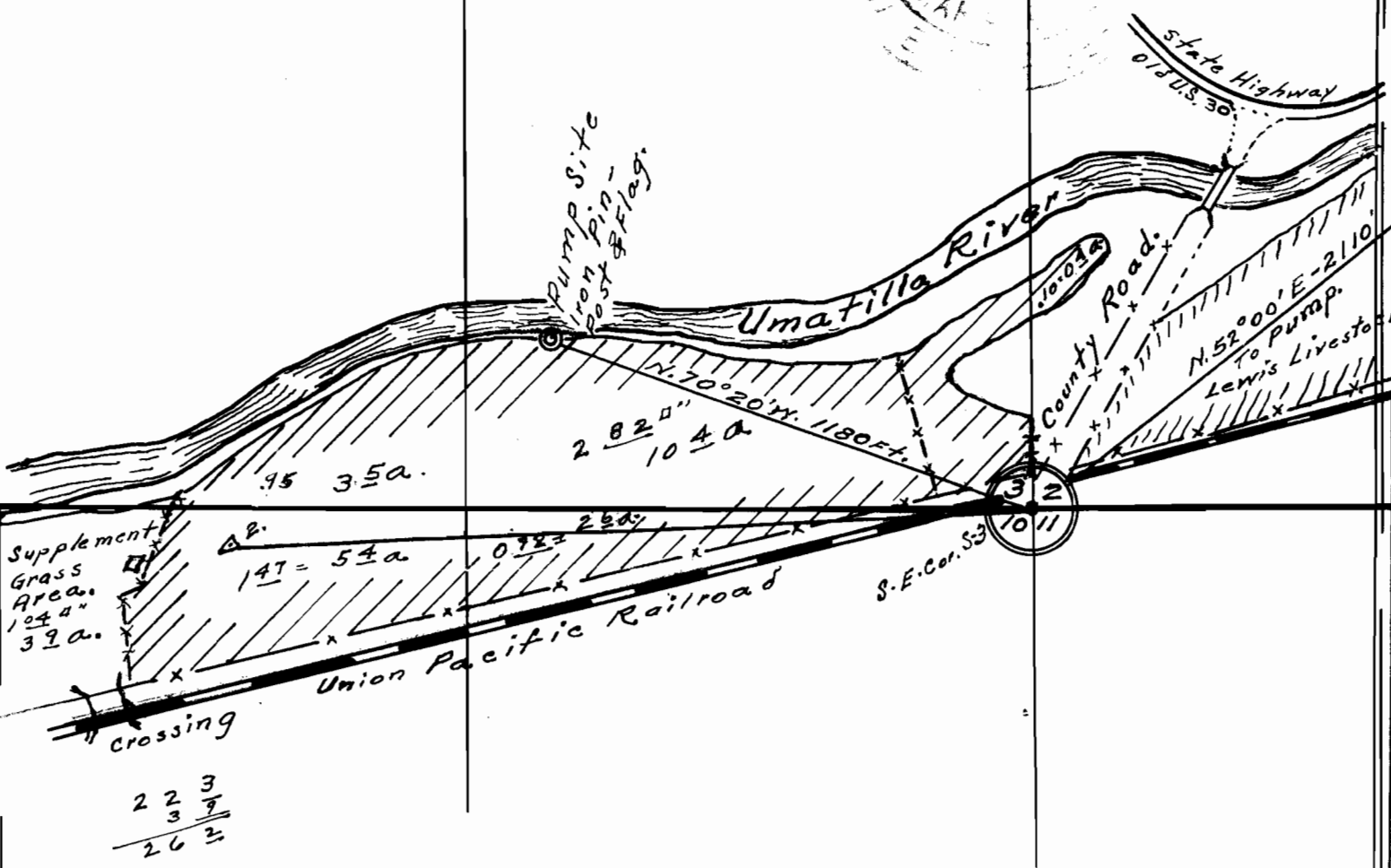
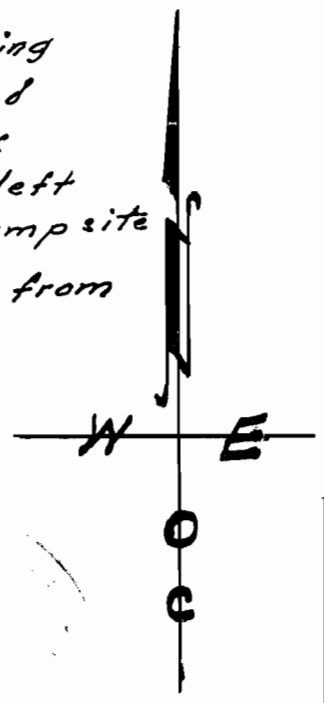


Map showing part of  
 Secs. 3 and 10 - T2N., R.30 E.W.M. - owned and operated by  
 C.A. Hubbard - Pendleton, Ore. - (Yoakum Sta)  
 Surveyed - staked & platted - Mar. 25 - 1955 - By W.E.O. Criger.  
 Scale: 1 in. = 400 Ft. Const. = 1" = 3670.

I, W.E.O. Criger of Pendleton, Oregon do hereby  
 certify that this map was made from notes taken during  
 an actual survey made by me on Mar. 25<sup>th</sup> 1955, and  
 that the monument shown on this map, consists of  
 a 3/4" Iron pin 3' long and the top of which was left  
 6" above the surface of the ground at the pump site  
 and noted as follows: N. 70° 20' W. 1180 Ft., from  
 the S.E. Cor. of Sec. 3, T. 2 N., R. 30 E. W.M.  
 Umatilla County, Oregon.



22 3  
 3 9  
 26 2