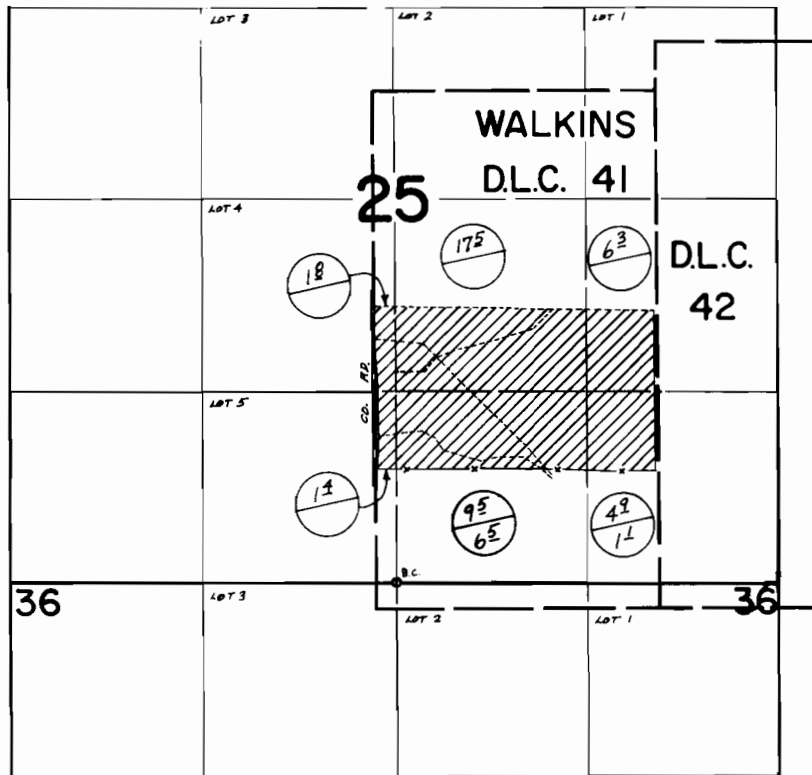



# T.39S. R.8W. W.M.



DIV. PT. FROM SUCKER CR. LOC.: 1600' N. & 1650' W. FROM SE COR SEC 29, T. 39S., R. 7W., W.M.

 TRANS. P-103  
 CERT. 37377

## FINAL PROOF SURVEY UNDER

TRANSFER NO. P-103  
 Application No. .... Permit No. ....  
 IN NAME OF

FRED McCLINTICK

Surveyed MAY 8, 1975, by L. TOLL