

RECEIVED
FEB 11 1974
STATE ENGINEER
SALEM, OREGON

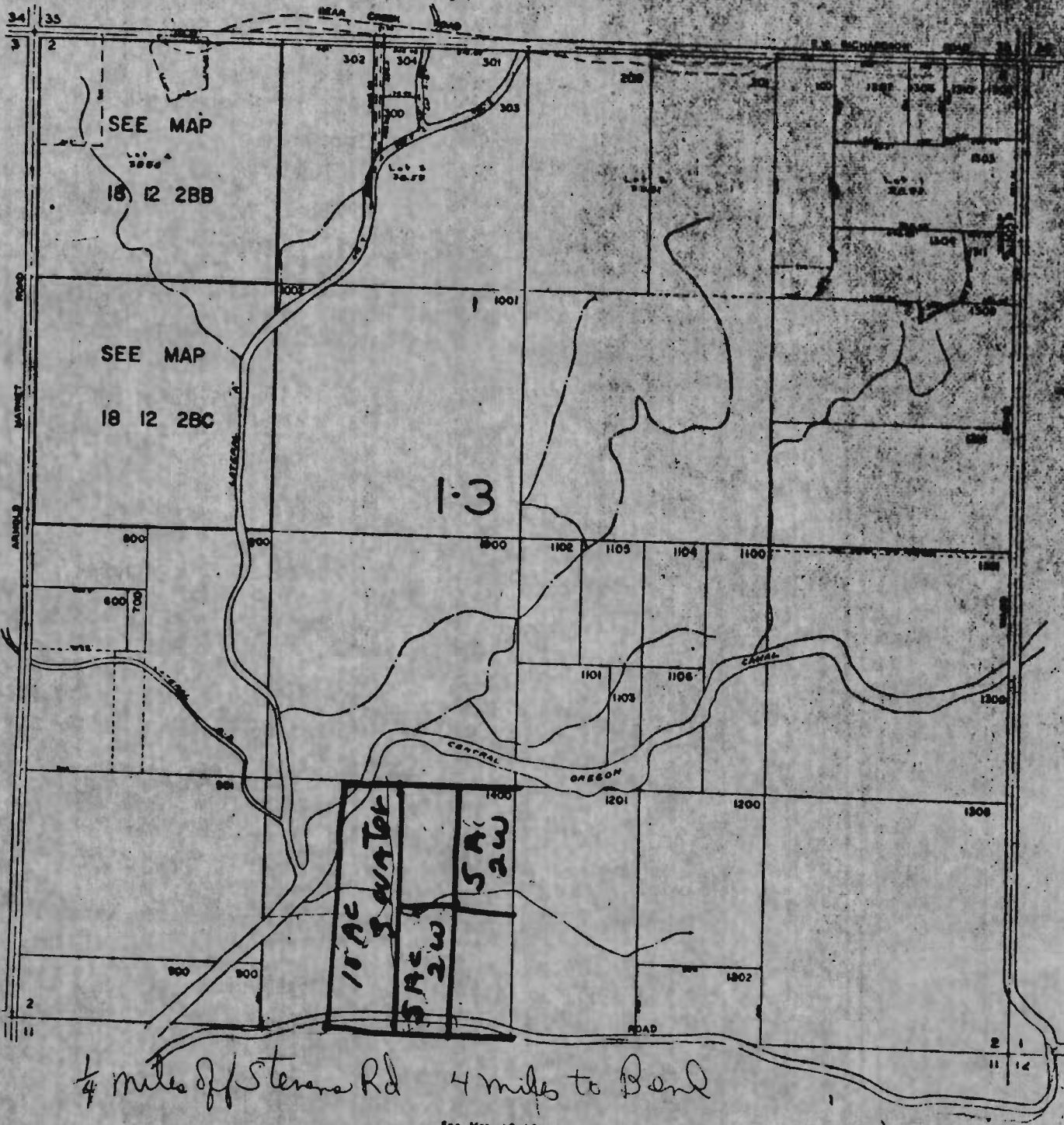
SEC. 2 TMS RIVER

DESCHUTES COUNTY

SCALE: 1" = 400'

See Map 17 12 34

3093



See Map 16 12 3

See Map 15 12 1

1/4 miles off Stevens Rd 4 miles to Bend

See Map 18 12 11