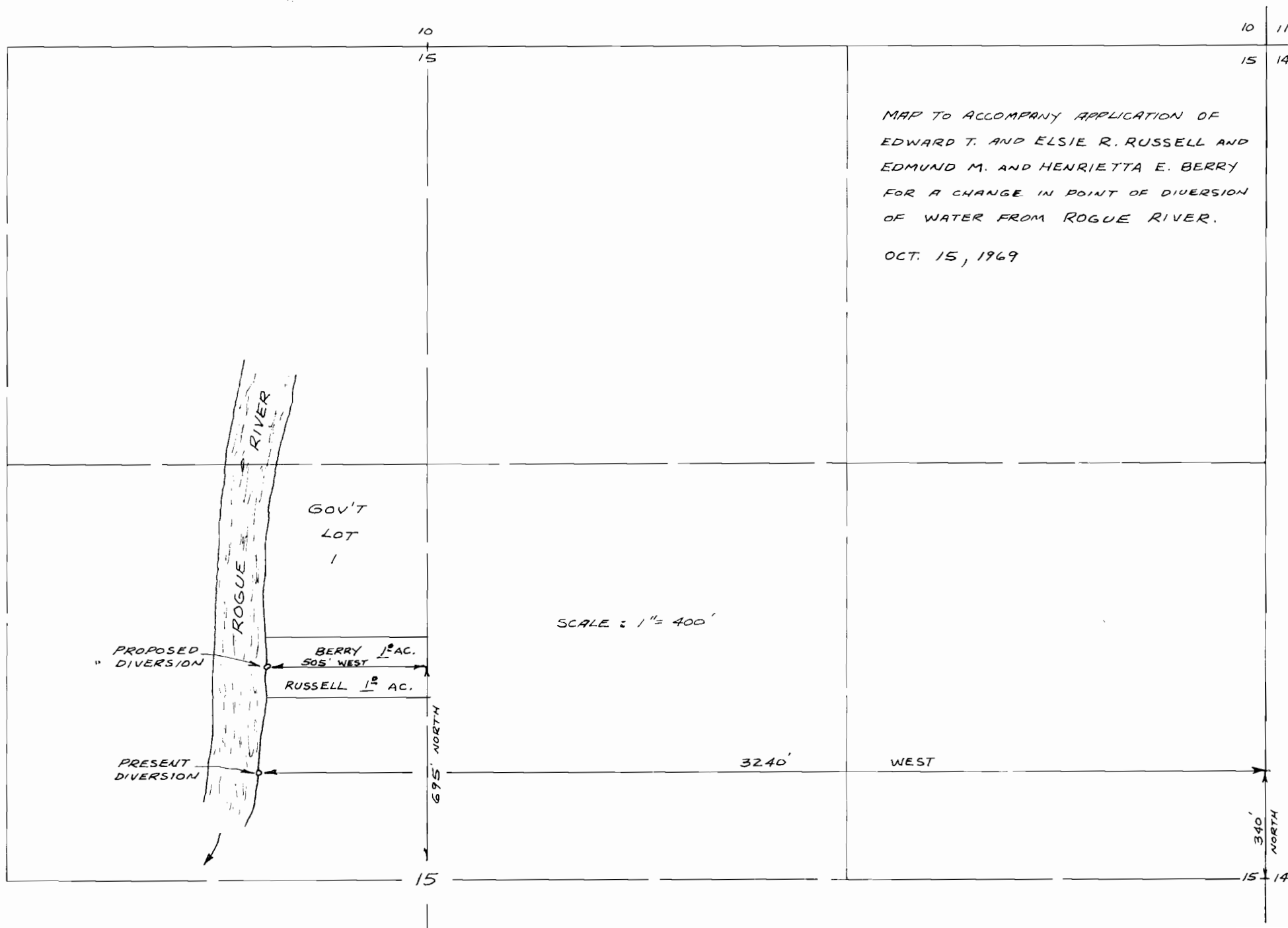


RECEIVED
OCT 15 1969
STATE ENGINEER
DIVISION

T. 34 S., R. 1 W. W.M.



MAP TO ACCOMPANY APPLICATION OF
EDWARD T. AND ELSIE R. RUSSELL AND
EDMUND M. AND HENRIETTA E. BERRY
FOR A CHANGE IN POINT OF DIVERSION
OF WATER FROM ROGUE RIVER.

OCT. 15, 1969

SCALE : 1" = 400'

WEST

340'
NORTH