

NE 1/4 NW 1/4 Sec. 9
23 - (9-471)
owned by city of
Redmond,
23 - (806)

To Dump yard.

NOTE: The Carey Act lands, as indicated on this map, are in accordance with the records in the office of the State Engineer as of March 24, 1910.

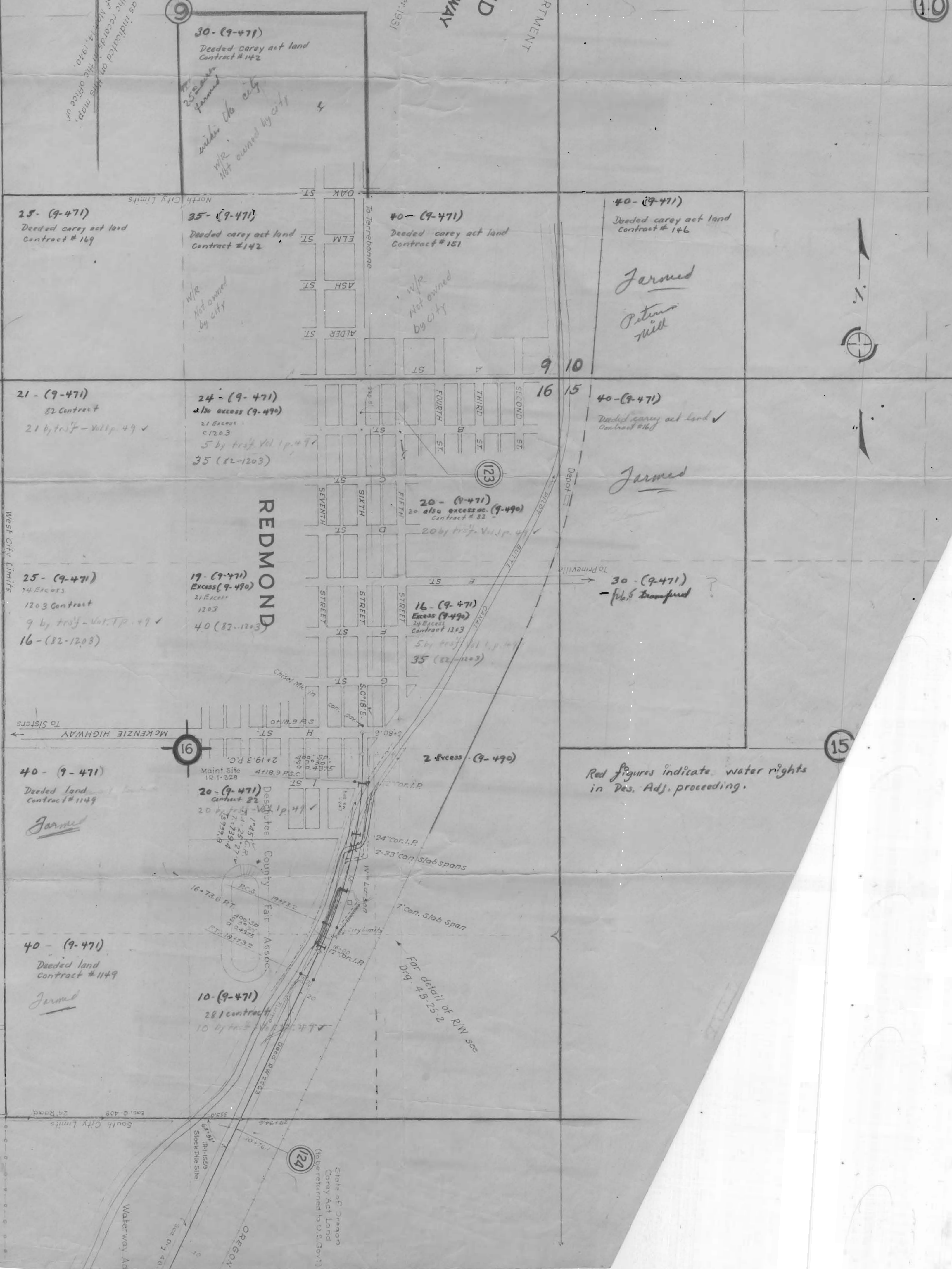
T.S.R. 13E

NOTE: Curve data in Black show & for Right-of-Way Constructed Line shown in Red (Const. 1932-1936) Right-of-Way Markers shown: October, 1931

REDMOND TO BEND
THE DALLES - CALIFORNIA HIGHWAY
DESCHUTES COUNTY
Scale 1 in = 400 FT.

OREGON STATE HIGHWAY DEPARTMENT
RELOCATED LINE

10



15

Sold
Deed Q 250
Gravel Pit 1R-1010

Deed Q 412
Gravel Pit 1R-1001

124