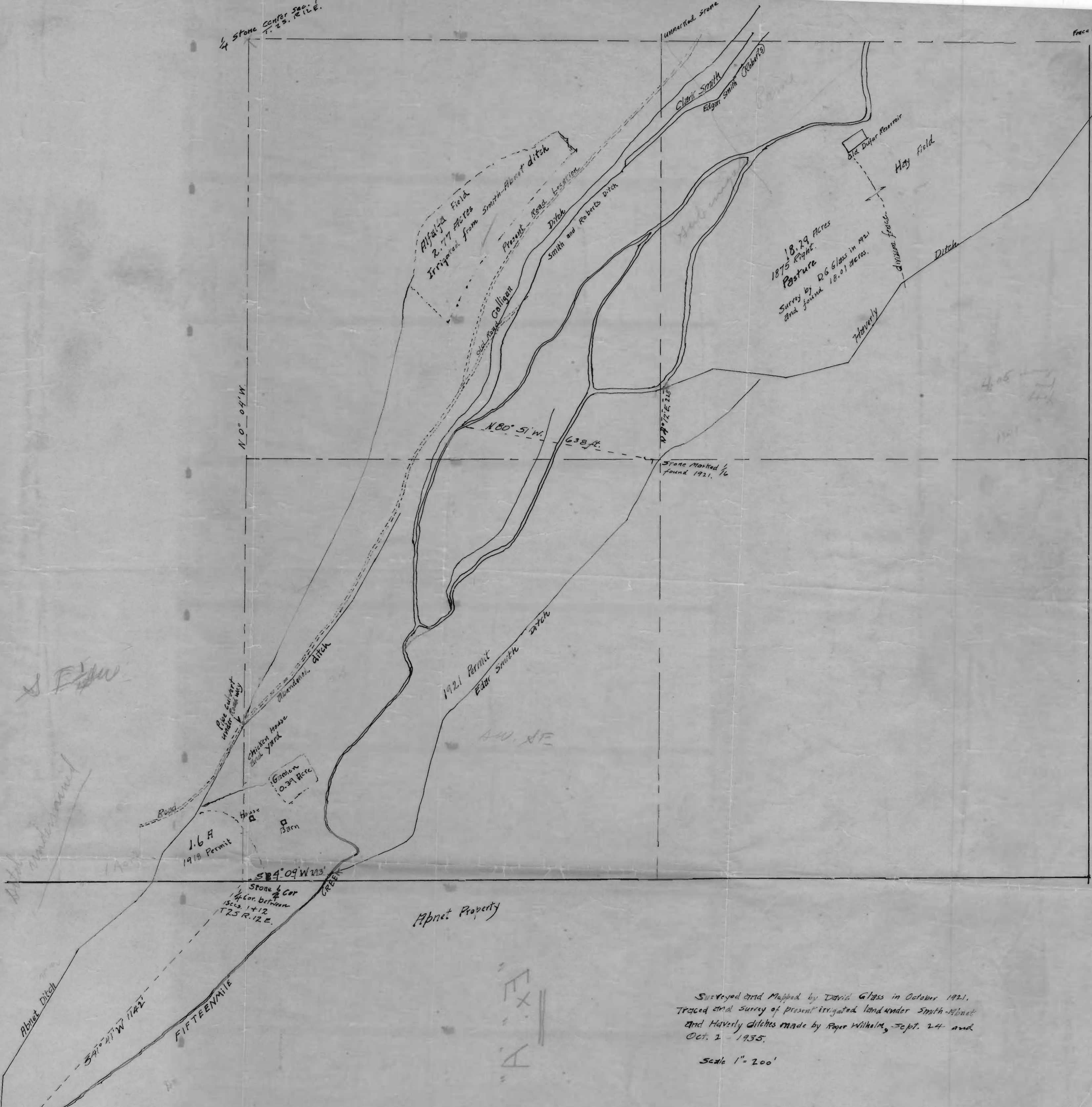


Stone Center Sec. 1
T. 23. R. 12 E.

Face West



Original copy of map

11" X 17"

Surveyed and Mapped by David Glass in October 1921.
Traced and Survey of present irrigated land under Smith-Abnet
and Haverly ditches made by Roger Wilhelm, Sept. 24 and
Oct. 1 - 1935.

Scale 1" = 200'