

5-191

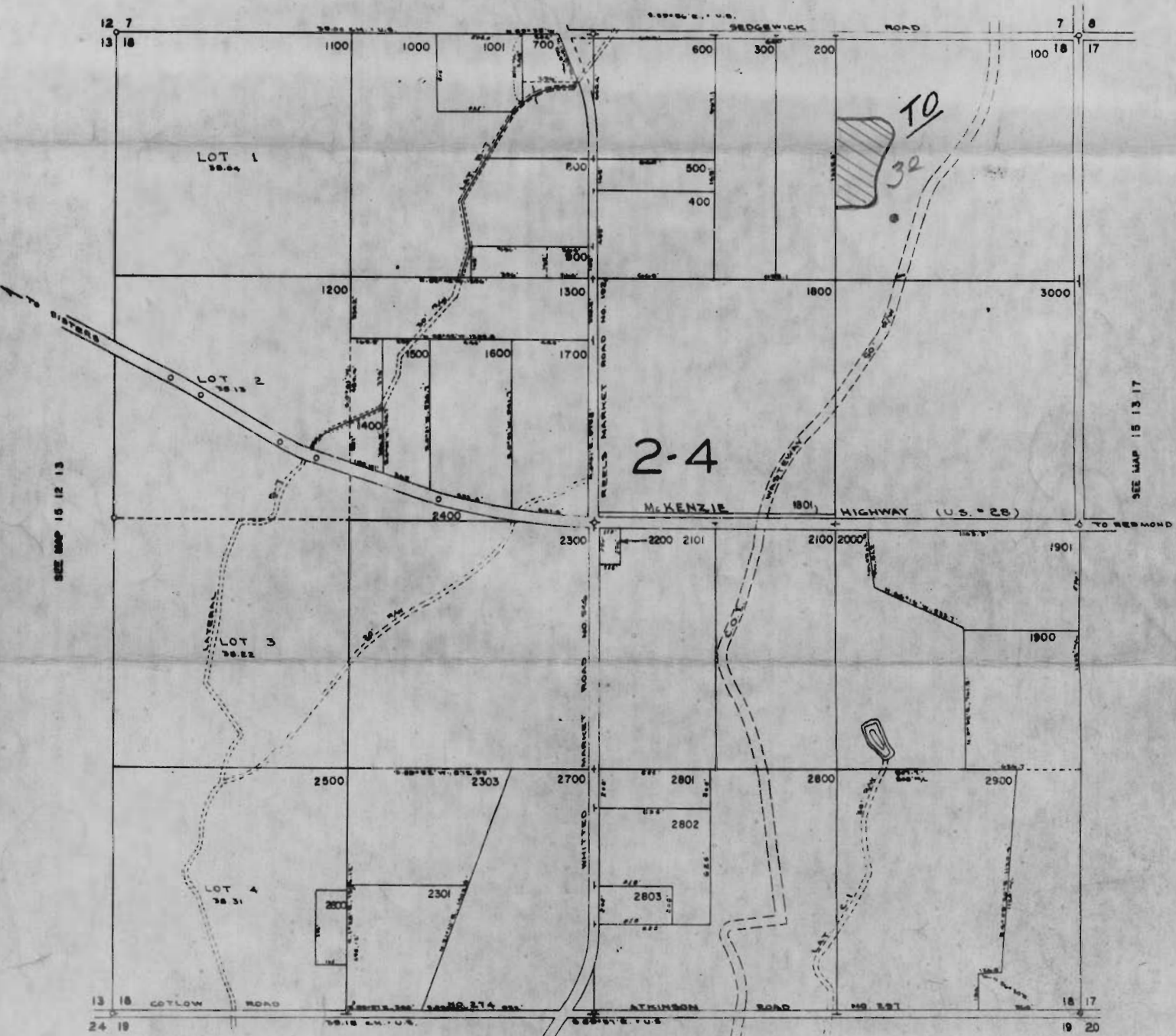
SEC. 18 T. 15 S. R. 13 E. W.M.

DESCHUTES COUNTY

SCALE 1" = 400'

15 13 18

SEE MAP 15 13 7



SEE MAP 15 12 13

SEE MAP 15 13 17

SEE MAP 15 13 19

RECEIVED  
JUL 21 1967  
STATE ENGINEER

15 13 18

To Clarence Lindsay, Rt 1, Box 241, Redmond, Oregon

Section 33 T.14S. R.13E.W.M.  
DESCHUTES COUNTY

1" = 400'

See Map 14 13 28

29 28

32 33

27

34

See Map 14 13 32

See Map 14 13 34

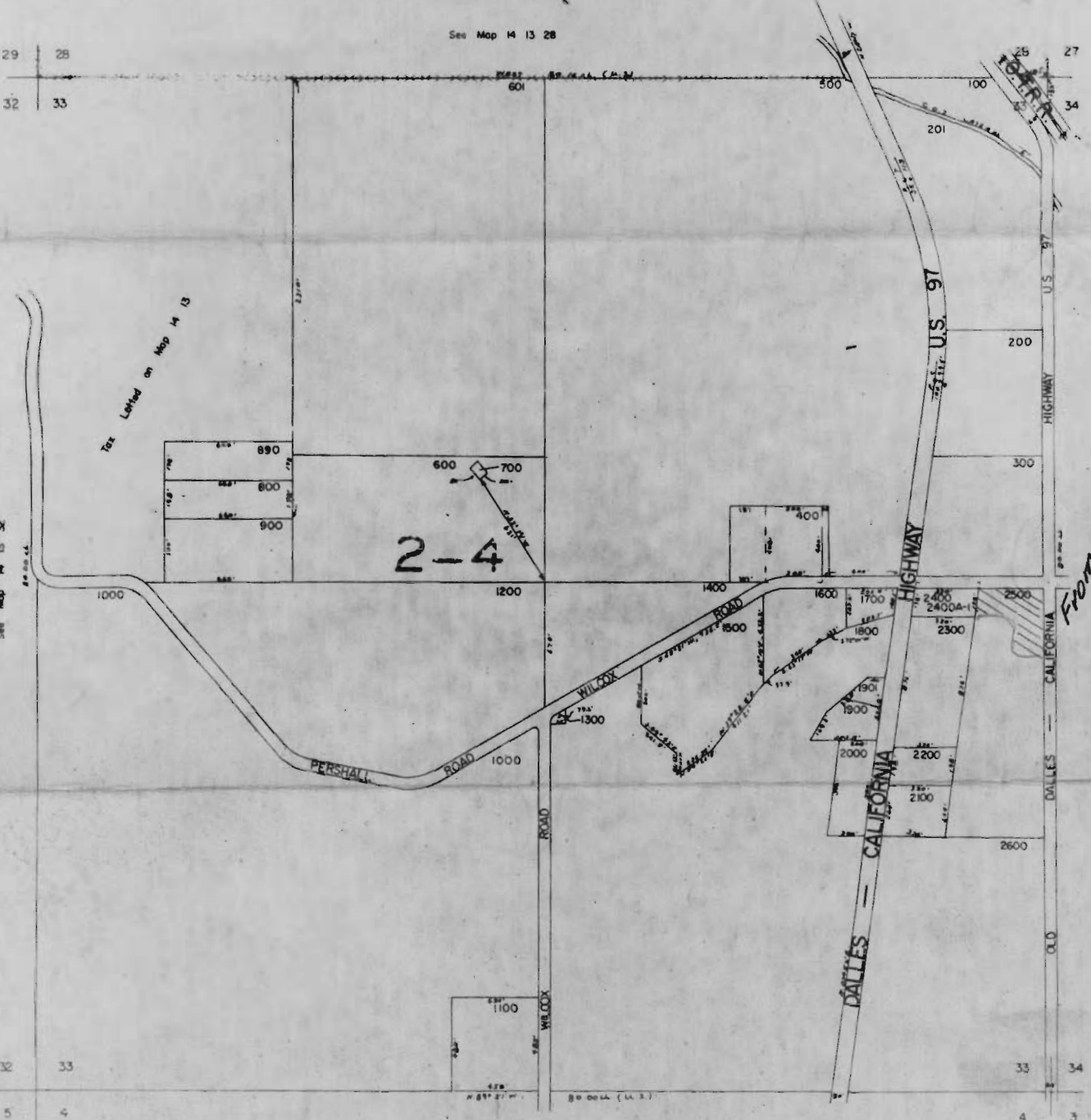
30 33

5 4

34

3

See Map 15 13 4



RECEIVED  
JUL 21 1967  
STATE ENGINEER  
SALE OREGON