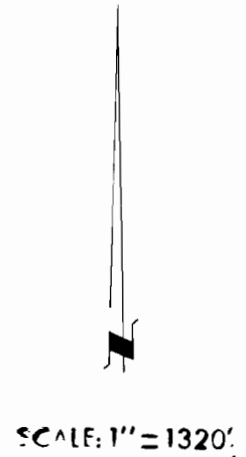
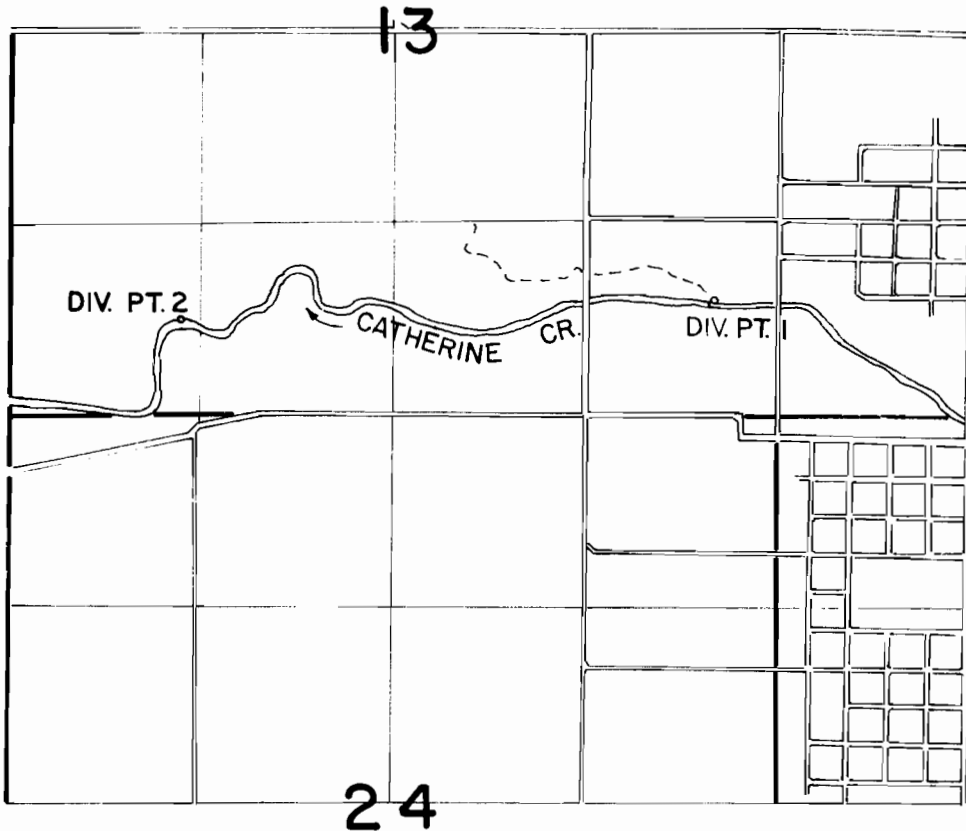


T. 4S., R. 39E., W. M.



DIV. PT. 1 LOCATED 770'N. & 2200'E. FROM S1/4 COR. SEC.13
DIV. PT. 2 LOCATED 650'N. & 1460'W. FROM S1/4 COR. SEC.13

FINAL PROOF SURVEY
UNDER

TRANSFER S-203
IN NAME OF

.....**JACK HEFNER**.....

Surveyed ..7-9..... 1984, by V.L. CHURCH.....