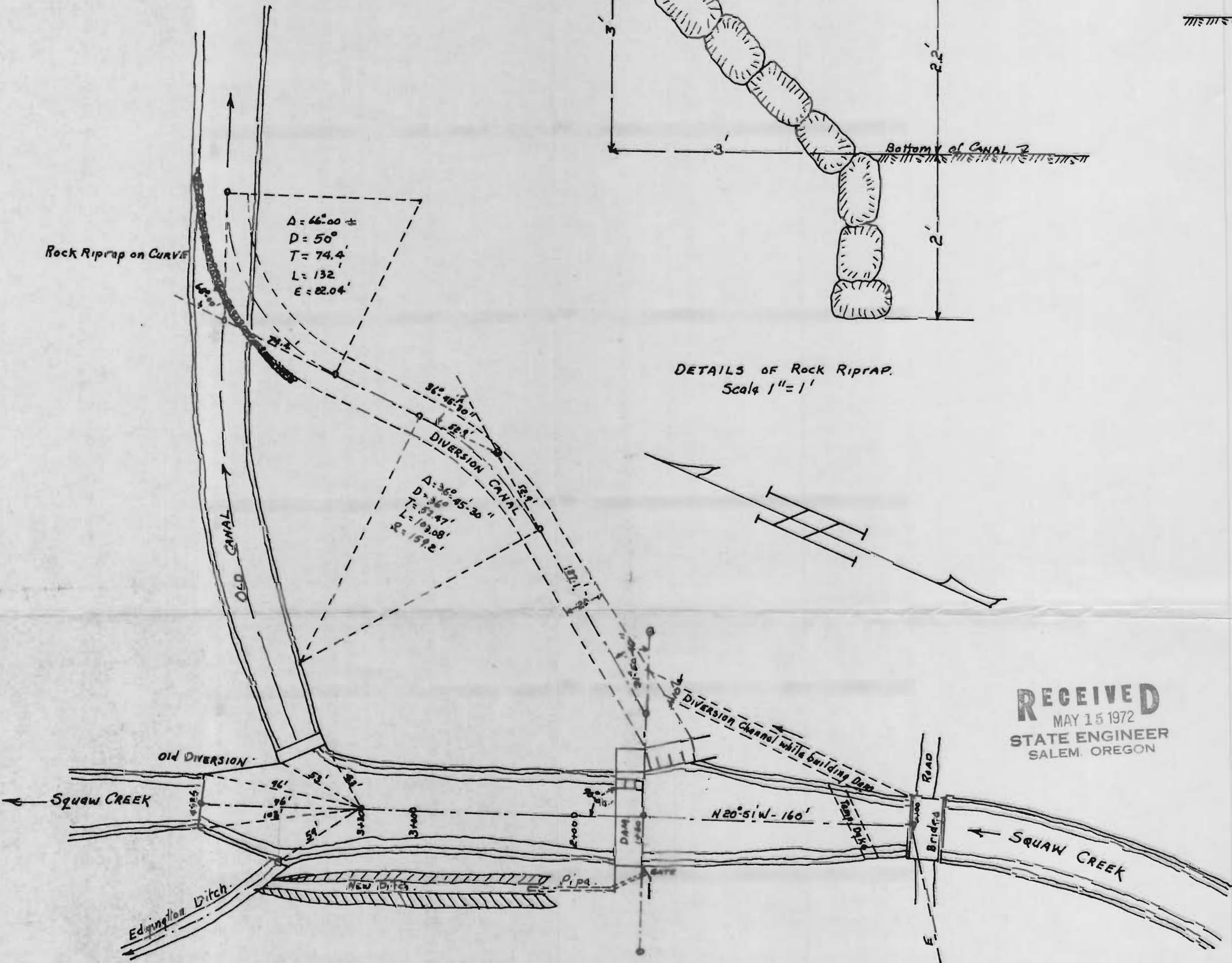
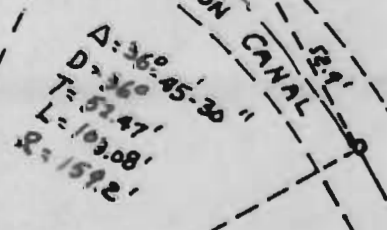
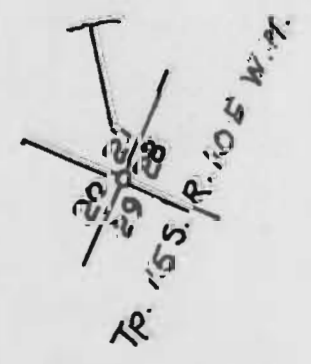


DETAILS OF Rock Riprap.
Scale 1"=1'



PLAN OF DAMSITE
Scale 1"=50'

RECEIVED
MAY 15 1972
STATE ENGINEER
SALEM, OREGON



SQUAW CREEK DIVERSION DAM
SQUAW CREEK IRRIGATION DIST.
SISTERS - OREGON.
S-102