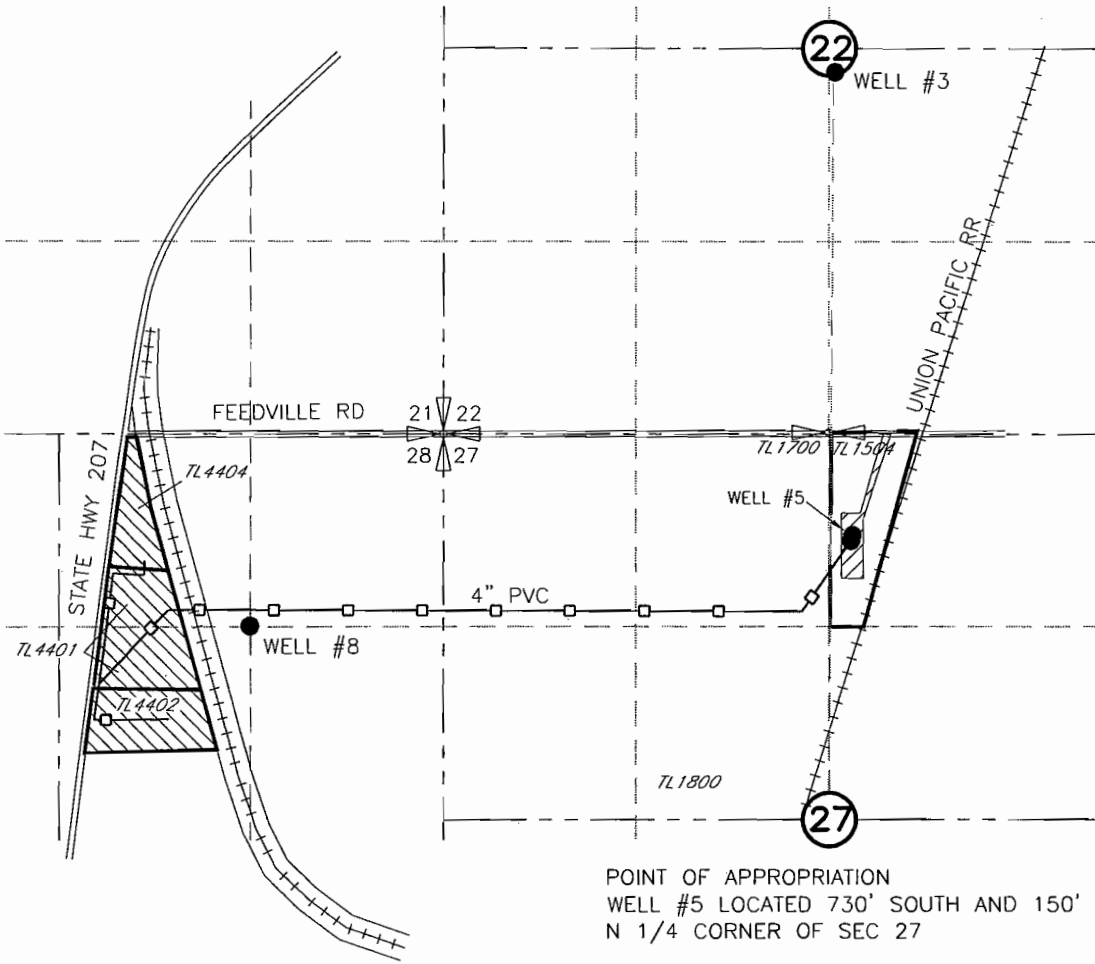




**JB LAND COMPANY
 TEMPORARY TRANSFER APPLICATION MAP
 FOR PERMIT G-4027 - T-7531
 T4N, R28E WM**



POINT OF APPROPRIATION
 WELL #5 LOCATED 730' SOUTH AND 150' EAST FROM THE
 N 1/4 CORNER OF SEC 27

FROM  TRANSFERRING 0.134cfs (60gpm) OF 0.41cfs (184gpm), INDUSTRIAL WATER RIGHTS TO 



RECEIVED

AUG 12 2003

WATER RESOURCES DEPT.
 SALEM, OREGON

SCM Consultants, Inc.
 A Tetra Tech Company 8/06/03

NOTE:
 THE PURPOSE OF THIS MAP IS TO IDENTIFY THE APPROXIMATE LOCATION
 OF THE WATER RIGHT. IT IS NOT INTENDED TO PROVIDE INFORMATION
 RELATIVE TO THE LOCATION OF PROPERTY OWNERSHIP BOUNDARY LINES.

DRAWING: H:\CAD\AG\3522\176\3522176TTR.dwg
 PRINTED BY: rogerw on 08/06/03 02:39 PM

T-951a