

CENTER SE1 SECTION 10

ORCHARD

AVENUE

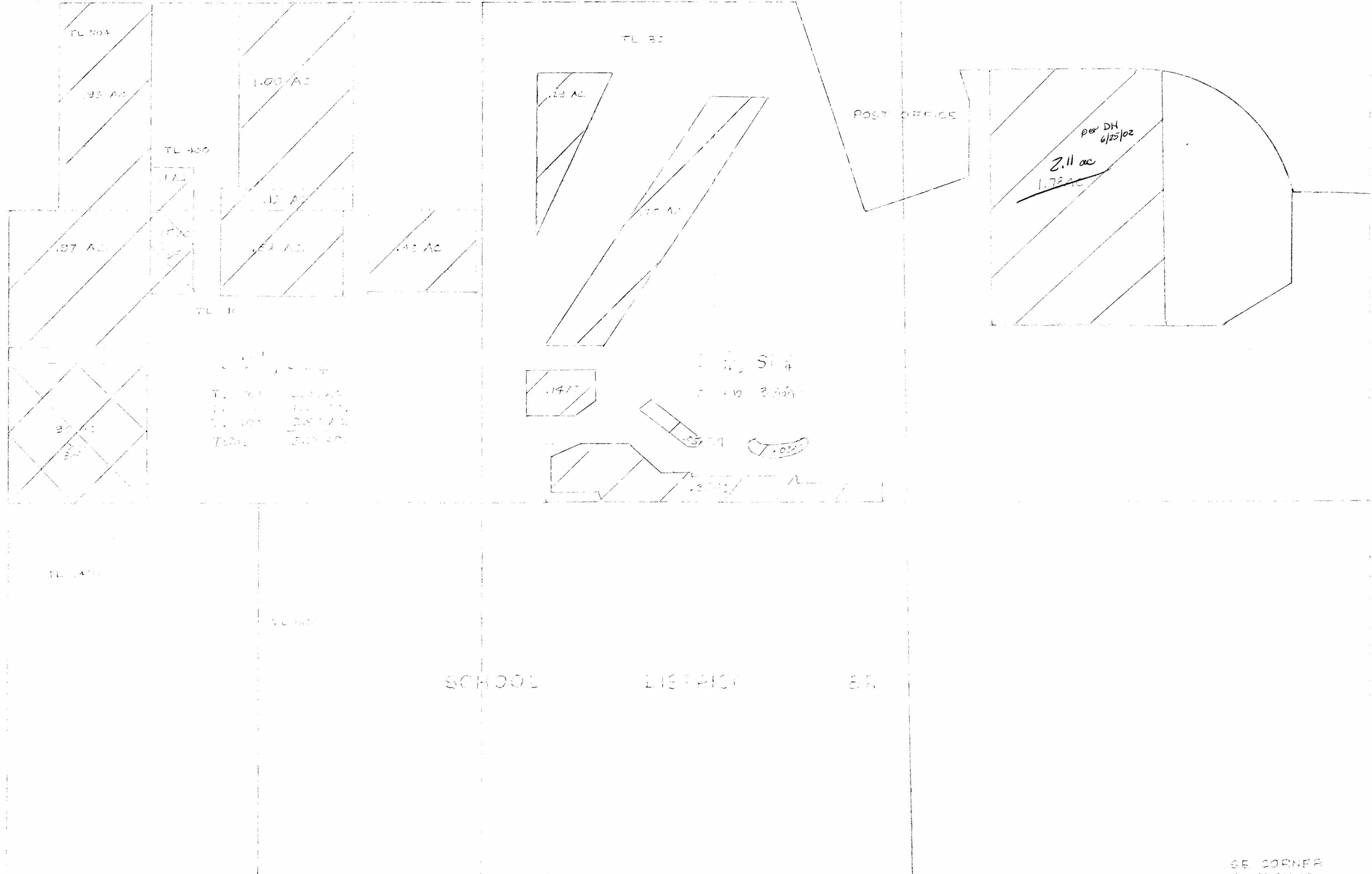
POST OFFICE

SCHOOL DISTRICT 87

HIGHWAY

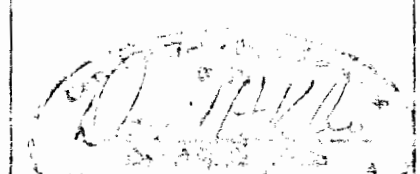
AVENUE

SE CORNER SECTION 10



KRUMBEIN ENGINEERING LTD. ENGINEERS — SURVEYORS — PLANNERS 361 S.E. Strand Portland, Oregon	Scale 1"=100'	Ch. By D.H.K.	Draw. No. 62020	Revision 1
	Date 5-26-02	Chk. By	Job No. UCS	Revision 2

IRRIGATED AREAS  
UMATILLA CO. FAIR  
HERMISTON IRR



T-8913

NOTE: PROPERTY LINES WERE DRAWN FROM INFORMATION PROVIDED BY OWNER. TITLE ORDER NO. 67/759  
IRRIGATED AREAS WERE LOCATED FROM AN AERIAL PHOTO DATED JULY 1999 AND FIELD MEASUREMENTS