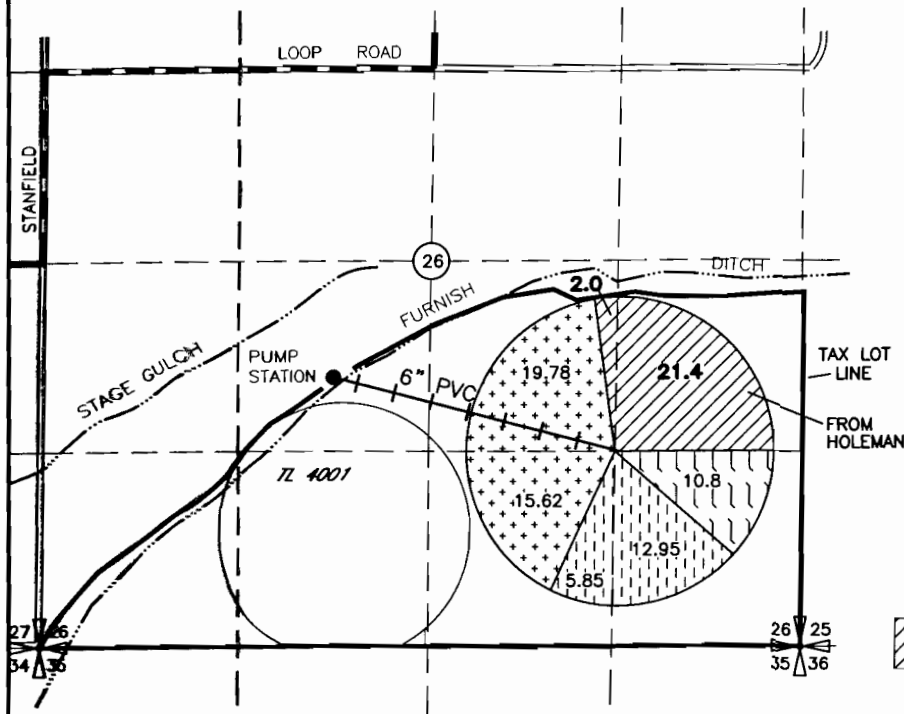
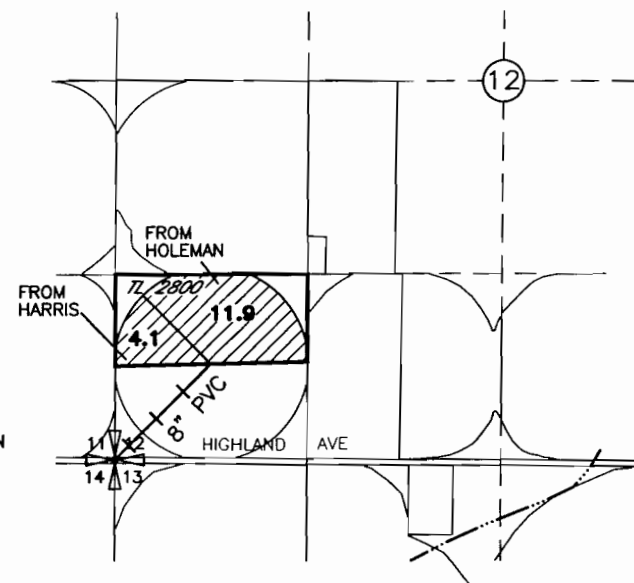



STANFIELD IRRIGATION DISTRICT  
TO SNOW AND WRIGHT  
ORS 540.580 TRANSFER APPLICATION MAP

TO SNOW  
T4N, R29E WM



TO WRIGHT  
T4N, R29E WM

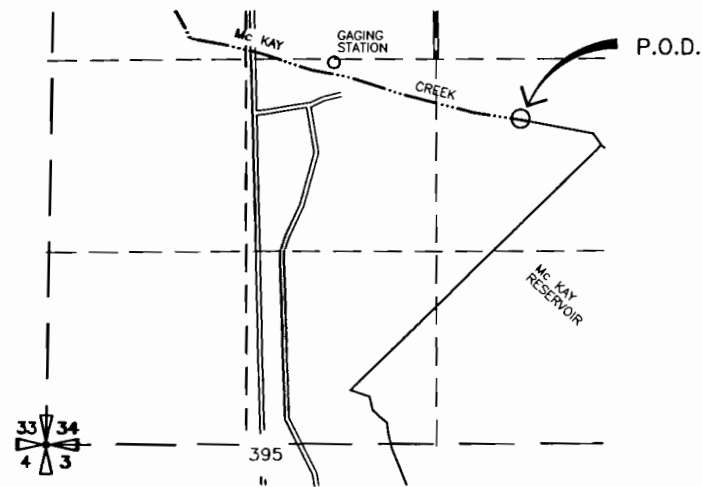


 PROPOSED UNDER THIS TRANSFER 1905  
HOLEMAN AND HARRIS

 T-7893 1965 FROM LAMBERT

T-7892 1905 FROM LAMBERT

T-7891 1905 FROM HOLEMAN




T2N, R32E WM  
P.O.D. McKAY RESERVOIR  
NW 1/4 SE 1/4 SEC 34

**NOTE:**  
THE PURPOSE OF THIS MAP IS TO IDENTIFY THE APPROXIMATE LOCATION  
OF THE WATER RIGHT. IT IS NOT INTENDED TO PROVIDE INFORMATION  
RELATIVE TO THE LOCATION OF PROPERTY OWNERSHIP BOUNDARY LINES.

0 1320 2640

SCALE IN FEET

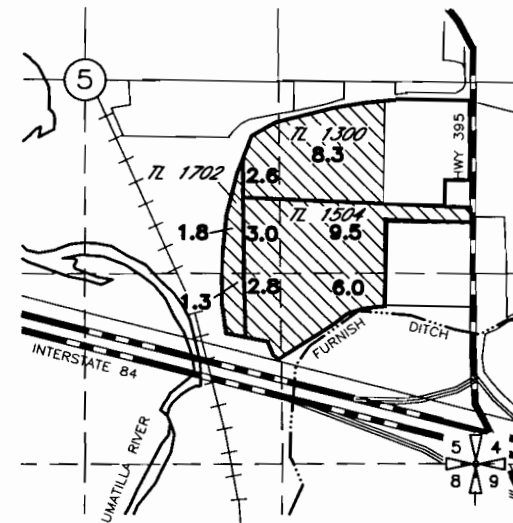
3522.141  
8/27/01  
3522THH.DWG


**Architects & Engineers**  
**Consultants, Inc.** **Kennewick, WA 99336**

STANFIELD IRRIGATION DISTRICT  
FROM HOLEMAN AND HARRIS  
ORS 540.580 TRANSFER APPLICATION MAP

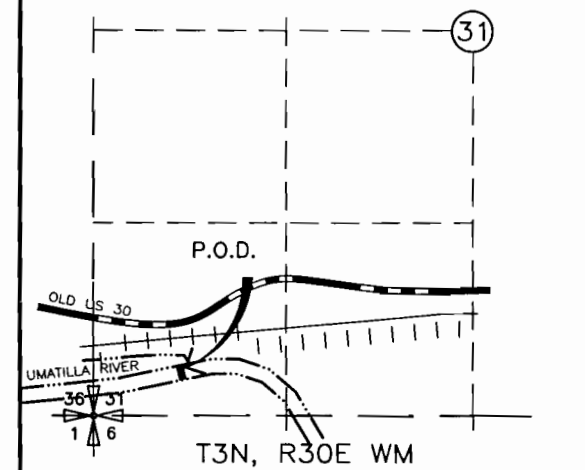
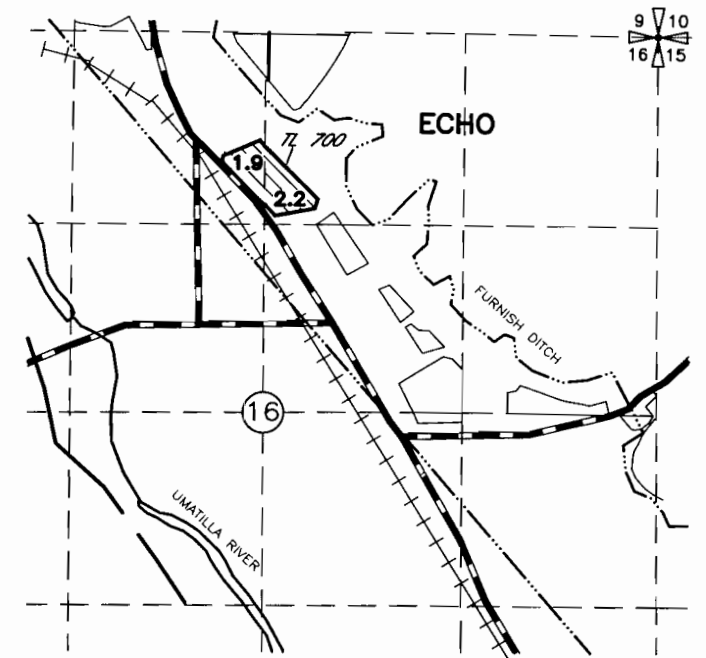
T-8898

FROM HOLEMAN  
T3N, R29E WM



 AREA TRANSFERED FROM

FROM HARRIS  
T3N, R29E WM



P.O.D. FURNISH DITCH  
LOCATED 430' NORTH AND 450' EAST  
FROM THE SW CORNER SEC 31

NOTE:  
THE PURPOSE OF THIS MAP IS TO IDENTIFY THE APPROXIMATE LOCATION  
OF THE WATER RIGHT. IT IS NOT INTENDED TO PROVIDE INFORMATION  
RELATIVE TO THE LOCATION OF PROPERTY OWNERSHIP BOUNDARY LINES.

RECEIVED

OCT 01 2001

WATER RESOURCES DEPT.  
SALEM, OREGON

522.141  
3/27/01  
522THH.DWG

**SCM** Architects & Engineers  
Consultants, Inc. Kennewick, WA 99336