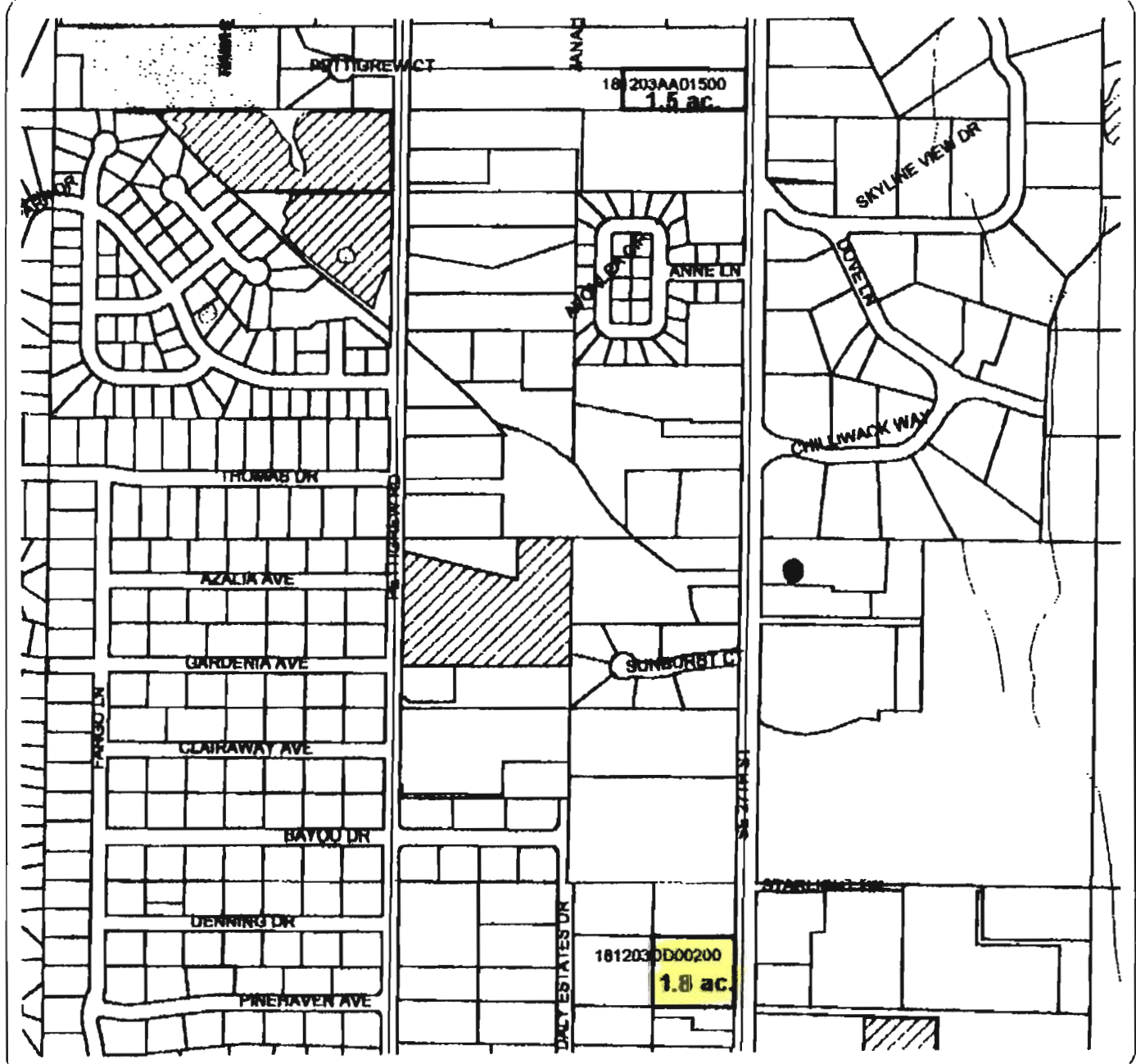




# WATER RIGHTS MAP

**18-12-03**  
**NENE, SESE**  
**TL: 1500, 200**



**NOTICE**  
 THIS IS NOT A CERTIFICATION OF  
 WATER RIGHTS NOR DOES THIS  
 WARRANT THE SAME BUT SERVES  
 ONLY TO PROVIDE INFORMATION  
 AVAILABLE AT THIS OFFICE AS OF  
 THIS DATE  
 DATE 08-27-03  
 BY LNL



**RECEIVED**  
 SEP 22 2003  
 WATER RESOURCES DEPT  
 SALEM, OREGON

**Legend**





- IRRIGATED
- INTAKE
- CANALS
- LATERALS
- ROADS
- PERTINENT OWN

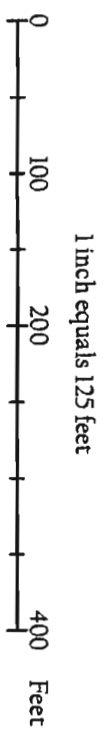
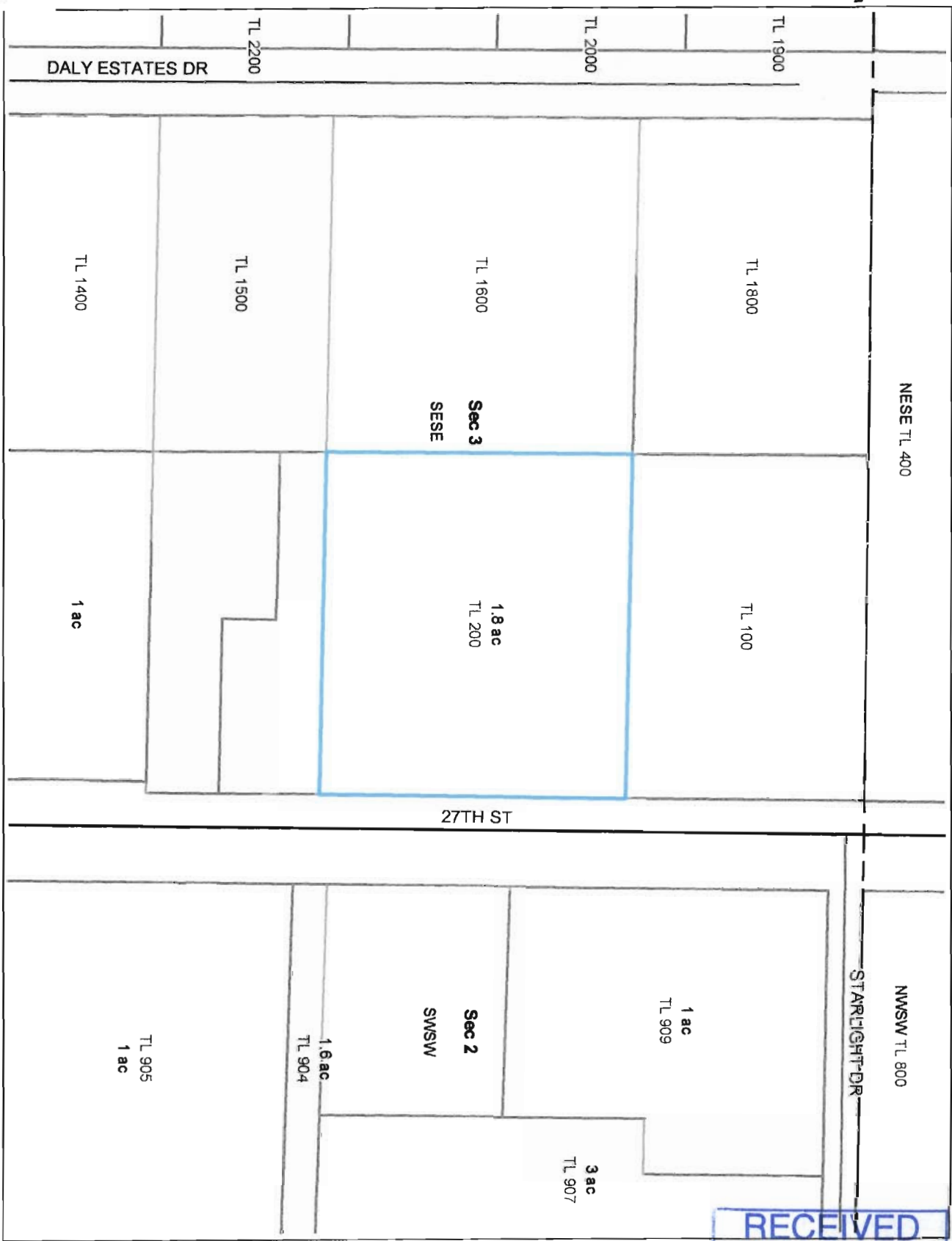
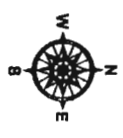
N

T 9553

Central Oregon Irrigation District Water Right: T.18 R.12 Sec 3 Tax lot 200

**Legend**

-  Irrigated Area
-  Sections
-  Qtr Qtr
-  Tax lots



**RECEIVED**  
 SEP 22 2003  
 WATER RESOURCES DEPT  
 SALEM, OREGON

79553

This product is for informational purposes and may not have been prepared for, or be suitable for, legal, engineering, or surveying purposes. Users of this information should review or consult the primary data and information sources to ascertain the usability of the information.