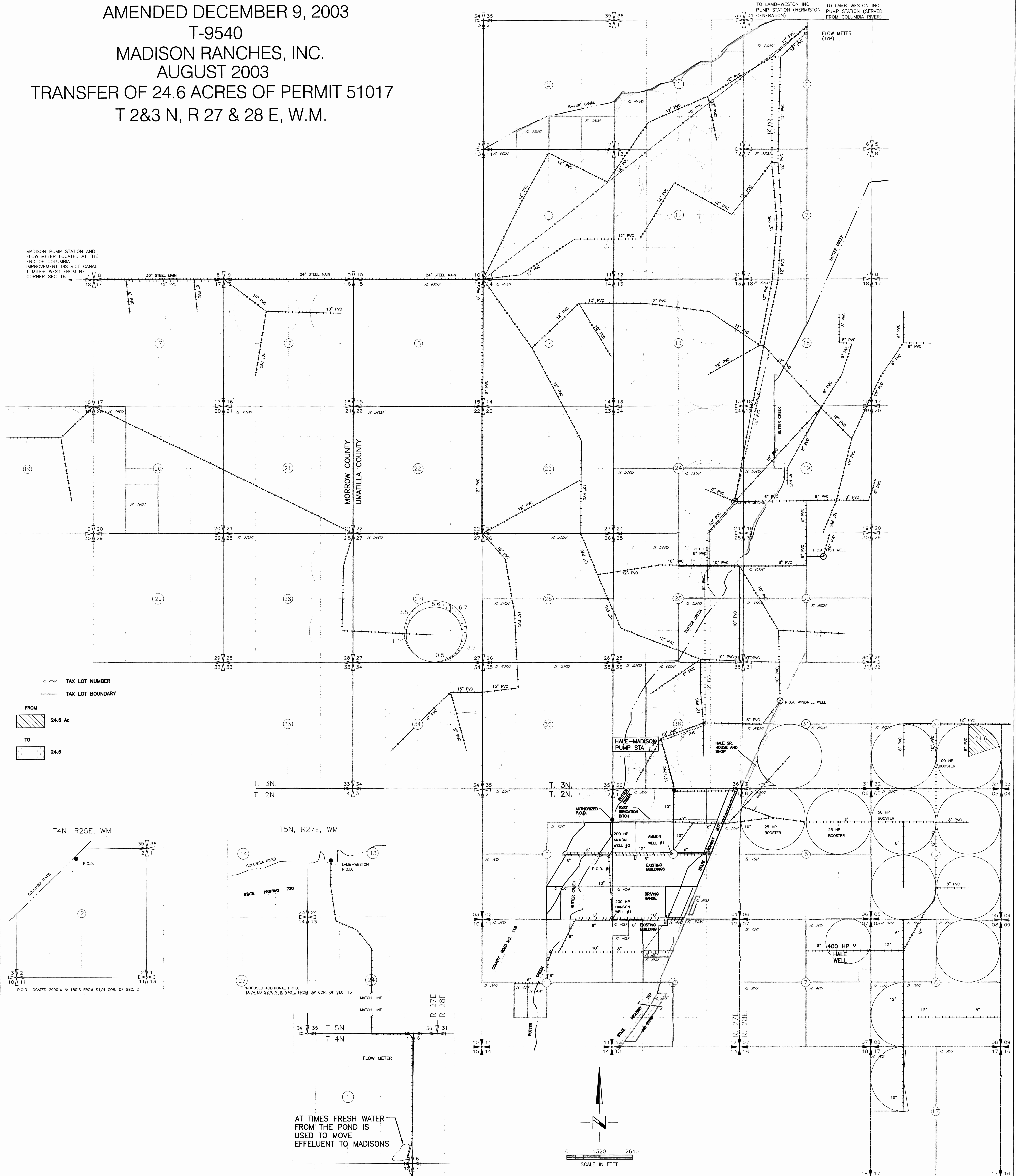


AMENDED DECEMBER 9, 2003
 T-9540
 MADISON RANCHES, INC.
 AUGUST 2003
 TRANSFER OF 24.6 ACRES OF PERMIT 51017
 T 2&3 N, R 27 & 28 E, W.M.

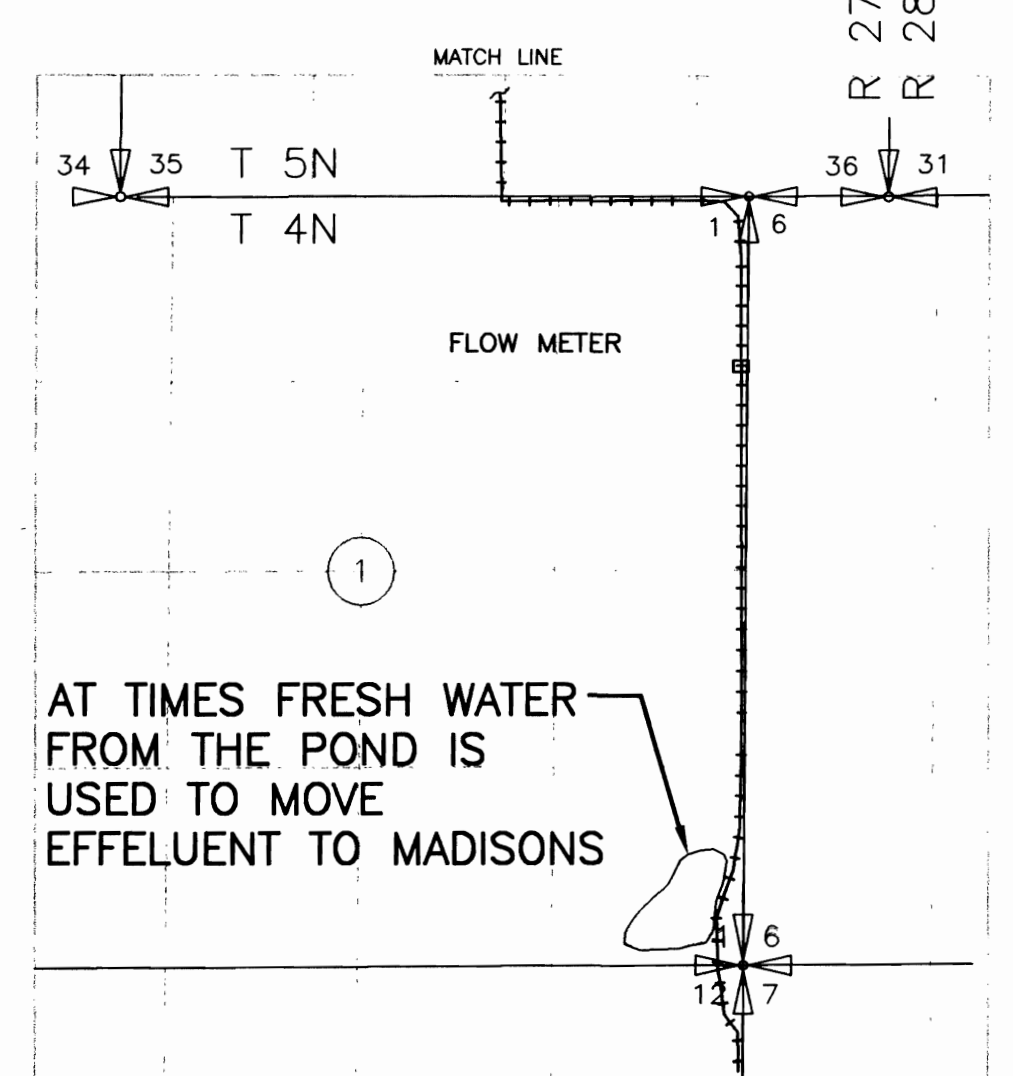
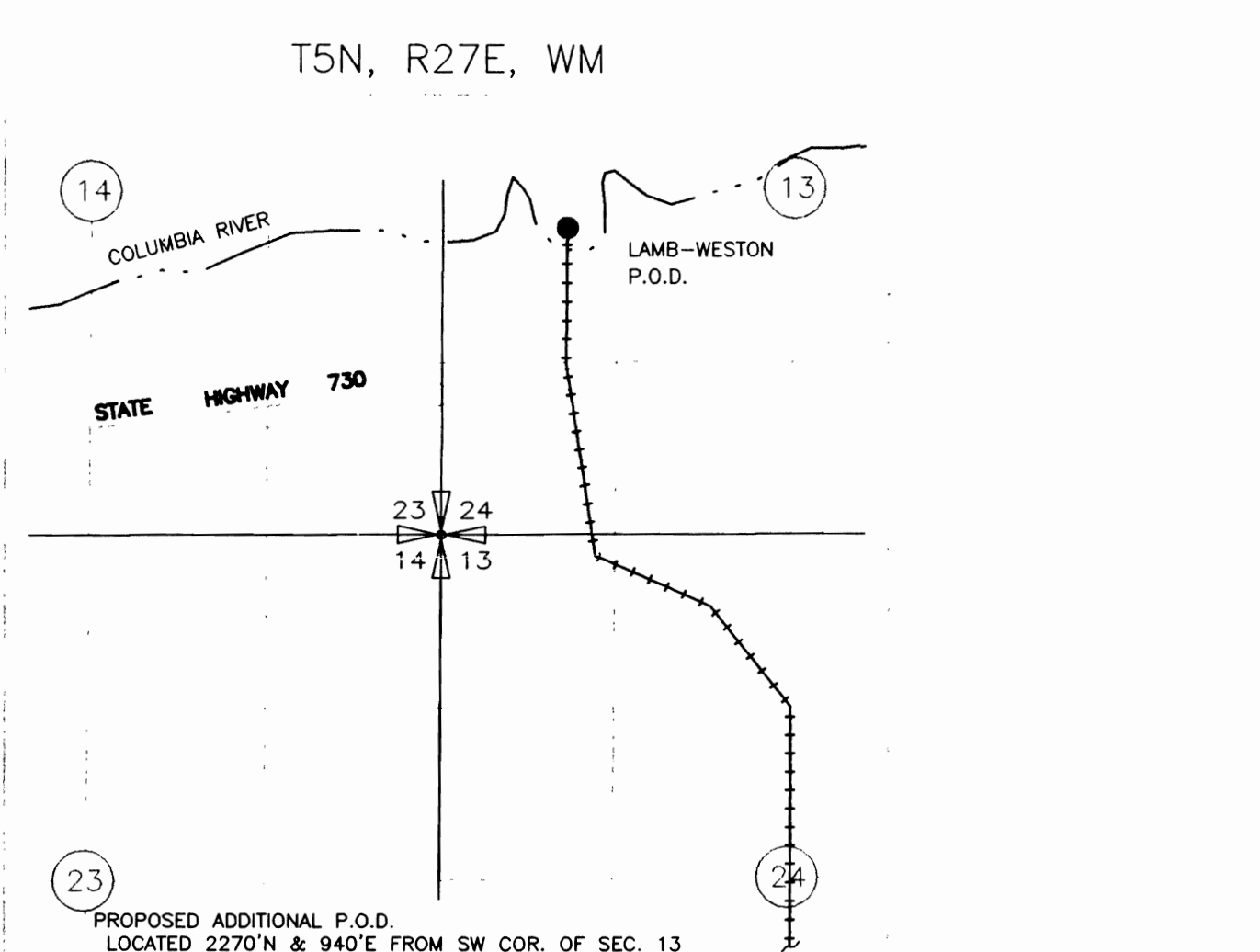
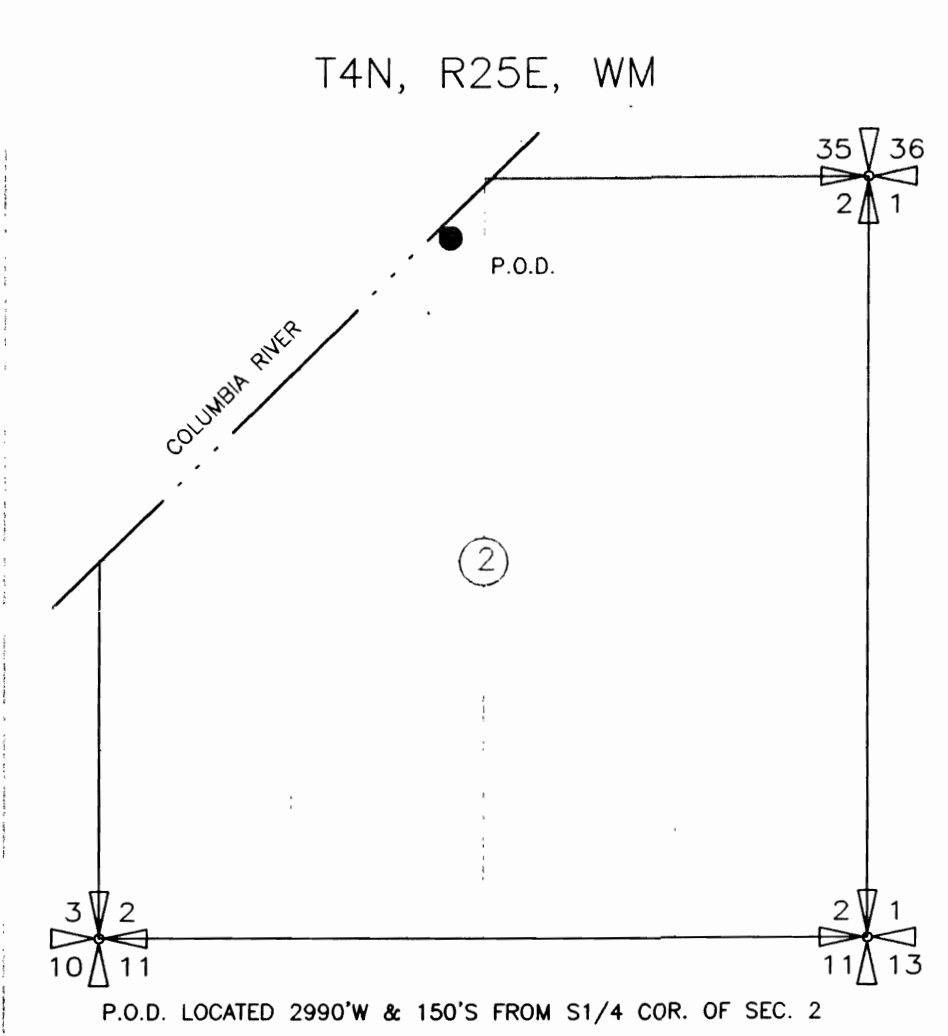


MADISON PUMP STATION AND FLOW METER LOCATED AT THE END OF COLUMBIA IMPROVEMENT DISTRICT CANAL 1 MILE WEST FROM NE CORNER SEC 18

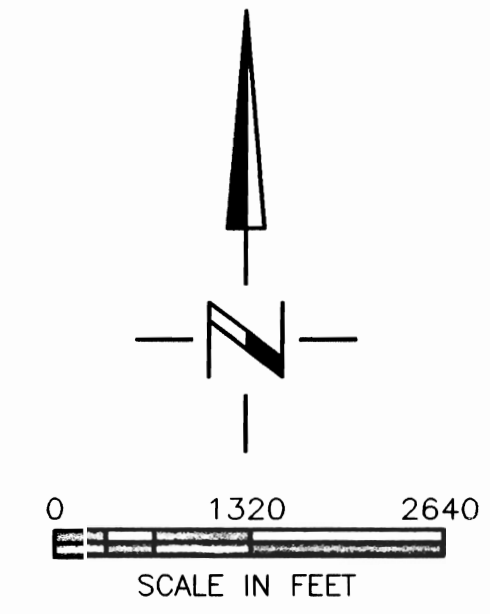
11,800 TAX LOT NUMBER
 --- TAX LOT BOUNDARY

FROM
 24.6 Ac

TO
 24.6



TO LAMB-WESTON PLANT AND MADISON FARM



NOTE:
 THE PURPOSE OF THIS MAP IS TO IDENTIFY THE APPROXIMATE LOCATION OF THE WATER RIGHT. IT IS NOT INTENDED TO PROVIDE INFORMATION RELATIVE TO THE LOCATION OF PROPERTY OWNERSHIP BOUNDARY LINES.